

COPY

FILED 2003 - 0740  
RECORDER'S OFFICE  
CHICKASAW COUNTY, IOWA

2003 MAR 12 AM 9 09

CINDY MESSERSMITH  
COUNTY RECORDER

TEKIPPE ENGINEERING, P.C., 128 South Vine Street, West Union, Iowa 52176 Phone (563) 422-5131

UNITED STATES PUBLIC LAND SURVEY CORNER CERTIFICATE

OF  
Land Survey Monuments situated in Section 3 4, Township 96 North, Range  
13 West of the Fifth Principal Meridian, CHICKASAW County, Iowa.  
Previously recorded in none in County Recorder's Office.  
(book, page, document number, etc.)

(Show reason for preparing this certificate, the evidence and detailed procedures used in establishing the corner positions and monumentation found or placed.)

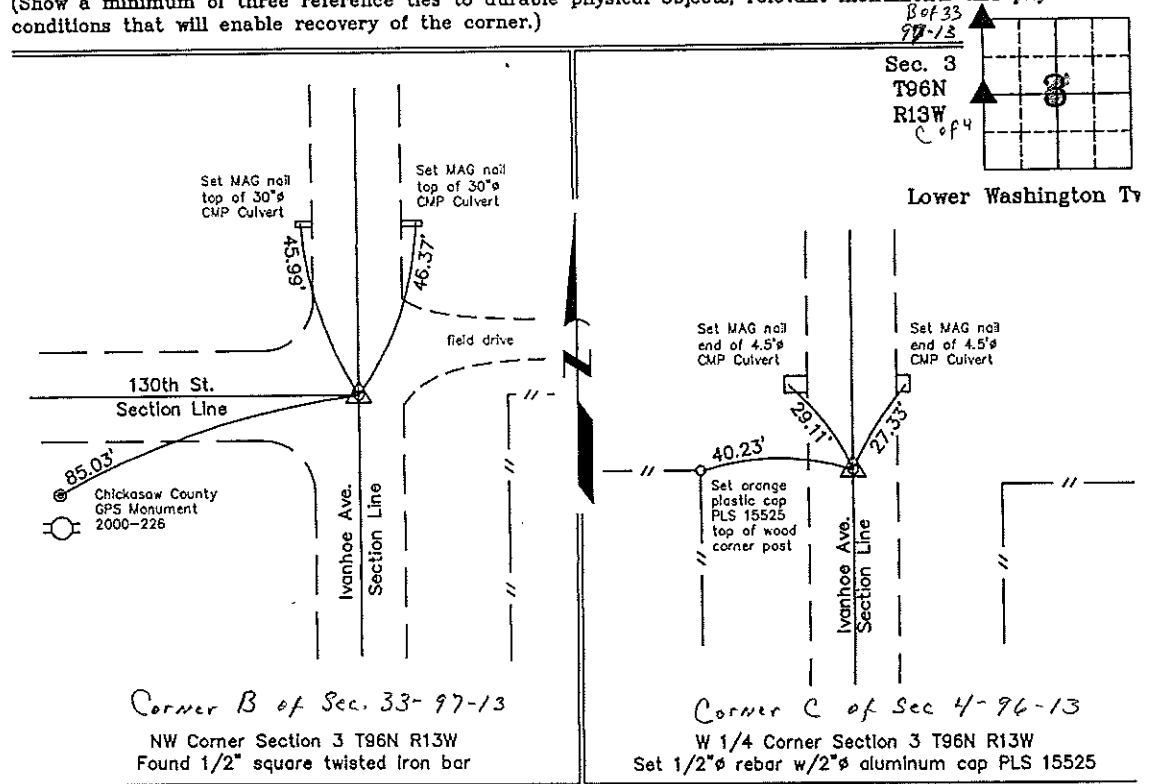
Monument Description and Remarks: NW Corner Section 3 T96N R13W: Found 1/2" square twisted iron bar with information obtained from a Survey and Plat made by Thomas C. Craft recorded in the Chickasaw County Recorder's Office December 15, 1980 in Deeds Book 123, Page 117.

W 1/4 Corner Section 3 T96N R13W: Set 1/2"Ø rebar w/2"Ø aluminum cap PLS 15525 40.00' West of R.O.W. on line with 1/4 Section Line fence to the West as indicated in the Chickasaw County Engineer's Office in Field Book Washington Twp. Corner Ties, Section 4, Corner 'C'.

PLAN - VIEW

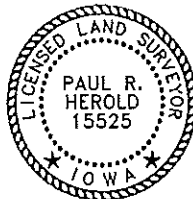
(Show a minimum of three reference ties to durable physical objects, relevant monuments and physical conditions that will enable recovery of the corner.)

Project Number 03016.LS  
FB. 46J PG. 62-65



Corner B of Sec. 33-97-13  
NW Corner Section 3 T96N R13W  
Found 1/2" square twisted iron bar

Corner C of Sec 4-96-13  
W 1/4 Corner Section 3 T96N R13W  
Set 1/2"Ø rebar w/2"Ø aluminum cap PLS 15525



I hereby certify that this land surveying document was prepared and the related survey work was performed by me or under my direct personal supervision and that I am a duly licensed Land Surveyor under the laws of the State of Iowa.

Paul R. Herold 3-10-03  
Paul R. Herold Date

License number 15525  
My license renewal date is December 31, 2004.  
Sheets covered by this seal: Individual

List Corners to be Indexed			
Corners	Section	Twp.	Range
NW	3	96N	13W
W 1/4	3	96N	13W

Filed 3-12-03

X:\Section Corners\Sec. 0313-96-13ak.dwg

County Engineer's  
Copy

Section 4-96-13  
Is referred to in  
Engn. The Book