

Herold - Reicks Surveying, 10 East Main Street, New Hampton, IA 50659, Ph. 64-394-2725, Fax. 64-394-2718

**UNITED STATES PUBLIC LAND SURVEY CORNER CERTIFICATE**

33

Land Survey Monuments situated in Section 4, Township 96 North, Range 13 West of the Fifth Principal Meridian, Chickasaw County, Iowa. Not previously recorded in the County Recorder's office.

This certificate is being prepared in compliance with Iowa Code Chapter 355.11 because:

- There is no certificates on file for these corners.
- There are no longer three valid ties of record.
- There are changes to reference ties of record.
- There is change of monumentation of record.
- To clarify description of record monument (ties).

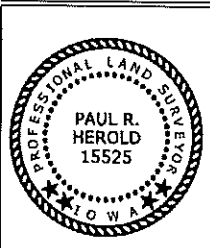
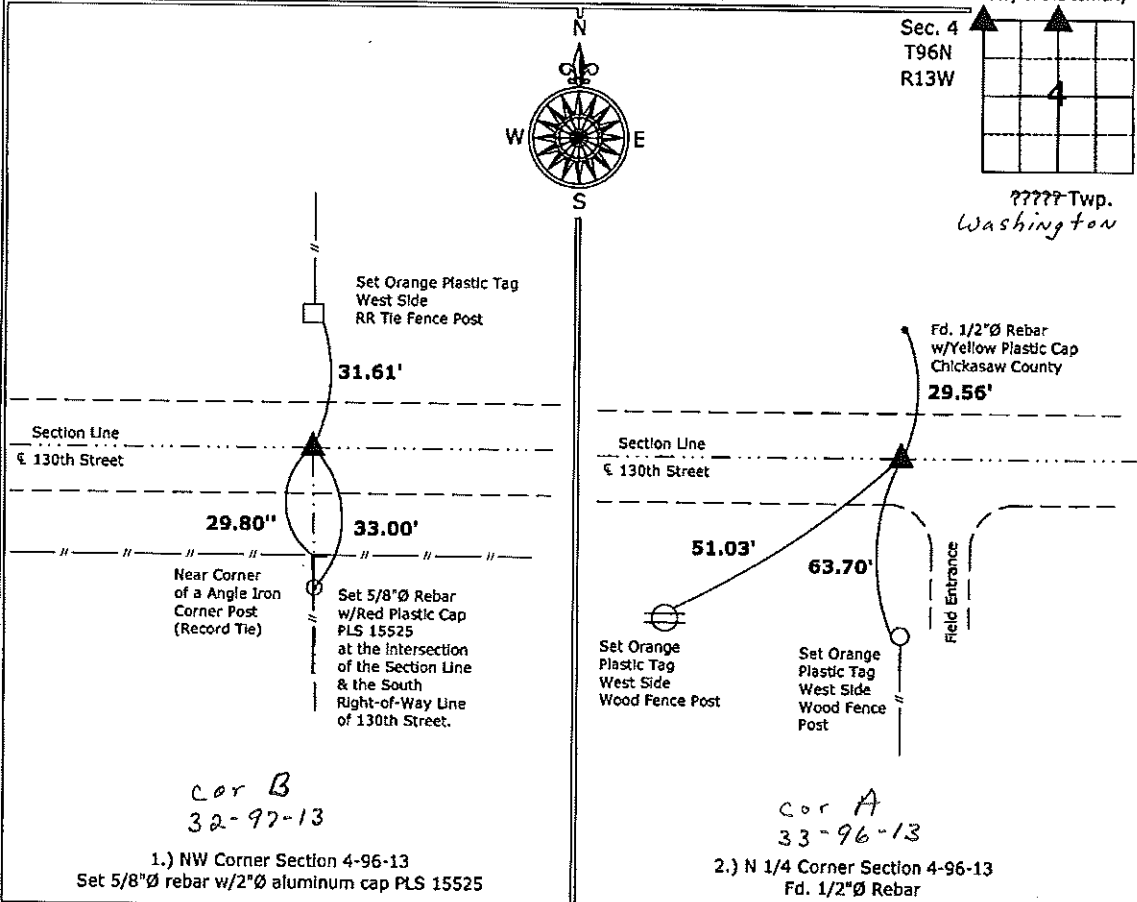
Monument Description and Remarks:

**NW Corner:** Set 5/8"Ø rebar w/2"Ø Alum. Cap. PLS 15525 from single remaining tie 29.80' North of the top of the angle iron corner post on the extension of the North-South fence, as shown in the field notes obtained from the County Engineer's Office, in Field Book Upper Washington Twp Corner Ties, Section 32, Corner "B".

**N 1/4 Corner:** Fd. 1/2"Ø Rebar from ties obtained from the County Engineer's Office, in Field Book Upper Washington Twp Corner Ties, Section 33, Corner "A".

**PLAN - VIEW**

(Show a minimum of three reference ties to durable physical objects, relevant monuments and physical conditions that will enable recovery of the corner.)



I hereby certify that this land surveying document was prepared and the related survey work was performed by me or under my direct personal supervision and that I am a duly licensed Land Surveyor under the laws of the State of Iowa.

*Paul R. Herold* 10-6-10  
 Paul R. Herold Date:  
 License number 15525  
 My license renewal date is December 31, 2010.  
 Sheets covered by this seal: Individual sheet only

List Corners to be Indexed			
Corners	Section	Twp.	Range
NW	4	96	13
N 1/4	4	96	13

Project Number: 2010-083  
 FB: Chickasaw County 3, Pgs. 49-50