

Instrument #: 2022-1887  
 10/14/2022 03:34:21 PM Total Pages: 1  
 SCC SECTION CORNER CERTIFICATES  
 Recording Fee: \$ 7.00  
 Shirley Troyna, Recorder, Chickasaw County Iowa



Prepared by: Kyle A. Johnson Address: 1900 MEDICAL ARTS AVE S, SUITE 100 SARTELL, MN Phone: 1-888-937-5150

UNITED STATES PUBLIC LAND SURVEY CORNER CERTIFICATE FOR

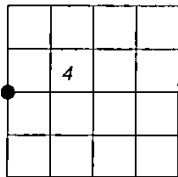
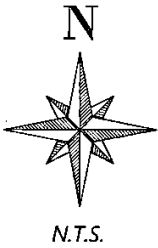
Land survey monuments situated in Section 4, Township 96 NORTH  
13 WEST, of the Fifth Principal Meridian, CHICKASAW County, Iowa.  
 Previously Recorded in \_\_\_\_\_ in County Recorder's Office.

(Show reason for preparing this certificate, the evidence and detailed procedures used in establishing the corner positions and monumentation found or placed.)

MONUMENT DESCRIPTION AND REMARKS:

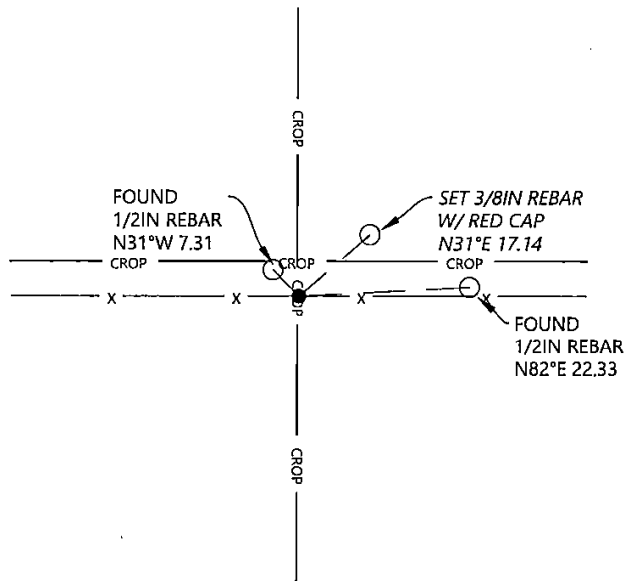
**WEST QUARTER:** Westwood Professional Services found a 5/8" rebar with aluminum cap LS15525 on south side of a 9x5 stone and 2 ties from 2010 record. Accepting corner location and set 1 tie. Filing corner record as there are no longer 3 valid ties of record.  
**PLAN - VIEW**

(Show a minimum of three reference ties to durable physical objects, relevant monuments and physical conditions that will enable recovery of the corner.)



Cor. C 5-96-13

WEST QUARTER



I hereby certify that this land surveying document was prepared and the related survey work was performed by me or under my direct personal supervision and that I am a duly licensed Land Surveyor under the laws of the state of Iowa.

Kyle Johnson 10/14/2022  
 Signature Date  
 Typed/Printed Name: Kyle A. Johnson  
 License Number: 25725  
 My license renewal date is December 31, 2022  
 Pages or sheets covered by this seal: THIS SHEET

Corners to be Indexed

Corners	Section	Twp.	Range
WQ	4	96	13