

Instrument #: 2020-0024
 01/07/2020 09:30:16 AM Total Pages: 1
 SCC SECTION CORNER CERTIFICATES
 Recording Fee: \$ 7.00
 Shirley Troyna, Recorder, Chickasaw County Iowa

Prepared by & Return to: Herold - Reicks Surveying, 10 East Main Street, New Hampton, IA 50659, Ph. 641-994-2725

United States Public Land Survey Corner Certificate

Land Survey Monument situated in
 Section 5, Township 96 North, Range 13 West of the Fifth Principal Meridian, Chickasaw County, Iowa.
 On file in Book 150, Page 374 in the County Recorder's office.

This certificate is being prepared in compliance with Iowa Code Chapter 355.11 because:

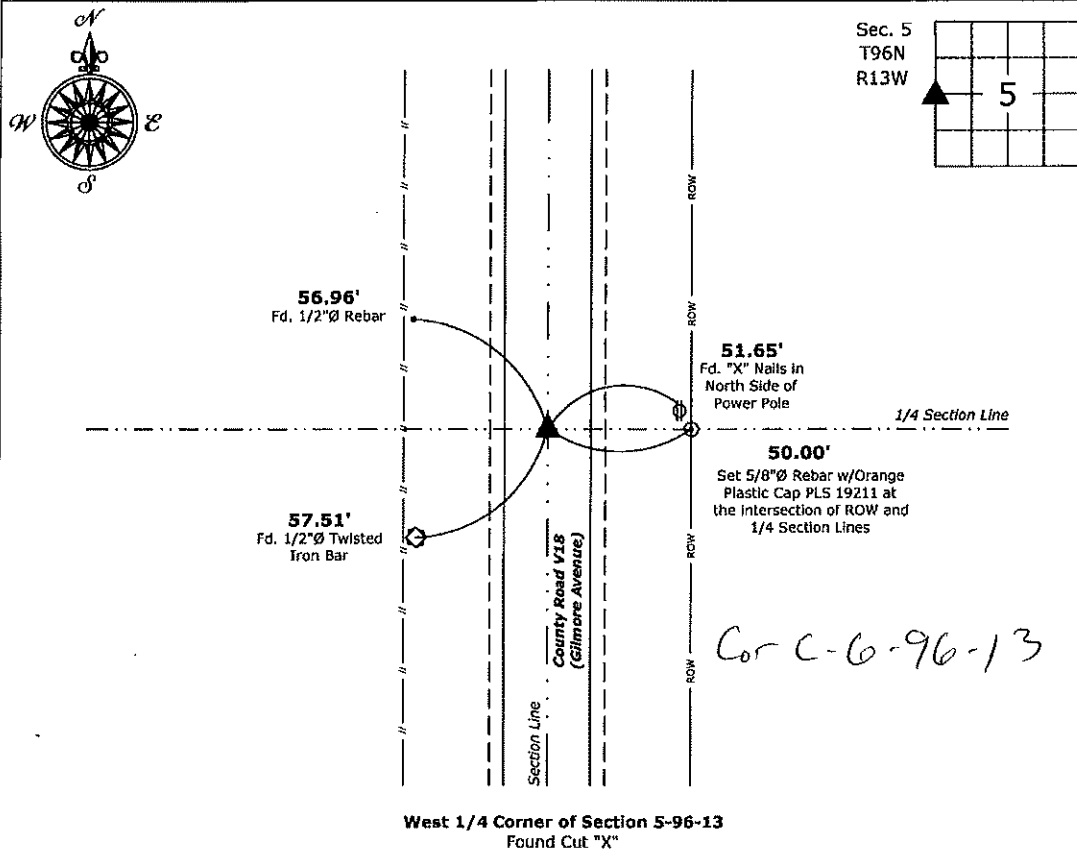
- There is no certificate on file for this corner.
- There are no longer three valid ties of record.
- There are changes to reference ties of record.
- There is change of monumentation of record.
- To clarify description of record monument (ties).

Monument Description and Remarks:

West 1/4 Corner: Found Cut "X" with information obtained from the previously recorded Section Corner Certificate.

Plan View

(Show a minimum of three reference ties to durable physical objects, relevant monuments and physical conditions that will enable recovery of the corner.)



I hereby certify that this land surveying document was prepared and the related survey work was performed by me or under my direct personal supervision and that I am a duly licensed Land Surveyor under the laws of the State of Iowa.

Kirk D. Reicks 1-6-20
 Kirk D. Reicks Date:
 License number 19211
 My license renewal date is December 31, 2020.
 Sheets covered by this seal: Individual sheet only

List Corner to be Indexed			
Corner	Section	Twp.	Range
W 1/4	5	96	13

Project Number: 2019-029
 FB: Chickasaw 9, Pgs. 34-35

File: S:_Projects - NHO\County Control Systems - NHO\CHICKAW\CHICK-11.WD\CHICK-11.dwg, 1/6/2020 8:08:31 AM

UNITED STATES PUBLIC LAND SURVEY CORNER CERTIFICATE

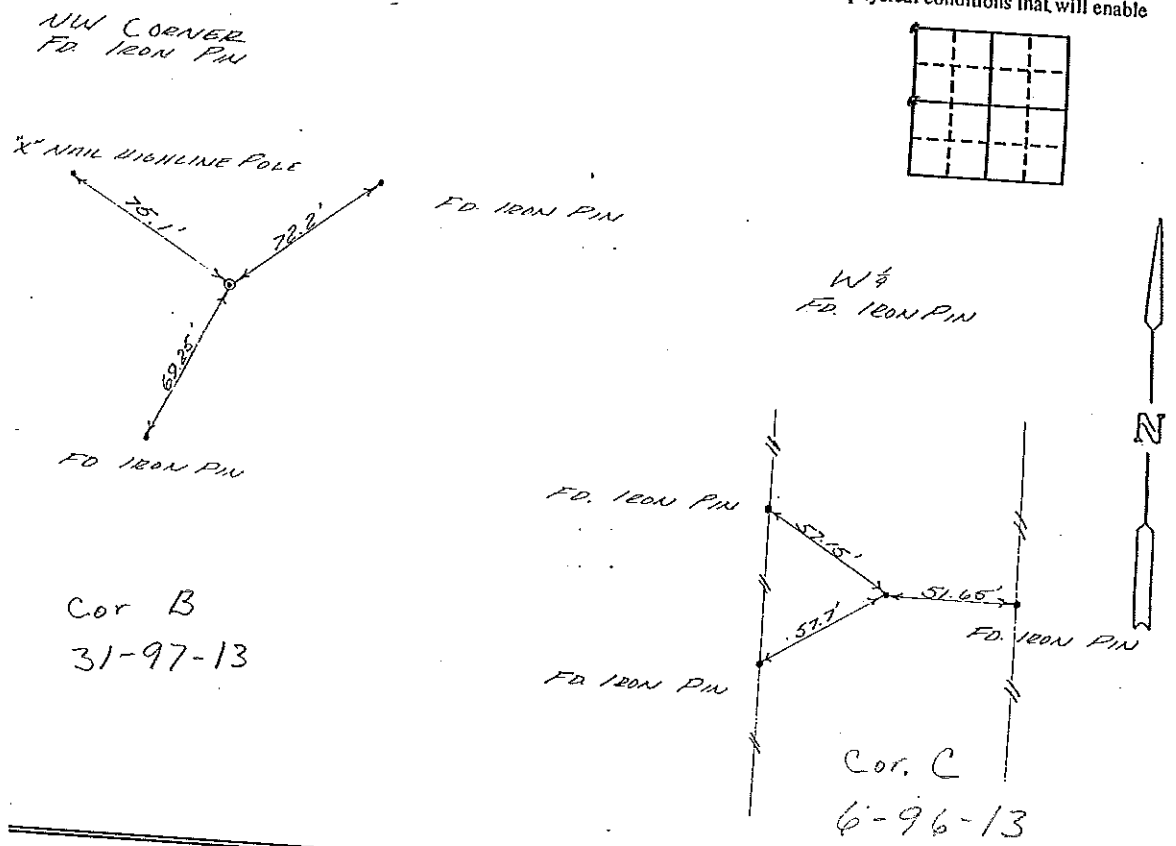
OF Land Survey Monuments situated in Section 13, of the Fifth Principal Meridian, 56 Township 96, Range 13, County, Iowa. Previously recorded in _____ in County Recorder's Office.

(Show reason for preparing this certificate, the evidence and detailed procedures used in establishing the corner positions and monumentation found or placed.)
 Monument Description and Remarks: _____

Section 6-96-13
 As referred to in
 Engle Tie Book

PLAN - VIEW

(Show a minimum of three reference ties to durable physical objects, relevant monuments and physical conditions that will enable recovery of the corner.)



I hereby certify that the survey work was completed and this certificate was prepared by me or under my direct personal supervision and that I am a duly registered land surveyor under the laws of the state of Iowa.
 Signature: L.P. Erdman
 Name typed or printed: L.P. ERDMAN
 Date: 11-02-92 Reg. No. 2886

Corners	List Corners to be Indexed Section	Twp	Range
NW	5	96	13
W 1/4	5	96	13

Placed in tie Book
 11/2/92

