

Prepared by: Erdman Engineering P.C. 708 Commerce Drive, P.O. Box 246, Decorah Iowa, 52101  
 Phone (319)382-4194, Fax (319)382-3623

## United States Public Land Survey Corner Certificate of

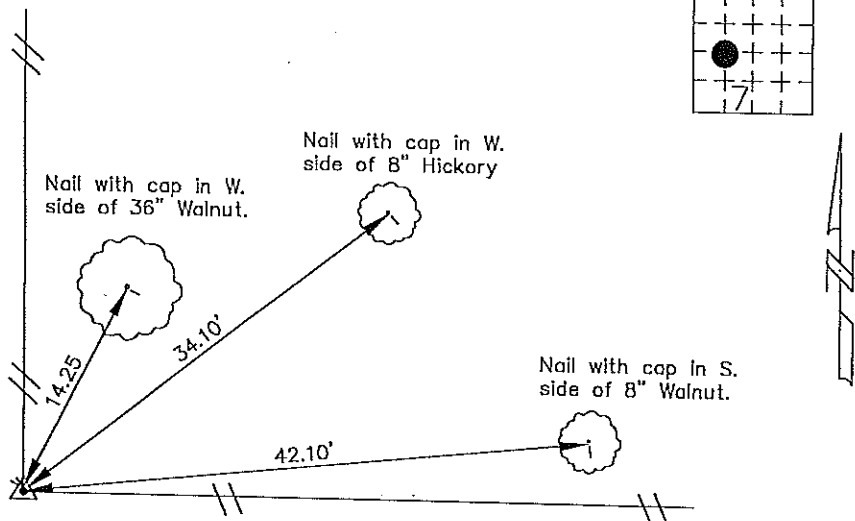
Land Survey Monuments situated in Section 7 Township 96 Range 13 of the Fifth Principle Meridian, Chickasaw County, Iowa. Previously recorded in does not apply in County Recorders Office.

(Show reason for preparing this certificate, the evidence and detailed procedures used in establishing the corner positions and monumentation found or placed.)

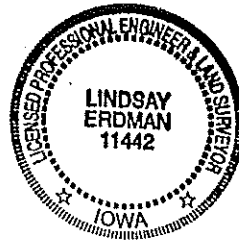
Monument Description and Remarks: This certificate is prepared in accordance with Section 355.11 of the 1995 Code of Iowa. No previous certificate has been filed for this corner location. We did not find any record of the W 1/8 corner being set or tied out previously. We did not find any evidence of the W 1/8 corner other than the fence lines shown. Record dimensions along the center Section line were not found. Based on the irregular division along the north line of the NW 1/4 (Auditors dimension of 15.30ch. for the "W 1/2" and the measured remainder of the "E 1/2" of the NW 1/4 at 1451.00' along the north line) we found the existing fences to reasonably match these dimensions along the center section line. We thus accepted the fence corner as the best location of the W 1/8 Corner of Section 7-96-13.

### Plan-View

(Show a minimum of three reference ties to durable physical objects, relevant monuments and physical conditions that will enable recovery of the corner.)



Cor. I



I hereby certify that the survey work was completed and this certificate was prepared by me or under my direct supervision and that I am a duly registered land surveyor under the laws of the State of Iowa.

Signature Lindsay Erdman  
 Lindsay Erdman, P.E. and L.S.

Date: 3/24/97 Reg. No. 11442

My license renewal date is December 31, 1998

List Corners to be Indexed			
Corners	Section	Twp.	Range
W 1/8	7	96	13