

XX  
1  
C  
M  
S

02055

DOCUMENT No. 02055 FILED FOR RECORD THE 10th DAY OF STATE OF IOWA, CHICKASAW COUNTY.  
RECORDING FEE \$ 6.00 April 9, 1997 AT 8:30  
By: Leitha N. Ross, Recorder  
TRANSFER FEE \$ 0.00 O'CLOCK A.M. 1001.64 Deeds PAGE 14  
Leitha N. Ross, Deputy

Prepared by: Erdman Engineering P.C. 708 Commerce Drive, P.O. Box 246, Decora Iowa, 52101  
Phone (319)382-4194, Fax (319)382-3623

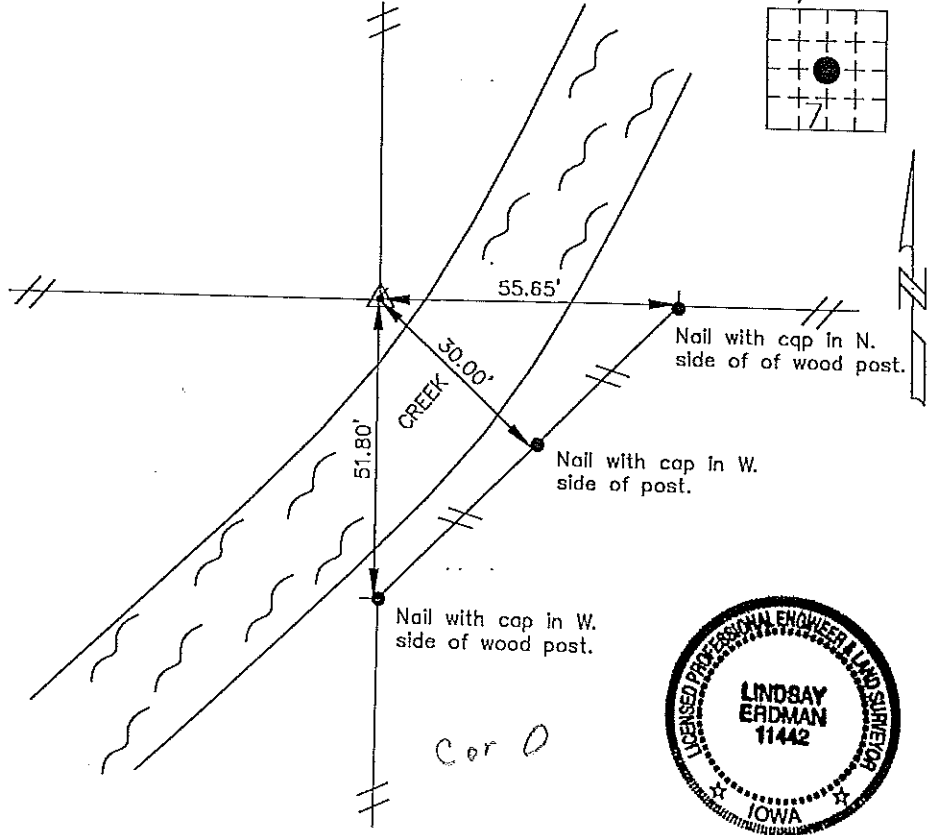
### United States Public Land Survey Corner Certificate of

Land Survey Monuments situated in Section 7 Township 96 Range 13 of the Fifth Principle Meridian,  
Chickasaw County, Iowa. Previously recorded in does not apply in County Recorders Office.

(Show reason for preparing this certificate, the evidence and detailed procedures used in establishing the  
corner positions and monumentation found or placed.)

Monument Description and Remarks: This certificate is prepared in accordance with Section 355.11  
of the 1995 Code of Iowa. No previous certificate has been filed for this corner location. We did not  
find any record of the Center Section Corner being set or tied out previously. We did not find any  
evidence of the Center Section Corner other than the fence lines shown. We found a 1/2" bar with  
cap at the S 1/4 Corner and a P.K. nail at the N 1/4 Corner. We computed a theoretical position  
for the W 1/4 Corner. From this information we computed a theoretical position for the Center Section  
Corner and compared it with the existing fence corner position. The theoretical position for the Center Section  
Corner was over 26' different from the existing fence corner. We accepted fence corner positions  
for the NW 1/16 Corner and the W 1/8 Corner. Based on this we accepted the existing fence corner as  
the best evidence of the Center Section Corner and set a 1/2" bar with cap RLS #11442 at the existing  
fence corner with fence lines running N.-S. and E.-W. at the Center of Section 7-96-13.

Plan-View  
(Show a minimum of three reference ties to durable physical objects, relevant  
monuments and physical conditions that will enable recovery of the corner.)



I hereby certify that the survey work was completed  
and this certificate was prepared by me or under by  
direct supervision and that I am a duly registered  
land surveyor under the laws of the State of Iowa.

Signature: *Lindsay Erdman*  
Lindsay Erdman, P.E. and L.S.

Date: 4/2/97 Reg. No. 11442

My license renewal date is December 31, 1998

List Corners to be Indexed	Section	Twp.	Range
Cntr. Sec.	7	96	13