

DOCUMENT No. 01767 FILED FOR RECORD THE 26th DAY OF February, 1997 AT 8:30 O'CLOCK A.M. BOOK 163 Deeds PAGE 342 STATE OF IOWA, CHICKASAW COUNTY
 RECORDING FEE \$ 6.00 By Leitha N. Ross Recorder
 TRANSFER FEE \$ _____ LEITHA N. ROSS Deputy

Prepared by: Erdman Engineering P.C. 708 Commerce Drive, P.O. Box 246, Decorah Iowa, 52101
 Phone (319)382-4194, Fax (319)382-3623

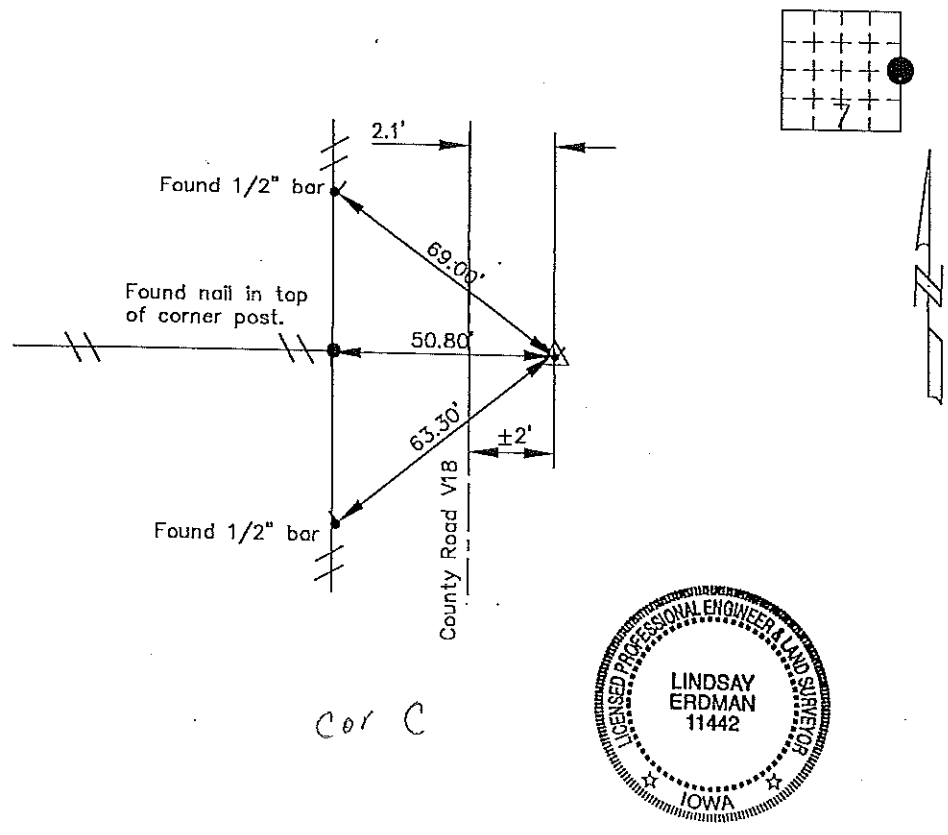
United States Public Land Survey Corner Certificate of

Land Survey Monuments situated in Section 7 Township 96 Range 13 of the Fifth Principle Meridian, Chickasaw County, Iowa. Previously recorded in does not apply in County Recorders Office.

(Show reason for preparing this certificate, the evidence and detailed procedures used in establishing the corner positions and monumentation found or placed.)

Monument Description and Remarks: This certificate is prepared in accordance with Section 355.11 of the 1995 Code of Iowa. No previous certificate has been filed for this corner location. Based on County Engineer's Reference Ties we found two 1/2" bars and one nail in a corner post used as tie markers. An iron pin was set at the E 1/4 corner in 1951, but appears to have been removed when road was paved. Based on this we cut an "X" in the PCC paving ±2' East of \bar{C} from the ties at the E 1/4 corner of Sec. 7-96-13.

Plan-View
 (Show a minimum of three reference ties to durable physical objects, relevant monuments and physical conditions that will enable recovery of the corner.)



Cor C

I hereby certify that the survey work was completed and this certificate was prepared by me or under my direct supervision and that I am a duly registered land surveyor under the laws of the State of Iowa.

Signature Lindsay Erdman
 Lindsay Erdman, P.E. and L.S.
 Date: 2/20/97 Reg. No. 11442

My license renewal date is December 31, 1998

Corners	Section	Twp.	Range
E 1/4	7	96	13