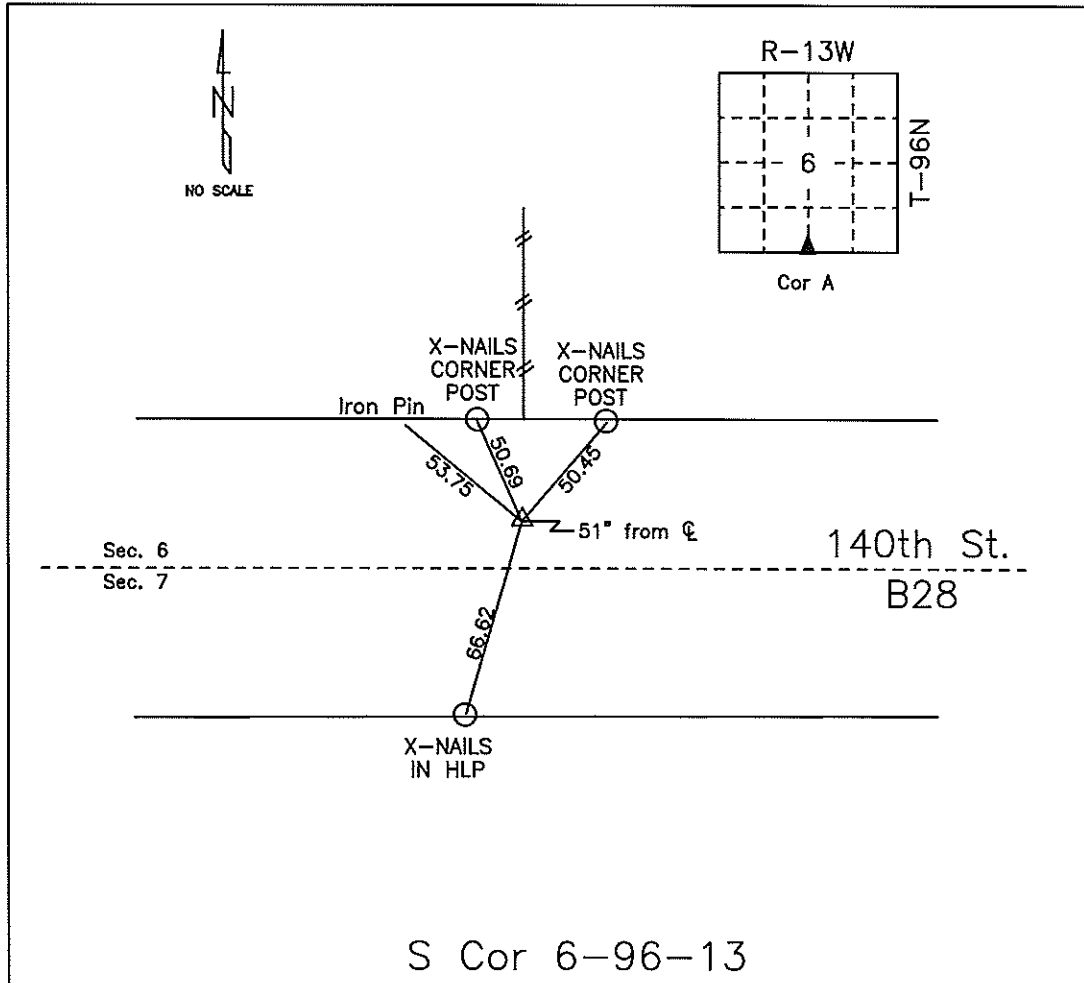


COUNTY ENGINEER'S SECTION CORNER PRESERVATION RECORD

LAND SURVEY MONUMENT LOCATED IN SECTION 06, TOWNSHIP 96 N
NORTH, RANGE 13 W, OF THE 5TH P.M. Chickasaw COUNTY, IOWA
PREVIOUSLY RECORDED COUNTY ENGINEER'S OFFICE.



MONUMENT DESCRIPTION AND NARRATIVE Set PK-Nail 05/19/09. Previously recorded by

Lindsay Erdman in Book 163, page 343 as N 1/4 corner. Also see project LC-370--73-19, station
340+59.3.

All ties are slope chained

I AM NOT A REGISTERED LAND SURVEYOR UNDER THE LAWS OF THE STATE OF IOWA

JIM FOSTER CHICKASAW CO. DATE: 05/19/09

DOCUMENT No. 01768 FILED FOR RECORD THE 26th DAY OF February 19 97 AT 8:30 P.M. STATE OF IOWA, CHICKASAW COUNTY.
 RECORDING FEE \$ 6.00 O'CLOCK A. M. BOOK 163 Deeds PAGE 343 By Leitha N. Ross Recorder
 TRANSFER FEE \$ _____ LEITHA N. ROSS Deputy

Section 6-96-13
 is referred to in
 Engg. Tie Book

Prepared by: Erdman Engineering P.C. 708 Commerce Drive, P.O. Box 246, Decorah Iowa, 52101
 Phone (319)382-4194, Fax (319)382-3623

United States Public Land Survey Corner Certificate

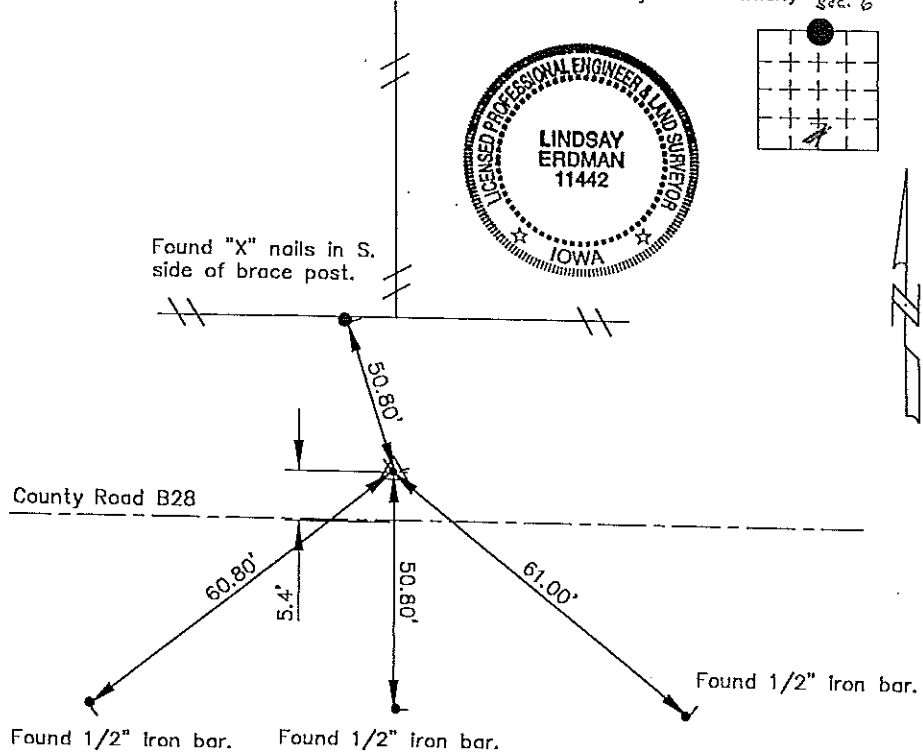
of

Land Survey Monuments situated in Section 7 Township 96 Range 13 of the Fifth Principle Meridian,
Chickasaw County, Iowa. Previously recorded In does not apply in County Recorders Office.

(Show reason for preparing this certificate, the evidence and detailed procedures used in establishing the corner positions and monumentation found or placed.)

Monument Description and Remarks: This certificate is prepared in accordance with Section 355.11
 of the 1995 Code of Iowa. No previous certificate has been filed for this corner location. Based on
 County Engineer's Reference Ties we found three 1/2" bars and one set of "X" nails used as tie
 markers. From these ties we found a P.K. nail at the N 1/4 corner of Sec. 7-96-13.

Plan-View
 (Show a minimum of three reference ties to durable physical objects, relevant
 monuments and physical conditions that will enable recovery of the corner.)



Cor. A
 6-96-13

I hereby certify that the survey work was completed
 and this certificate was prepared by me or under by
 direct supervision and that I am a duly registered
 land surveyor under the laws of the State of Iowa.

Signature Lindsay Erdman
 Lindsay Erdman, P.E. and L.S.

Date: 2/20/97 Reg. No. 11442

My license renewal date is December 31, 1998

Corners	List Corners to be Indexed		
	Section	Twp.	Range
N 1/4	7	96	13