

DOCUMENT No. **02056**
 RECORDING FEE \$ **6.00**
 TRANSFER FEE \$ **0.00**

FILED FOR RECORD THE **10th** DAY OF **April**, 19**97** AT **8:30** O'CLOCK A.M. BOOK **164** Deeds PAGE **15**

STATE OF IOWA, CHICKASAW COUNTY,
 By *Leitha H. Ross* Recorder
 LEITHA H. ROSS Deputy

Prepared by: Erdman Engineering P.C. 708 Commerce Drive, P.O. Box 246, Decorah Iowa, 52101
 Phone (319)382-4194, Fax (319)382-3623

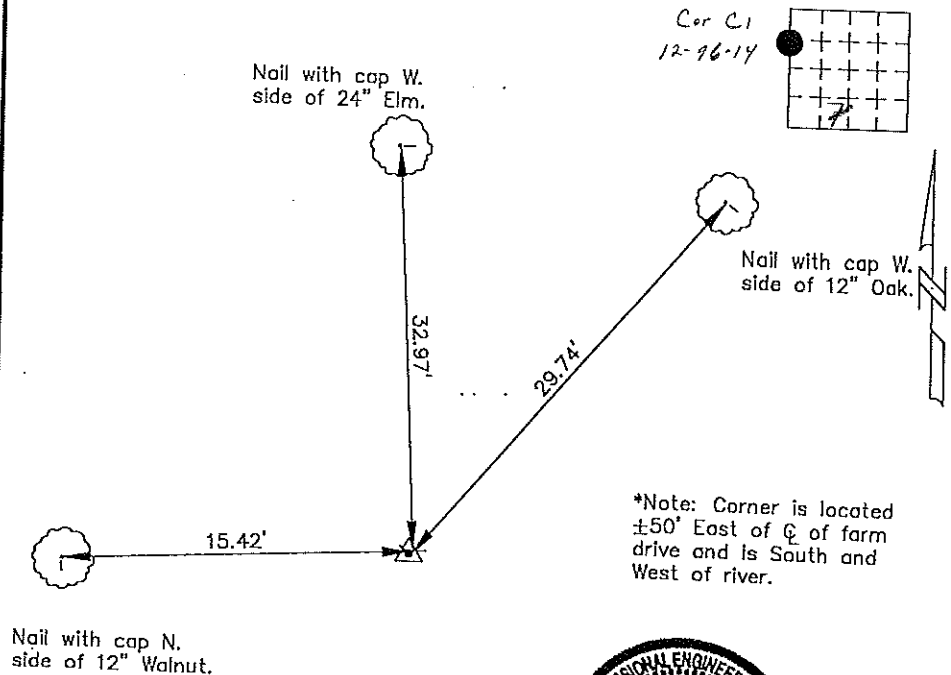
United States Public Land Survey Corner Certificate

Land Survey Monuments situated in Section 12 of 14 Township 96 Range 13 of the Fifth Principle Meridian, Chickasaw County, Iowa. Previously recorded in does not apply in County Recorders Office.

(Show reason for preparing this certificate, the evidence and detailed procedures used in establishing the corner positions and monumentation found or placed.)

Monument Description and Remarks: This certificate is prepared in accordance with Section 355.11 of the 1995 Code of Iowa. No previous certificate has been filed for this corner location. We did not find any record of the WNW 1/8 corner being set or tied out previously. We did not find any evidence of the WNW 1/8 corner. We found a P.K. nail at the NW corner and a 1/2" bar at the SW Corner. We computed a theoretical position for the W 1/4 Corner on line and midway between the NW Corner and the SW Corner. Based on this we set a 1/2" bar with cap RLS #11442 on line and midway between the NW Corner and the W 1/4 at the WNW 1/8 Corner of Section 7-96-13.

Plan-View
 (Show a minimum of three reference ties to durable physical objects, relevant monuments and physical conditions that will enable recovery of the corner.)



Cor. C1
 12-96-14



I hereby certify that the survey work was completed and this certificate was prepared by me or under by direct supervision and that I am a duly registered land surveyor under the laws of the State of Iowa.

Signature *Lindsay Erdman*
 Lindsay Erdman, P.E. and L.S.

Date: 3/28/97 Reg. No. 11442

My license renewal date is December 31, 1998

List Corners to be Indexed

Corners	Section	Twp.	Range
WNW 1/8	7	96	13

Section 12-96-14
 As referred to in
 Engr. Tie Book