

1  
C  
M  
S

02054

DOCUMENT No. FILED FOR RECORD THE 10th DAY OF April, 1997 AT 8:30 O'CLOCK A.M. BOOK 164 Deeds PAGE 13

STATE OF IOWA, CHICKASAW COUNTY, *Leitha N. Ross* Recorder  
LEITHA N. ROSS Deputy

Prepared by: Erdman Engineering P.C. 708 Commerce Drive, P.O. Box 246, Decorah Iowa, 52101  
Phone (319)382-4194, Fax (319)382-3623

### United States Public Land Survey Corner Certificate of

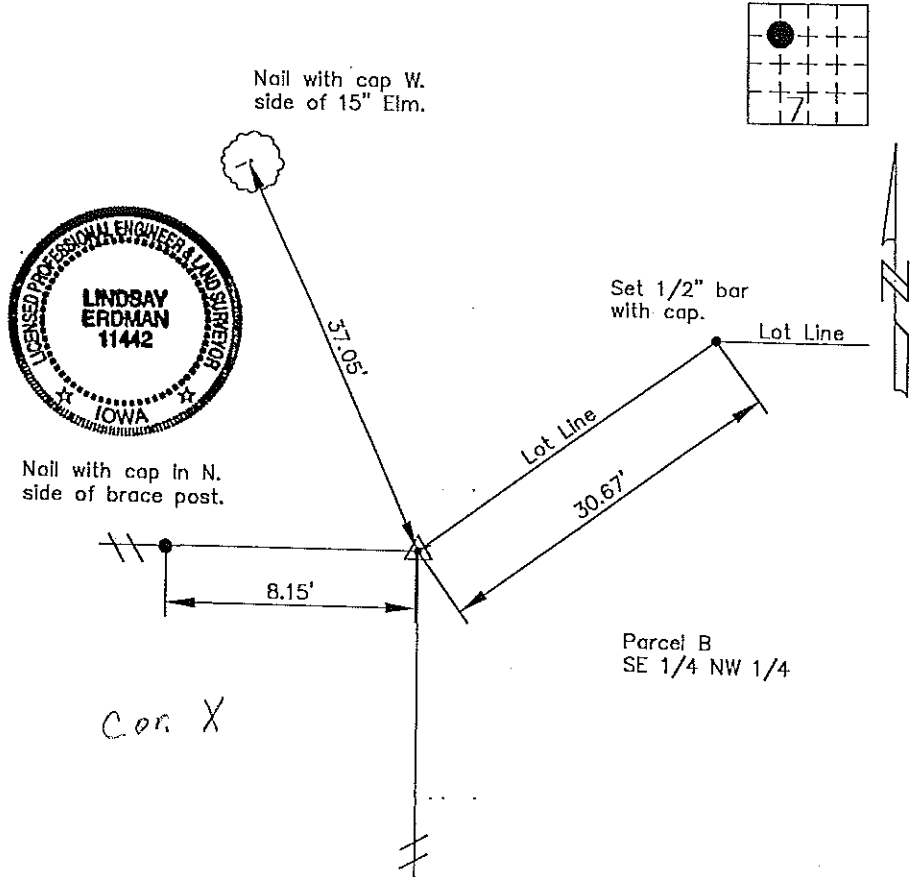
Land Survey Monuments situated in Section 7 Township 96 Range 13 of the Fifth Principle Meridian, Chickasaw County, Iowa. Previously recorded in does not apply in County Recorders Office.

(Show reason for preparing this certificate, the evidence and detailed procedures used in establishing the corner positions and monumentation found or placed.)

Monument Description and Remarks: This certificate is prepared in accordance with Section 355.11 of the 1995 Code of Iowa. No previous certificate has been filed for this corner location. We did not find any record of the NW 1/16 corner being set or tied out previously. We did not find any evidence of the NW 1/16 corner other than the fence lines shown. Due to the irregular dimensions of the NW 1/4 (Auditors dim. of 15.30ch. along the N. side of "W 1/2" NW 1/4 and the extremely long remaining 1451.00' along the "E 1/2" of the NW 1/4) we chose to use the fence line location as the best location of the NW 1/16 Corner. No dimension was available along the center section line to determine the location of the W 1/8 Corner so therefore we set a 1/2" bar with cap RLS #11442 at an existing fence corner with fence lines running South and West as the NW 1/16 Corner of Section 7-96-13.

Plan-View

(Show a minimum of three reference ties to durable physical objects, relevant monuments and physical conditions that will enable recovery of the corner.)



I hereby certify that the survey work was completed and this certificate was prepared by me or under by direct supervision and that I am a duly registered land surveyor under the laws of the State of Iowa.

Signature: *Lindsay Erdman*  
Lindsay Erdman, P.E. and L.S.  
Date: 4/2/97 Reg. No. 11442

My license renewal date is December 31, 1998

Comers	Section	Twp.	Range
NW 1/16	7	96	13