

Prepared by & Return to: Herold - Reicks Surveying, 10 East Main Street, New Hampton, IA 50659, Ph. 641-394-2725

UNITED STATES PUBLIC LAND SURVEY CORNER CERTIFICATE

Land Survey Monuments situated in Section **5**, Township **96** North, Range **13** West of the Fifth Principal Meridian, **Chickasaw** County, Iowa. **1., 2.)** Previously recorded in the County Recorder's office.

This certificate is being prepared in compliance with Iowa Code Chapter 355.11 because:

- 1 & 2 There is no certificate on file for this corner.
- There are no longer three valid ties of record.
- There are changes to reference ties of record.
- There is change of monumentation of record.
- To clarify description of record monument (ties).

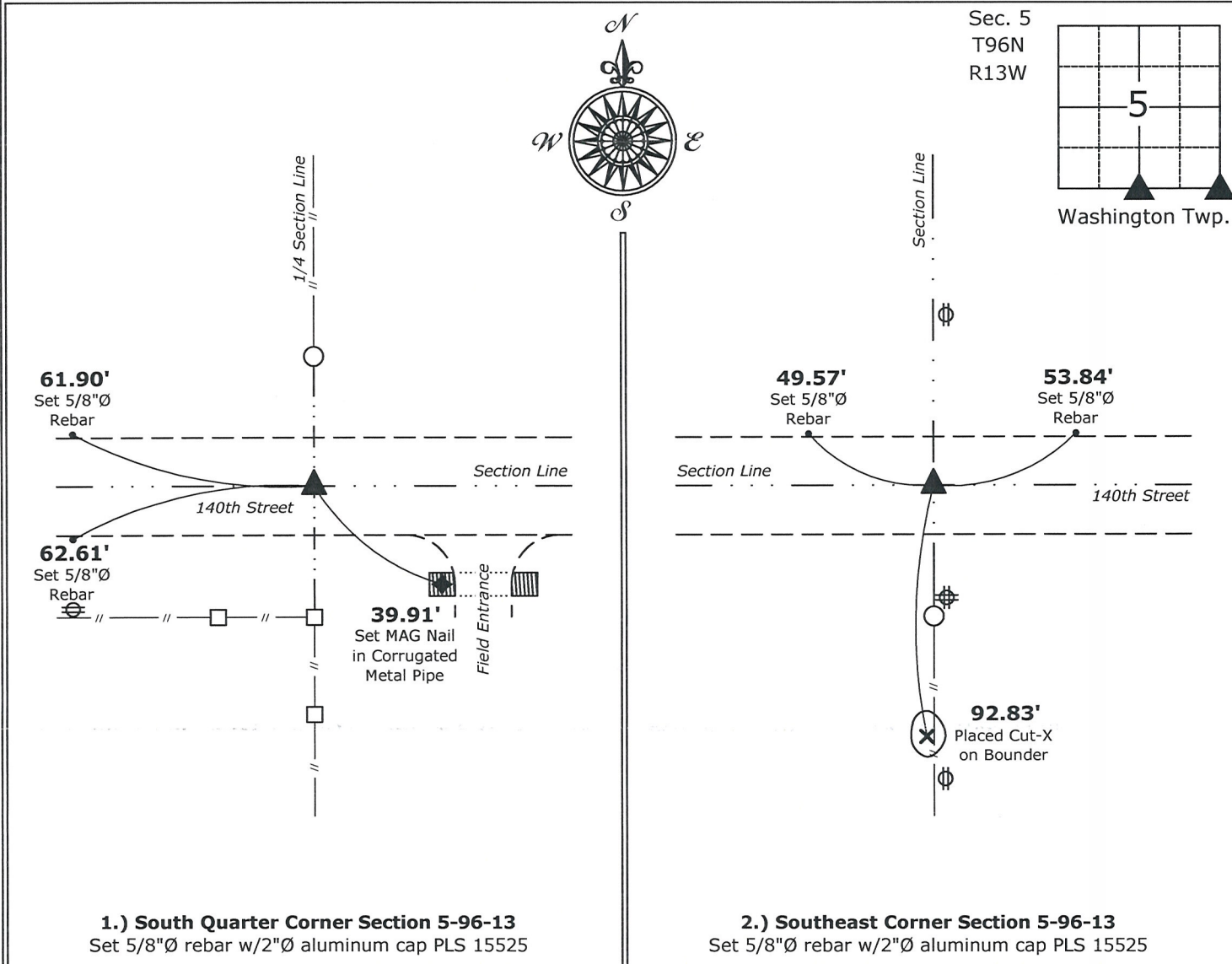
Monument Description and Remarks:

1.) South Quarter Corner: Fd. 100d Nail, removed, checked further for magnetic reading without results; accepted position and set 5/8"Ø rebar w/2"Ø aluminum cap PLS 15525.

2.) Southeast Corner: Fd. 60d Nail, removed, checked further for magnetic reading without results; accepted position and set 5/8"Ø rebar w/2"Ø aluminum cap PLS 15525.

PLAN - VIEW

(Show a minimum of three reference ties to durable physical objects, relevant monuments and physical conditions that will enable recovery of the corner.)



1.) South Quarter Corner Section 5-96-13
Set 5/8"Ø rebar w/2"Ø aluminum cap PLS 15525

2.) Southeast Corner Section 5-96-13
Set 5/8"Ø rebar w/2"Ø aluminum cap PLS 15525



I hereby certify that this land surveying document was prepared and the related survey work was performed by me or under my direct personal supervision and that I am a duly licensed Land Surveyor under the laws of the State of Iowa.

Paul R. Herold 2-6-15
Paul R. Herold Date:
License number 15525
My license renewal date is December 31, 2016.
Sheets covered by this seal: Individual sheet only

List Corners to be Indexed			
Corners	Section	Twp.	Range
S 1/4	5	96	13
SE	5	96	13

Project Number: 2015-016
FB: Chickasaw 6, Pgs. 69-70