

Prepared by & Return to: Harold - Reicks Surveying, 101 East Main Street, New Hampton, IA 50659, Ph. 641-394-2725

UNITED STATES PUBLIC LAND SURVEY CORNER CERTIFICATE

Land Survey Monuments situated in Section ⁹10, Township 96 North, Range 13 West of the Fifth Principal Meridian, Chickasaw County, Iowa. 1.) Not previously recorded in the County Recorder's office. 2.) Previously recorded in Document #2008-1783, in the County Recorder's office.

This certificate is being prepared in compliance with Iowa Code Chapter 355.11 because:

- 1 There is no certificate on file for this corner.
- There are no longer three valid ties of record.
- There are changes to reference ties of record.
- There is change of monumentation of record.
- 2 To clarify description of record monument (ties).

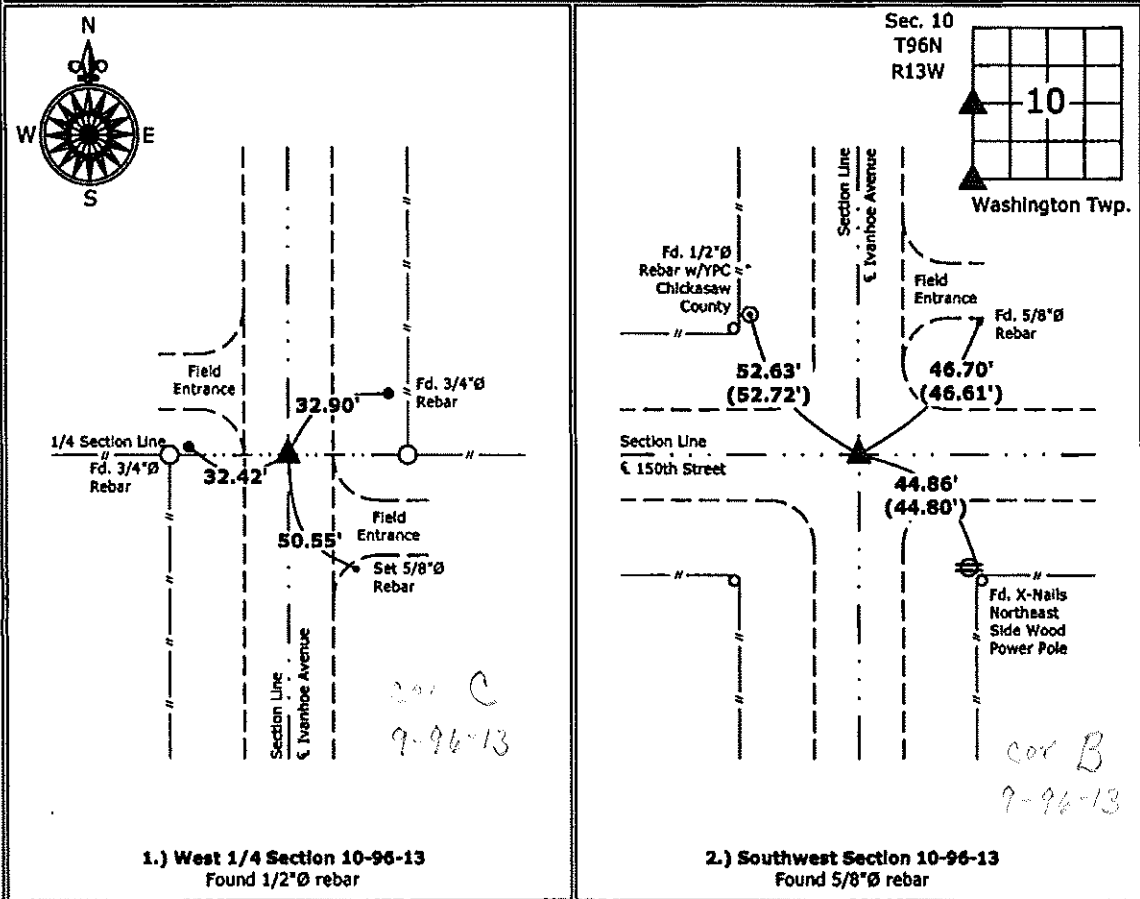
Monument Description and Remarks:

1.) West 1/4 Corner: Found 1/2"Ø rebar with information obtained from the County Engineer's office in Field Book Washington Twp. Corner Ties, Section 9, Corner "C".

2.) Southwest Corner: Found 5/8"Ø rebar with information obtained from the previous Section Corner Certificate. Updated reference ties of record and clarified monument description.

PLAN - VIEW

(Show a minimum of three reference ties to durable physical objects, relevant monuments and physical conditions that will enable recovery of the corner.)



1.) West 1/4 Section 10-96-13
 Found 1/2"Ø rebar

2.) Southwest Section 10-96-13
 Found 5/8"Ø rebar



I hereby certify that this land surveying document was prepared and the related survey work was performed by me or under my direct personal supervision and that I am a duly licensed Land Surveyor under the laws of the State of Iowa.

Kirk D. Reicks 7-15-13
 Kirk D. Reicks Date:

License number 19211
 My license renewal date is December 31, 2014.
 Sheets covered by this seal: Individual sheet only

List Corners to be Indexed			
Corners	Section	Twp.	Range
W 1/4	10	96	13
SW	10	96	13

Project Number: 2012-209

FB: Chickasaw County 5, Pgs. 7-11

Prepared by & Return to: Harold - Reicks Surveying, 10 East Main Street, New Hampton, IA 50658, Ph. 641-394-2725

UNITED STATES PUBLIC LAND SURVEY CORNER CERTIFICATE

Land Survey Monuments situated in Section **10**, Township **96 North**, Range **13 West** of the Fifth Principal Meridian, **Chickasaw County, Iowa**. 1.) Not previously recorded in the County Recorder's office. 2.) Previously recorded in Document #2008-1783, in the County Recorder's office.

This certificate is being prepared in compliance with Iowa Code Chapter 355.11 because:

- 1 There is no certificate on file for this corner.
- There are no longer three valid ties of record.
- There are changes to reference ties of record.
- There is change of monumentation of record.
- 2 To clarify description of record monument (ties).

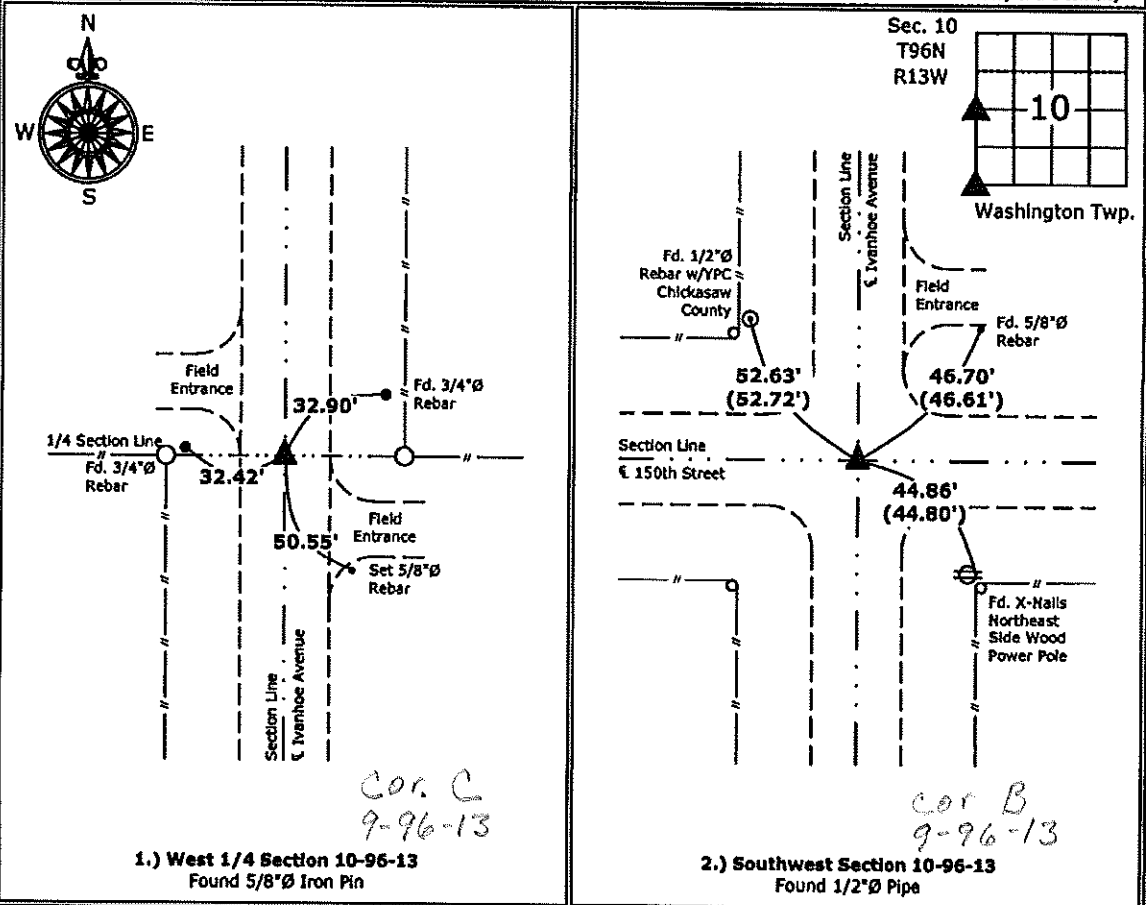
Monument Description and Remarks:

1.) West 1/4 Corner: Found 5/8"Ø Iron pin with information obtained from the County Engineer's office in Field Book Washington Twp. Corner Ties, Section 9, Corner "C".

2.) Southwest Corner: Found 1/2"Ø pipe with information obtained from previous Section Corner Certificate. Updated reference ties of record and clarified monument description.

PLAN - VIEW

(Show a minimum of three reference ties to durable physical objects, relevant monuments and physical conditions that will enable recovery of the corner.)



I hereby certify that this land surveying document was prepared and the related survey work was performed by me or under my direct personal supervision and that I am a duly licensed Land Surveyor under the laws of the State of Iowa.
Kirk D. Reicks 1-7-13
 Kirk D. Reicks Date:
 License number 19211
 My license renewal date is December 31, 2014.
 Sheets covered by this seal: Individual sheet only

List Corners to be Indexed			
Corners	Section	Twp.	Range
W 1/4	10	96	13
SW	10	96	13

Project Number: 2012-209
 FB: Chickasaw County 5, Pgs. 7-11