



Prepared by & Return to: Herold - Reicks Surveying, 10 East Main Street, New Hampton, IA 50659, Ph. 641-394-2725

United States Public Land Survey Corner Certificate

Land Survey Monument situated in
 Section 9, Township 96 North, Range 13 West of the Fifth Principal Meridian, **Chickasaw** County, Iowa.
 Not on file in the County Recorder's Office.

This certificate is being prepared in compliance with Iowa Code Chapter 355.11 because:



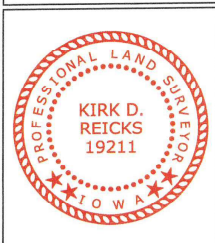
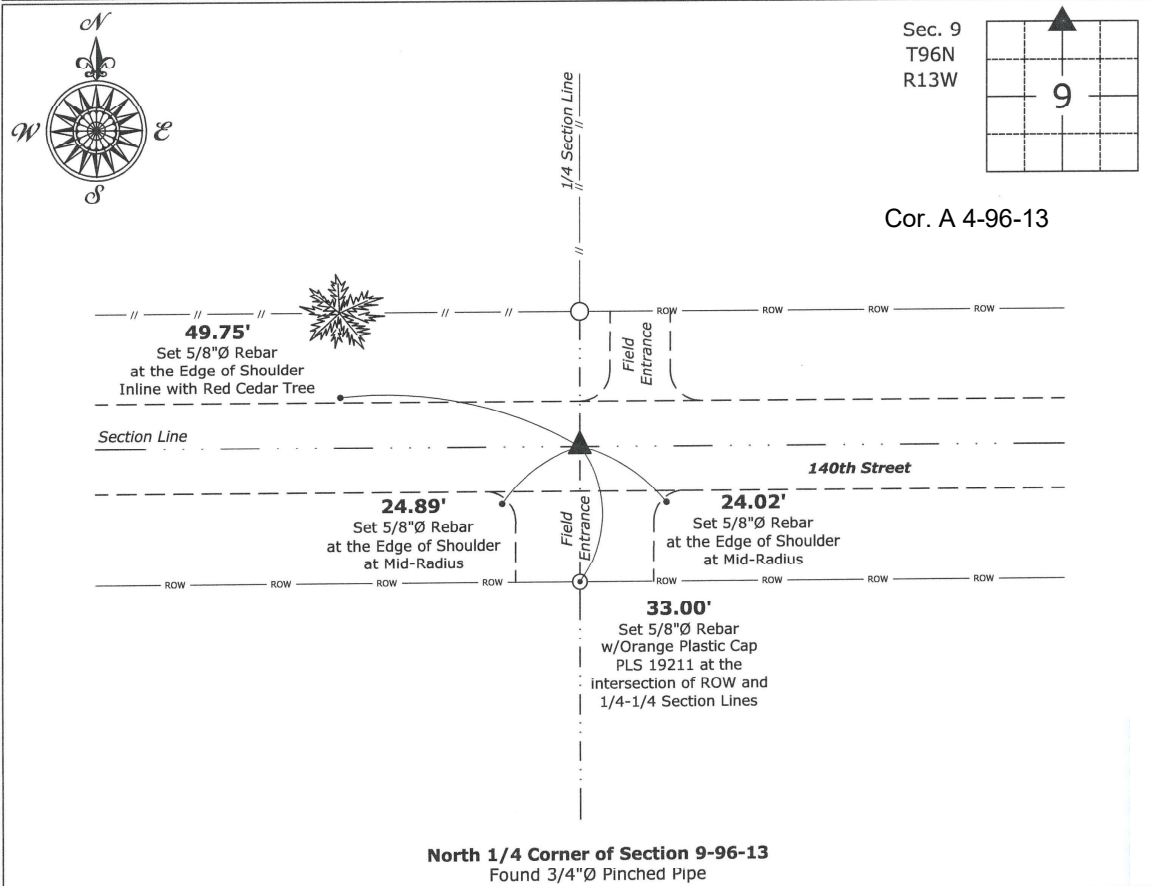
- There is no certificate on file for this corner.
- There are no longer three valid ties of record.
- There are changes to reference ties of record.
- There is change of monumentation of record.
- To clarify description of record monument (ties).

Monument Description and Remarks:

North 1/4 Corner: Found 3/4"Ø Pinched Pipe with information obtained from Chickasaw County Engineer's Field Book Washington S. Twp. Ties to Corners, Section 4, Corner A.

Plan View

(Show a minimum of three reference ties to durable physical objects, relevant monuments and physical conditions that will enable recovery of the corner.)



I hereby certify that this land surveying document was prepared and the related survey work was performed by me or under my direct personal supervision and that I am a duly licensed Land Surveyor under the laws of the State of Iowa.

Kirk D. Reicks 1-12-2023
 Kirk D. Reicks Date:

License number 19211
 My license renewal date is December 31, 2024.
 Sheets covered by this seal: Individual sheet only

List Corner to be Indexed			
Corner	Section	Twp.	Range
N 1/4	9	96	13

Project Number: 2023-001
 FB: Chickasaw Co 11, Pgs. 78-79

File: S:_ Projects - NHD\County Control Systems - NHD\CHICKASAW\CHICK-11 - 2022.dwg, 1/12/2023 3:16:09 PM