

Herold - Reicks Surveying, 25 1/2 East Main Street, Suite 204, New Hampton, IA 50659, Ph. 641-394-2725

## UNITED STATES PUBLIC LAND SURVEY CORNER CERTIFICATE

Land Survey Monuments situated in Section **19**, Township **97** North, Range **13** West of the Fifth Principal Meridian, **Chickasaw** County, Iowa. Previously recorded in 1.) Bk. 154 , Pg.495, in the **Chickasaw** County Recorder's office, 2.) Not Recorded

This certificate is being prepared in compliance with Iowa Code Chapter 355.11 because:

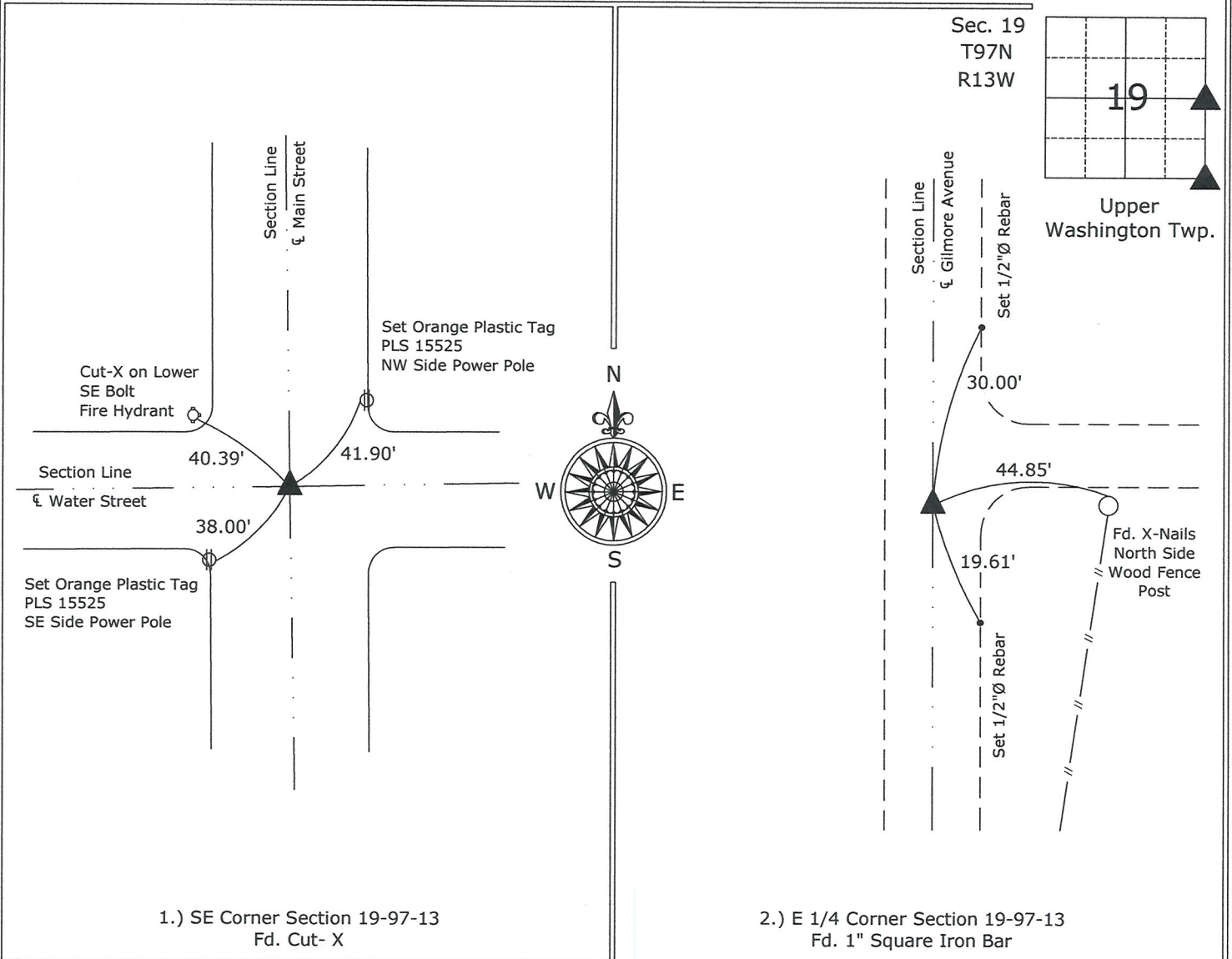
- 2.  There is no certificate on file for this corner.
- 1.  There are no longer three valid ties of record.
- 1.  There are changes to reference ties of record.
- There is change of monumentation of record.
- 1.  To clarify description of record monument (ties).

Monument Description and Remarks:

- 1.) SE Corner Section 19-97-13: Fd. Cut-X from information on the previous Section Corner Certificate and the information obtained from the County Engineers Office, in Field Book Upper Washington Corner Ties, Section 19, Corner "B", all of the previous ties are gone, established new ties.
- 2.) E 1/4 Corner Section 19-97-13: Fd. 1" Square Iron Bar from information obtained from the Chickasaw County Engineer's Office, in Field Book Upper Washington Corner Ties, Section 19, Corner "C".

### PLAN - VIEW

(Show a minimum of three reference ties to durable physical objects, relevant monuments and physical conditions that will enable recovery of the corner.)



1.) SE Corner Section 19-97-13  
Fd. Cut- X

2.) E 1/4 Corner Section 19-97-13  
Fd. 1" Square Iron Bar



I hereby certify that this land surveying document was prepared and the related survey work was performed by me or under my direct personal supervision and that I am a duly licensed Land Surveyor under the laws of the State of Iowa.

*Paul R. Herold* 10-31-08  
Paul R. Herold Date:

License number 15525  
My license renewal date is December 31, 2008.  
Sheets covered by this seal: Individual sheet only

List Corners to be Indexed			
Corners	Section	Twp.	Range
SE	19	97	13
E 1/4	19	97	13

Project Number: 2008-127

FB: Alta Vista 1, Pg. 2