

Prepared by & Return to: Harold - Reicks Surveying, 10 East Main Street, New Hampton, IA 50659, Ph. 641-394-2725

UNITED STATES PUBLIC LAND SURVEY CORNER CERTIFICATE

Land Survey Monuments situated in Section ²⁴19, Township ¹³97 North, Range ¹³12 West of the Fifth Principal Meridian, Chickasaw County, Iowa. 1., 2.) Previously unrecorded in the County Recorder's office.

This certificate is being prepared in compliance with Iowa Code Chapter 355.11 because:

- 1 & 2 There is no certificate on file for this corner.
 There are no longer three valid ties of record.
 There are changes to reference ties of record.
 There is change of monumentation of record.
 To clarify description of record monument (ties).

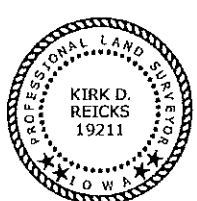
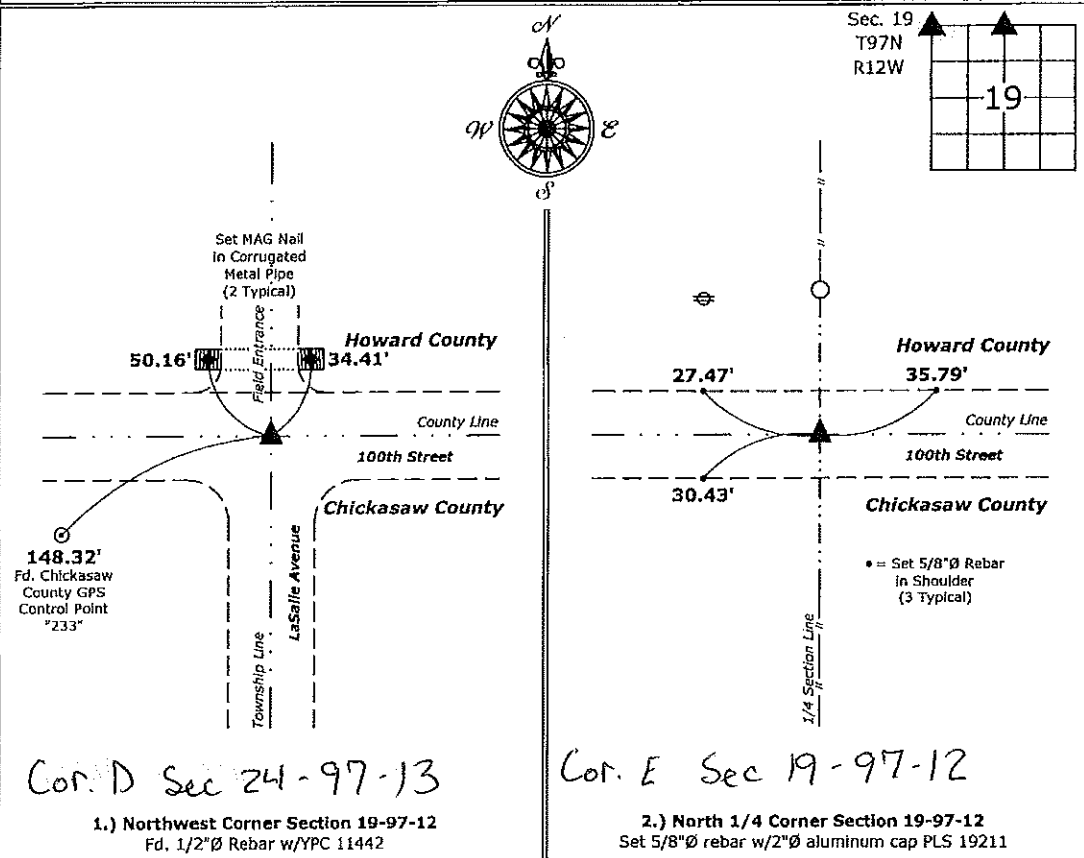
Monument Description and Remarks:

1.) Northwest Corner: Fd. 1/2"Ø Rebar w/Yellow Plastic Cap 11442 with information obtained from a Section Corner Certificate recorded in Book E, Page 263, on file in the Howard County Recorder's office, Cresco, Iowa.

2.) North 1/4 Corner: Set 5/8"Ø rebar w/2"Ø aluminum cap PLS 19211 at the intersection of the Centerline of 100th Street and extensions of possession line fences from the North and South.

PLAN - VIEW

(Show a minimum of three reference ties to durable physical objects, relevant monuments and physical conditions that will enable recovery of the corner.)



I hereby certify that this land surveying document was prepared and the related survey work was performed by me or under my direct personal supervision and that I am a duly licensed Land Surveyor under the laws of the State of Iowa.

Kirk D. Reicks 6-17-16
 Kirk D. Reicks Date:
 License number 19211
 My license renewal date is December 31, 2016.
 Sheets covered by this seal: Individual sheet only

List Corners to be Indexed			
Corners	Section	Twp.	Range
NW	19	97	12
N 1/4	19	97	12

Project Number: 2016-023
 FB: Chickasaw 7, Pgs. 65-67

File: S:_CED Projects\County Control Systems\CHICKASAW\CHICK-5.dwg, 6/16/2016 8:05:30 AM

Section 19-97-13
As referred to in
Engg. Tie Book.

DOCUMENT No. 00995 FILED FOR RECORD THE 6th DAY OF NOVEMBER 1992 AT 8:46 P.M. BOOK 150 PAGE 373
RECORDING FEE \$ 5.00 TRANSFER FEE \$ O'CLOCK A.M. BY Mary C. Murray Recorder
STATE OF IOWA, CHICAGO COUNTY, IOWA. MARY C. MURRAY Deputy

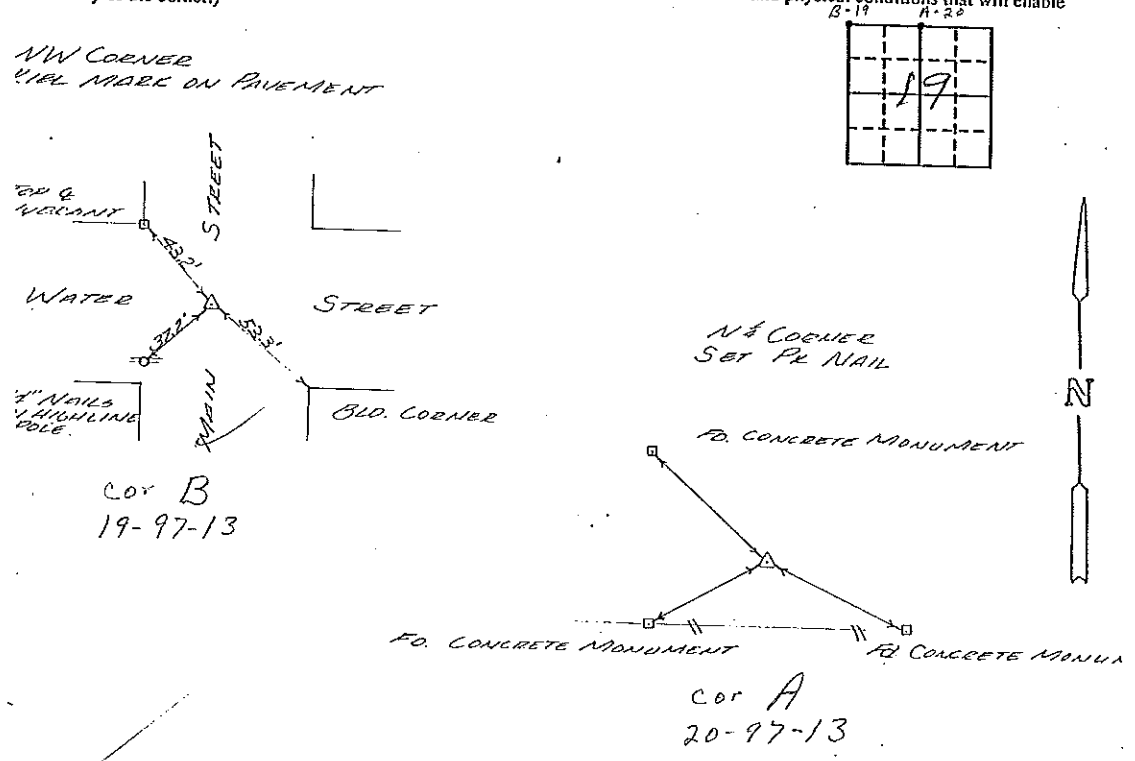
UNITED STATES PUBLIC LAND SURVEY CORNER CERTIFICATE

OF 19
Land Survey Monuments situated in Section 29, Township 97, Range 13, of the Fifth Principal Meridian, CHICAGO County, Iowa.
Previously recorded in _____ in County Recorder's Office.
(book, page, document number, etc.)

(Show reason for preparing this certificate, the evidence and detailed procedures used in establishing the corner positions and monumentation found or placed.)
Monument Description and Remarks: _____

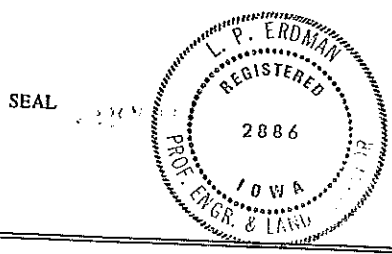
PLAN - VIEW

(Show a minimum of three reference ties to durable physical objects, relevant monuments and physical conditions that will enable recovery of the corner.)



I hereby certify that the survey work was completed and this certificate was prepared by me or under my direct personal supervision and that I am a duly registered land surveyor under the laws of the state of Iowa.
Signature: L. P. Erdman
Name typed or printed: L. P. ERDMAN
Date: 11-02-92 Reg. No. 2886

Comers	List Corners to be Indexed Section	Twp	Range
NW	29	97	13
NE	29	97	13



Place in Tie Book
11/6/92