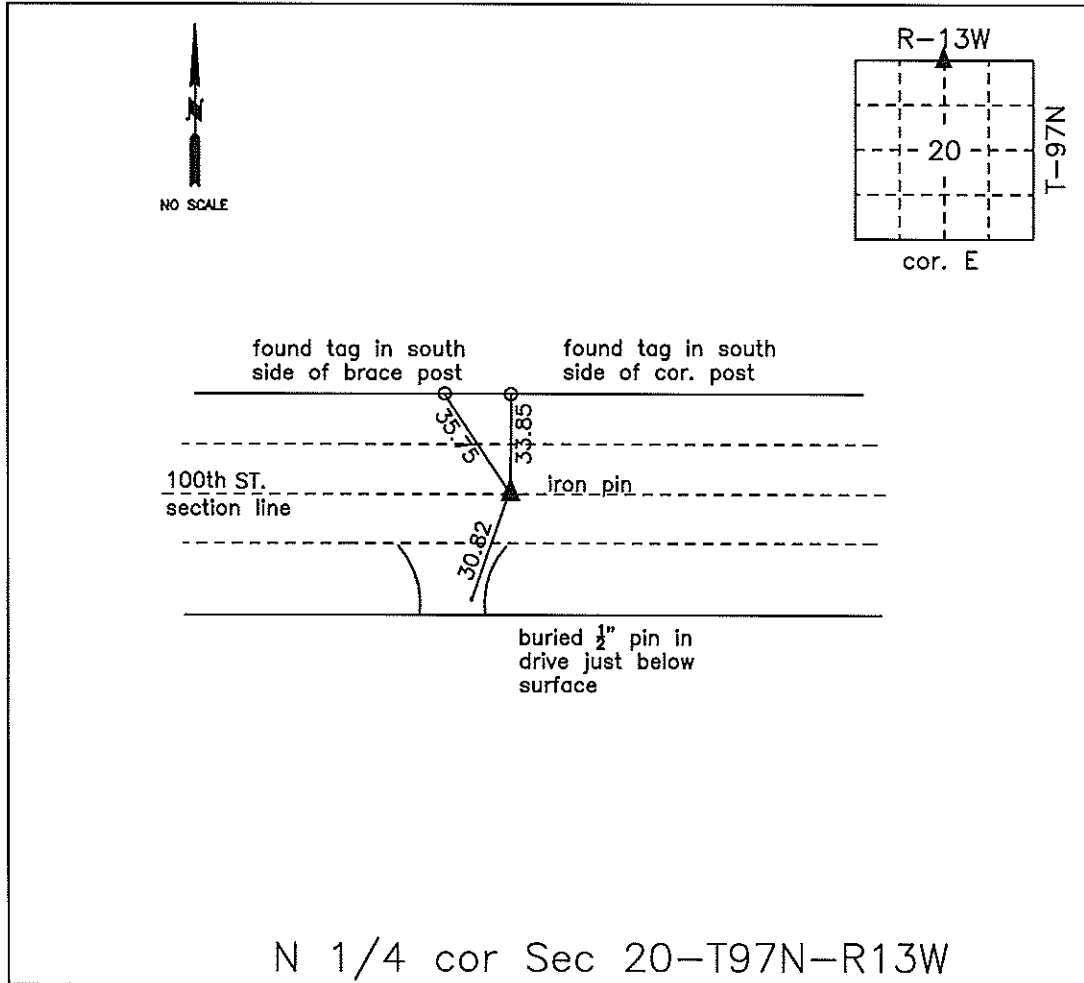


COUNTY ENGINEER'S SECTION CORNER PRESERVATION RECORD

LAND SURVEY MONUMENT LOCATED IN SECTION 20, TOWNSHIP 97 N
NORTH, RANGE 13 W, OF THE 5TH P.M. Chickasaw COUNTY, IOWA
PREVIOUSLY RECORDED 2007-0520



MONUMENT DESCRIPTION AND NARRATIVE Found iron pin with red cap.

Previously recorded by HRS (2007-0520).

Gate post to S/W was missing. Buried pin in east side of driveway to the south.

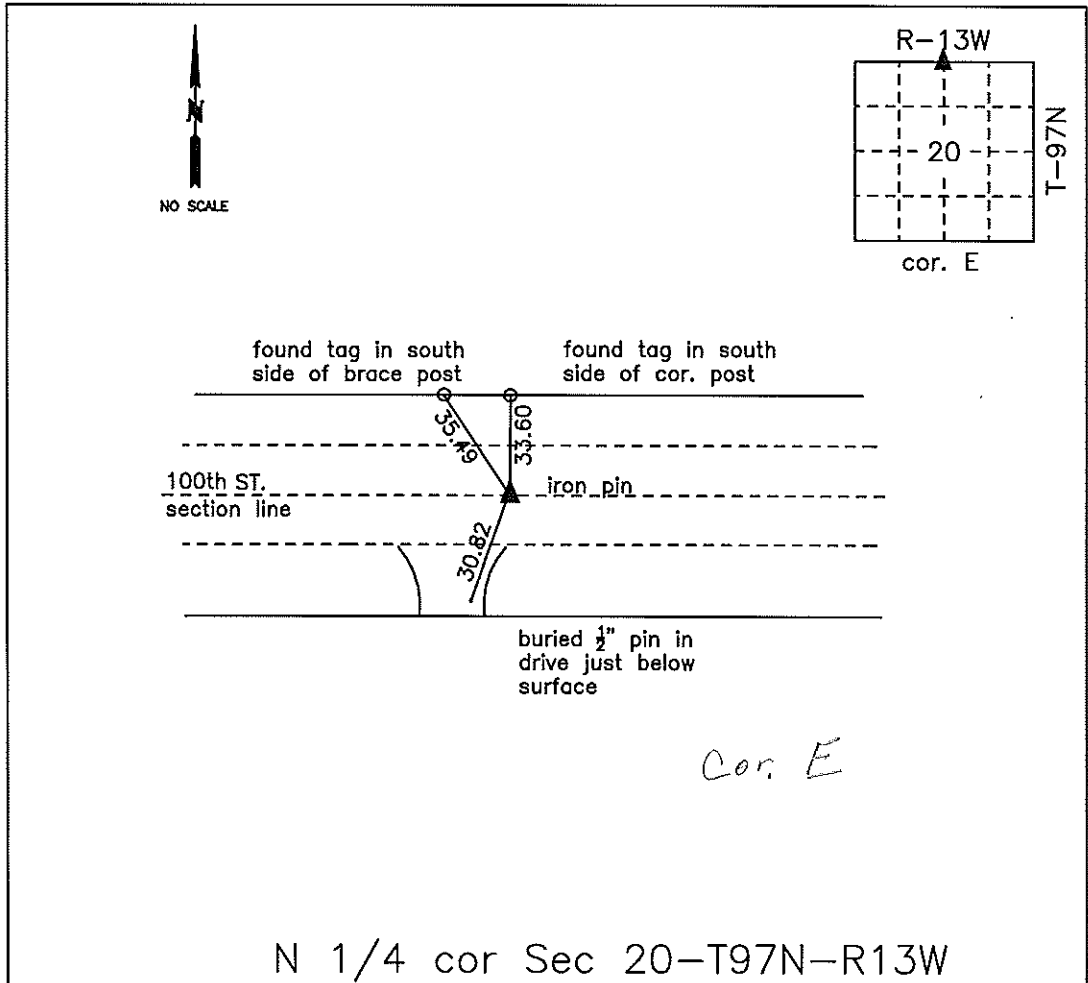
All ties are GPS surveyed.

I AM NOT A REGISTERED LAND SURVEYOR UNDER THE LAWS OF THE STATE OF IOWA

ROMAN LENSING CHICKASAW CO. DATE: 6/18/2014

COUNTY ENGINEER'S SECTION CORNER PRESERVATION RECORD

LAND SURVEY MONUMENT LOCATED IN SECTION 20, TOWNSHIP 97 N
 NORTH, RANGE 13 W, OF THE 5TH P.M. Chickasaw COUNTY, IOWA
 PREVIOUSLY RECORDED 2007-0520



MONUMENT DESCRIPTION AND NARRATIVE Found iron pin

Previously recorded by HRS (2007-0520). Did not find 100D nail with red cap as indicated by HRS

the gate post was missing at s/w side of driveway. Buried pin in east side of driveway to the south.

All ties are GPS surveyed.

I AM NOT A REGISTERED LAND SURVEYOR UNDER THE LAWS OF THE STATE OF IOWA

JIM FOSTER CHICKASAW CO. DATE: 8/21/12

ENG. COPY

Herold - Reicks Surveying, 25 1/2 East Main Street, Suite 204, New Hampton, IA 50659, Ph. 641-394-2725

UNITED STATES PUBLIC LAND SURVEY CORNER CERTIFICATE

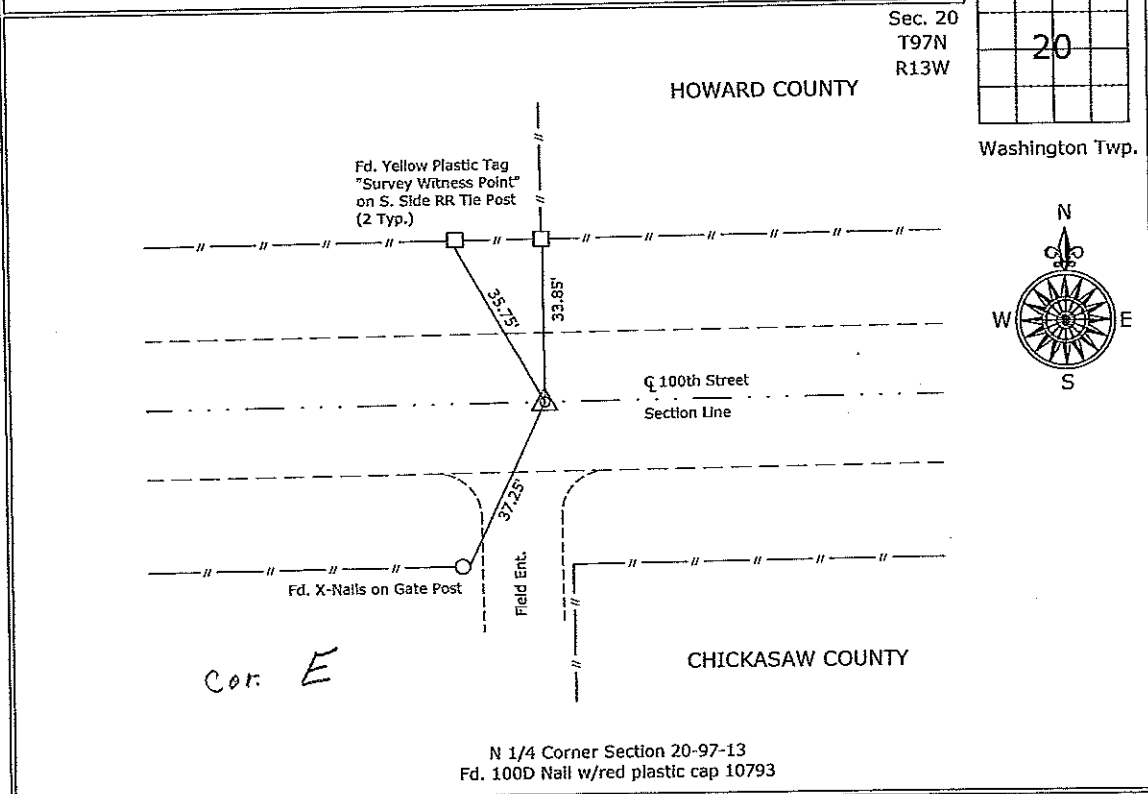
Land Survey Monuments situated in:
Section 20, Township 97 North, Range 13 West of the Fifth Principal Meridian,
Chickasaw County, Iowa. Previously recorded in N/A
in County Recorder's Office. (book, page, document number, etc.)

(Show reason for preparing this certificate, the evidence and detailed procedures used in establishing the corner positions and monumentation found or placed.)

Monument Description and Remarks: North Quarter Corner - Fd. 100D Nail with red plastic cap 10973 with information obtained from the Chickasaw County Engineer's office in Field Book "Section Corner Ties", Washington N, Sec. 20., Corner "E".

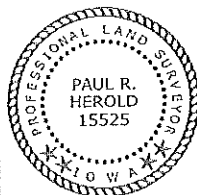
PLAN - VIEW

(Show a minimum of three reference ties to durable physical objects, relevant monuments and physical conditions that will enable recovery of the corner.)



Cor. E

N 1/4 Corner Section 20-97-13
Fd. 100D Nail w/red plastic cap 10973



I hereby certify that this land surveying document was prepared and the related survey work was performed by me or under my direct personal supervision and that I am a duly licensed Land Surveyor under the laws of the State of Iowa.

Paul R. Herold 3-20-07
Paul R. Herold Date:

License number 15525
My license renewal date is December 31, 2008.
Sheets covered by this seal: Sheet P1

List Corners to be Indexed			
Corners	Section	Twp.	Range
N 1/4	20	97	13
Project Number: 2007-019			
FB: Alta Vista 1, Pg. 1			