

Instrument #: 2022-1897
 10/14/2022 03:34:21 PM Total Pages: 1
 SCC SECTION CORNER CERTIFICATES
 Recording Fee: \$ 7.00
 Shirley Troyna, Recorder, Chickasaw County Iowa



Prepared by: Kyle A. Johnson Address: 1900 MEDICAL ARTS AVE S, SUITE 100 SARTELL, MN Phone: 1-888-937-5150

UNITED STATES PUBLIC LAND SURVEY CORNER CERTIFICATE FOR

Land survey monuments situated in Section 21, Township 97 NORTH
13 WEST, of the Fifth Principal Meridian, CHICKASAW County, Iowa.
 Previously Recorded in _____ in County Recorder's Office.

(Show reason for preparing this certificate, the evidence and detailed procedures used in establishing the corner positions and monumentation found or placed.)

MONUMENT DESCRIPTION AND REMARKS:

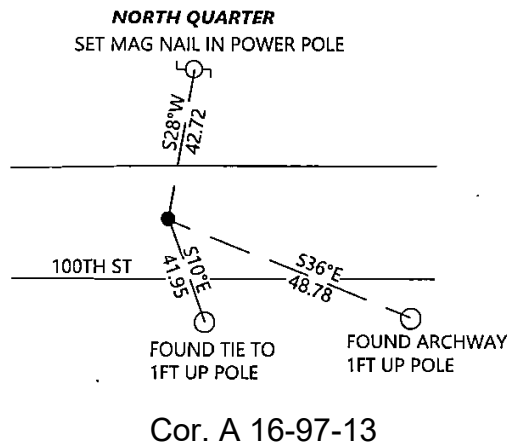
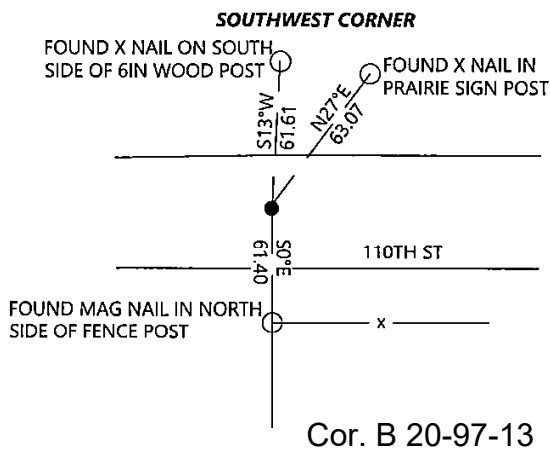
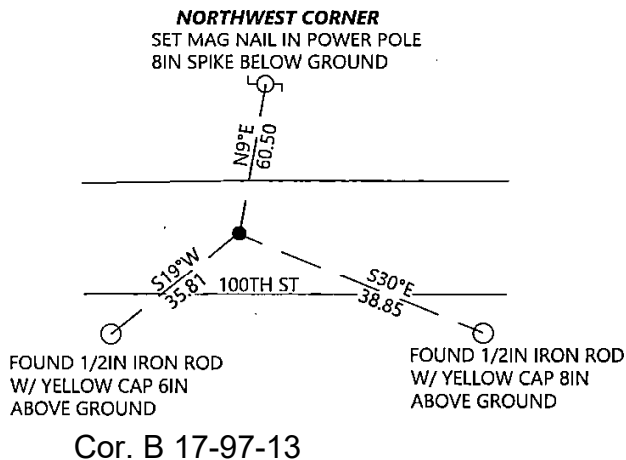
NORTHWEST CORNER: Westwood Professional Services found a T-post 0.8" deep near centerline and 2 ties per 2013 corner record. Accepting T-post as the corner location and set 1 tie. Filing corner record as there are no longer three valid ties of record.

SOUTHWEST CORNER: Westwood Professional Services found a 1/2" rebar 2' deep and 1 tie of previous record, 1 tie of unknown origin and set 1 tie. Accepting corner location. Filing corner record as there are no longer three valid ties of record.

NORTH QUARTER: Westwood Professional Services found a railroad spike 0.4' deep and 2 ties from 2013 record. Accepting corner location and set 1 tie. Filing corner record as there are no longer 3 valid ties of record.

PLAN - VIEW

(Show a minimum of three reference ties to durable physical objects, relevant monuments and physical conditions that will enable recovery of the corner.)



SEAL

I hereby certify that this land surveying document was prepared and the related survey work was performed by me or under my direct personal supervision and that I am a duly licensed Land Surveyor under the laws of the state of Iowa.

Kyle Johnson Signature Date 10/14/2022
 Typed/Printed Name: Kyle A. Johnson
 License Number: 25725
 My license renewal date is December 31, 2022
 Pages or sheets covered by this seal: THIS SHEET

Corners to be Indexed

Corners	Section	Twp.	Range
NW	21	97	13
SW	21	97	13
NQ	21	97	13