

Instrument #: 2022-1896
 10/14/2022 03:34:21 PM Total Pages: 1
 SCC SECTION CORNER CERTIFICATES
 Recording Fee: \$ 7.00
 Shirley Troyna, Recorder, Chickasaw County Iowa



Prepared by: Kyle A. Johnson Address: 1900 MEDICAL ARTS AVE S, SUITE 100 SARTELL, MN Phone: 1-888-937-5150

UNITED STATES PUBLIC LAND SURVEY CORNER CERTIFICATE FOR

Land survey monuments situated in Section 22, Township 97 NORTH
13 WEST, of the Fifth Principal Meridian, CHICKASAW County, Iowa.
 Previously Recorded in _____ in County Recorder's Office.

(Show reason for preparing this certificate, the evidence and detailed procedures used in establishing the corner positions and monumentation found or placed.)

MONUMENT DESCRIPTION AND REMARKS:

NORTHEAST CORNER: Westwood Professional Services found a 1" square bar 1.0' deep, 2 ties per 1999 record, and 2 ties per engineers tie book. Accepting corner location and set 1 tie. Filing corner record as there are no longer 3 valid ties of record.

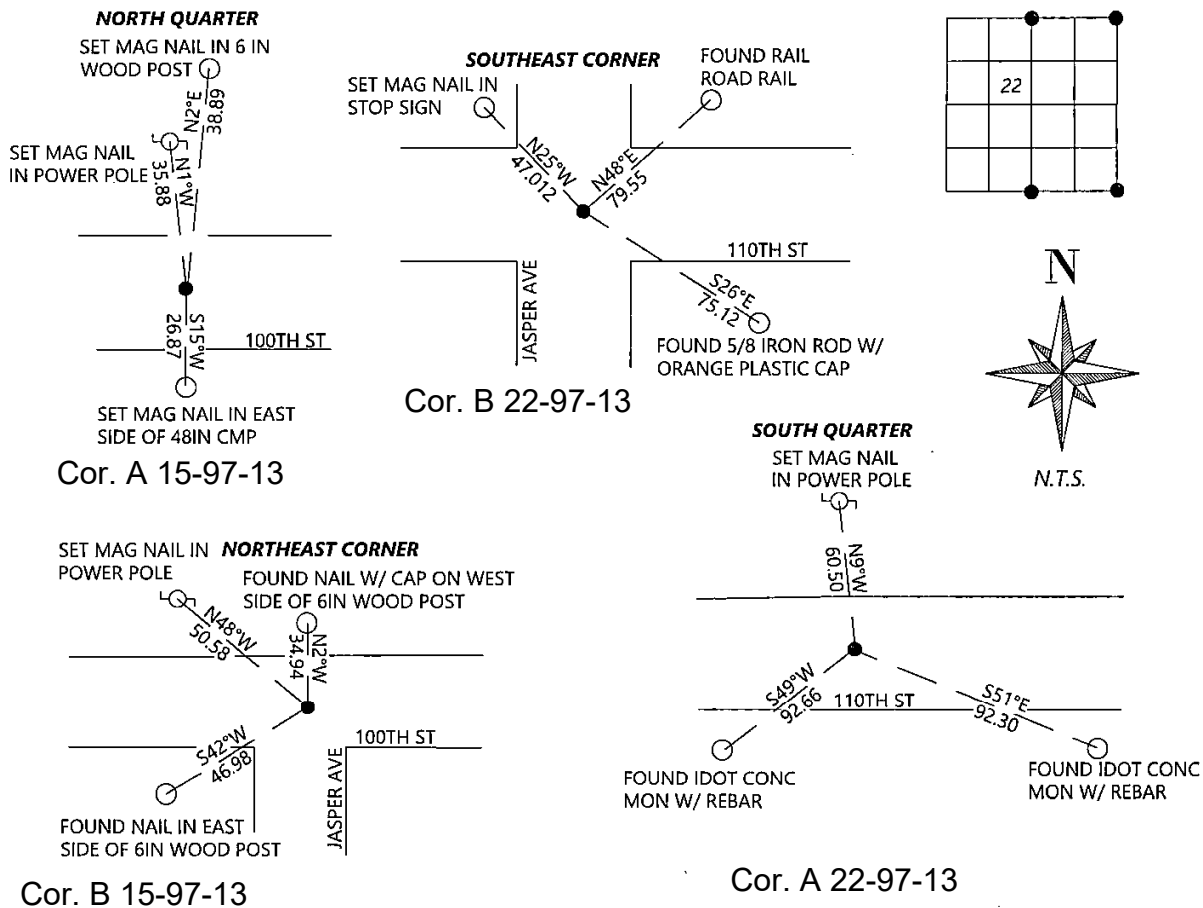
SOUTHEAST CORNER: Westwood Professional Services found a PK nail, 1 tie from engineers tie book, and 1999 record. Found 1 tie of unknown origin and set 1 tie. Accepting corner location. Filing corner record as there are no longer 3 valid ties of record.

NORTH QUARTER: Westwood Professional Services found a 5/8" bar 0.4' deep near centerline and in line with fence line north. Accepting corner location and set 3 ties. Filing corner record as there is no certificate on file for this corner.

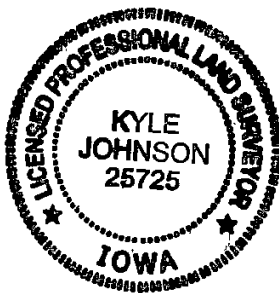
SOUTH QUARTER: Westwood Professional Services found a 5/8" rebar 2.0' deep near centerline and in line with field lines north and south. Accepting corner location as best available evidence. Filing corner record as there is no certificate on file for this corner.

PLAN - VIEW

(Show a minimum of three reference ties to durable physical objects, relevant monuments and physical conditions that will enable recovery of the corner.)



SEAL



I hereby certify that this land surveying document was prepared and the related survey work was performed by me or under my direct personal supervision and that I am a duly licensed Land Surveyor under the laws of the state of Iowa.

Signature: Kyle Johnson Date: 10/14/2022

Typed/Printed Name: Kyle A. Johnson

License Number: 25725

My license renewal date is December 31, 2022

Pages or sheets covered by this seal: THIS SHEET

Corners to be Indexed

Corners	Section	Twp.	Range
NE	22	97	13
SE	22	97	13
NQ	22	97	13
SQ	22	97	13