

DOCUMENT No. **00379** FILED FOR RECORD THE 4th DAY OF NOVEMBER, 1996 AT 8:58 O'CLOCK A.M. BOOK 162 DEEDS PAGE 281
 RECORDING FEE \$ 6.00 STATE OF IOWA, CHICKASAW COUNTY
 TRANSFER FEE \$ _____ By: Leitha N. Ross Recorder
 LEITHA N. ROSS Deputy

Prepared by: Erdman Engineering P.C. 708 Commerce Drive, P.O. Box 246, Decorah Iowa, 52101
 Phone (319)382-4194, Fax (319)382-3623

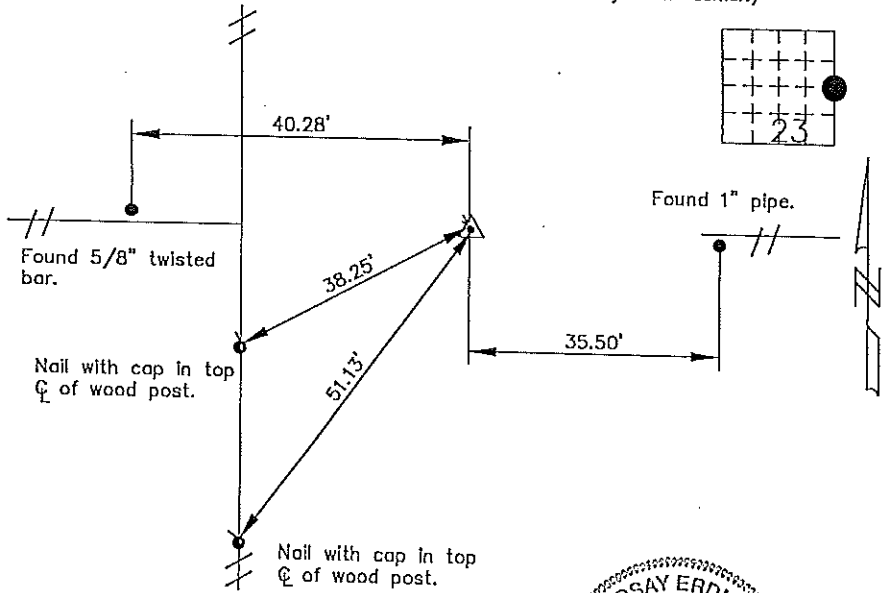
United States Public Land Survey Corner Certificate
of

Land Survey Monuments situated in Section 23 Township 97 Range 13 of the Fifth Principal Meridian, Chickasaw County, Iowa. Previously recorded in does not apply in County Recorder's Office.

(Show reason for preparing this certificate, the evidence and detailed procedures used in establishing the corner positions and monumentation found or placed.)

Monument Description and Remarks: This certificate is prepared in accordance with Section 355.11 of the 1995 Code of Iowa. No previous certificate has been filed for this corner location. Based on County Engineer's Reference Ties we found a 1" pipe and a 1" twisted bar used as tie markers. From these ties we found a 5/8" bar down ±8" below the crushed rock surface and near the center of a county road at the E 1/4 corner of Sec. 23-97-13.

Plan-View
(Show a minimum of three reference ties to durable physical objects, relevant monuments and physical conditions that will enable recovery of the corner.)



cor. C



I hereby certify that the survey work was completed and this certificate was prepared by me or under my direct supervision and that I am a duly registered land surveyor under the laws of the State of Iowa.

Signature: Lindsay Erdman
Lindsay Erdman, P.E. and L.S.

Date: 10/7/96 Reg. No. 11442

My license will be renewed January 1, 1997

Corners	List Corners to be Indexed		
	Section	Twp.	Range
E 1/4	23	97	13

162-281
BOOK PAGE