

Instrument #: 2023-0088
 01/17/2023 11:54:53 AM Total Pages: 1
 SCC SECTION CORNER CERTIFICATES
 Recording Fee: \$ 7.00
 Shirley Troyna, Recorder, Chickasaw County Iowa



Prepared by: Kyle A. Johnson Address: 1900 MEDICAL ARTS AVE S, SUITE 100 SARTELL MN Phone: 1-888-937-5150

UNITED STATES PUBLIC LAND SURVEY CORNER CERTIFICATE FOR

Land survey monuments situated in Section 23, Township 97 NORTH
 Range 13 WEST, of the Fifth Principal Meridian, CHICKASAW County, Iowa.
 Previously Recorded in _____ in County Recorder's Office.

(Show reason for preparing this certificate, the evidence and detailed procedures used in establishing the corner positions and monumentation found or placed.)

MONUMENT DESCRIPTION AND REMARKS:

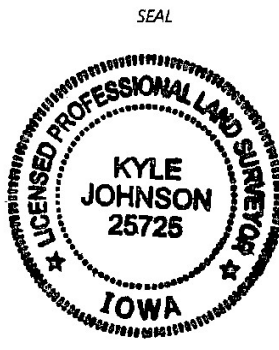
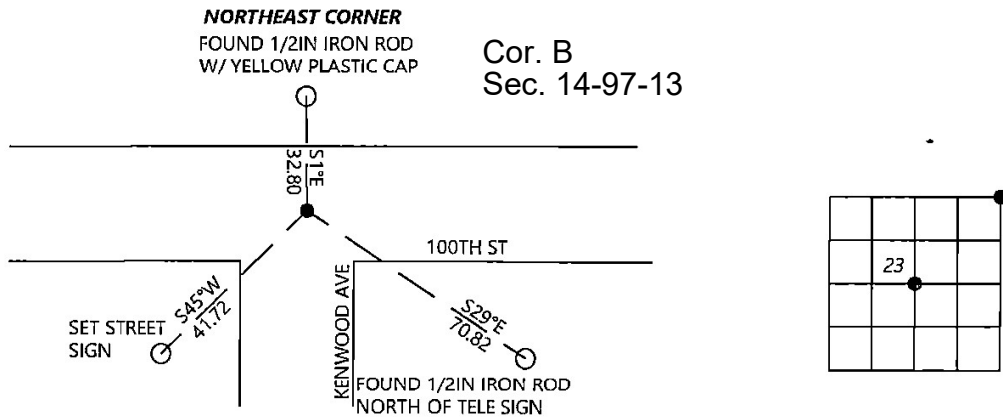
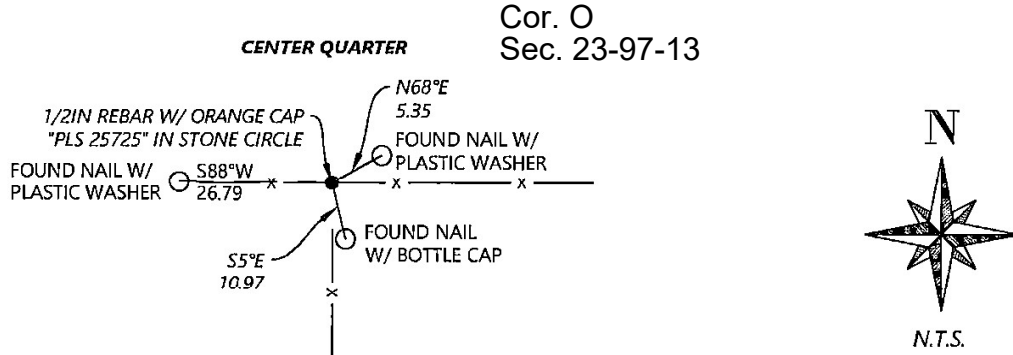
THIS DOCUMENT IS INTENDED TO REPLACE INSTRUMENT #2022-1902 AS THERE WAS AN ERROR IN THE CORNER IDENTIFICATION.

NORTHEAST CORNER: Westwood Professional Services found a 5/8" rebar 1.3' deep and 2 ties that do not agree with distances from 2005 record. Accepting corner location and set 1 tie. Filing corner record as there are changes to the reference ties of record.

CENTER QUARTER: Westwood Professional Services found a 1/2" rebar with cap LS25725 in the center of a stone circle and 3 ties per 1997 corner record. Distances also agree with 1996 and 2003 surveys. Accepting corner location. Filing corner record as there is a change in the monument of record.

PLAN - VIEW

(Show a minimum of three reference ties to durable physical objects, relevant monuments and physical conditions that will enable recovery of the corner.)



I hereby certify that this land surveying document was prepared and the related survey work was performed by me or under my direct personal supervision and that I am a duly licensed Land Surveyor under the laws of the state of Iowa.

Kyle Johnson 01/03/2023
 Signature Date
 Typed/Printed Name: Kyle A. Johnson
 License Number: 25726
 My license renewal date is December 31, 2024
 Pages or sheets covered by this seal: THIS SHEET

Corners to be Indexed

Corners	Section	Twp.	Range
NE	23	97	13
CQ	23	97	13