

Prepared by: Kyle A. Johnson Address: 1900 MEDICAL ARTS AVE S. SUITE 100 SARTELL, MN Phone: 1-888-937-5150

UNITED STATES PUBLIC LAND SURVEY CORNER CERTIFICATE FOR  
Land survey monuments situated in Section 23, Township 97 NORTH  
Range 13 WEST, of the Fifth Principal Meridian, CHICKASAW County, Iowa.  
Previously Recorded in \_\_\_\_\_ in County Recorder's Office.  
(Show reason for preparing this certificate, the evidence and detailed procedures used in establishing the corner positions and monumentation found or placed.)

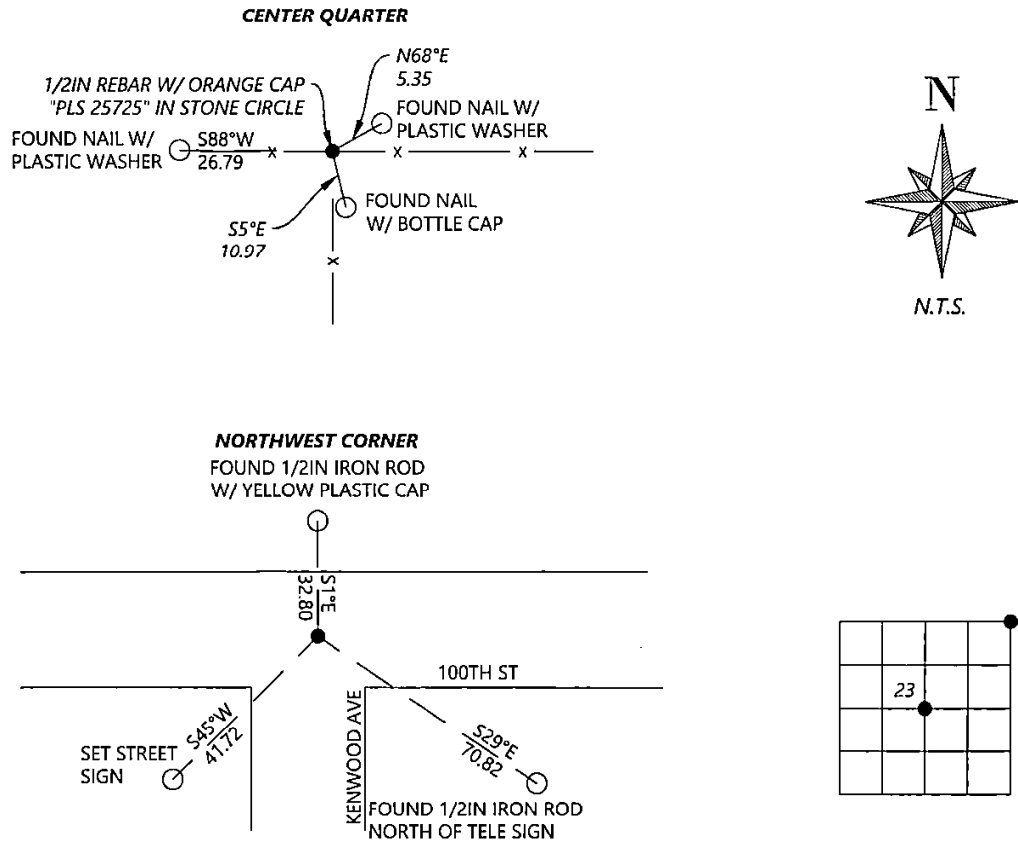
MONUMENT DESCRIPTION AND REMARKS:

**NORTHWEST CORNER:** Westwood Professional Services found a 5/8" rebar 1.3' deep and 2 ties that do not agree with distances from 2005 record. Accepting corner location and set 1 tie. Filing corner record as there are changes to the reference ties of record.

**CENTER QUARTER:** Westwood Professional Services found a 1/2" rebar with cap LS25725 in the center of a stone circle and 3 ties per 1997 corner record. Distances also agree with 1996 and 2003 surveys. Accepting corner location. Filing corner record as there is a change in the monument of record.

PLAN - VIEW

(Show a minimum of three reference ties to durable physical objects, relevant monuments and physical conditions that will enable recovery of the corner.)



Cor. B 14-97-13

<div>SEAL</div> <div><div><div></div><div>KYLE JOHNSON</div><div>25725</div><div>IOWA</div></div></div>	<div>I hereby certify that this land surveying document was prepared and the related survey work was performed by me or under my direct personal supervision and that I am a duly licensed Land Surveyor under the laws of the state of Iowa.</div> <div><div><div><div><div></div><div>Kyle A. Johnson</div></div><div>Signature</div></div><div><div><div>10/14/2022</div><div>Date</div></div></div></div><div>Typed/Printed Name: <u>Kyle A. Johnson</u></div><div>License Number: <u>25725</u></div><div>My license renewal date is December 31, <u>2022</u></div><div>Pages or sheets covered by this seal: <u>THIS SHEET</u></div></div>	<div>Corners to be Indexed</div> <table><tr><th>Corners</th><th>Section</th><th>Twp.</th><th>Range</th></tr><tr><td>NE</td><td>23</td><td>97</td><td>13</td></tr><tr><td>CQ</td><td>23</td><td>97</td><td>13</td></tr></table>	Corners	Section	Twp.	Range	NE	23	97	13	CQ	23	97	13
	Corners	Section	Twp.	Range										
	NE	23	97	13										
	CQ	23	97	13										