

UNITED STATES PUBLIC LAND SURVEY CORNER CERTIFICATE

Land Survey Monuments situated in Section 25, Township 97 North, Range 13 West, of the Fifth Principal Meridian, Chickasaw County, Iowa.

Previously recorded in N/A in County Recorder's Office.
 (book, page, document number, etc.)

(Show reason for preparing this certificate, the evidence and detailed procedures used in establishing the corner positions and monumentation found or placed.)

Monument Description and Remarks: SET 1/2" pin/cap 33' East of fence corner on fence line to west at East 1/4 corner.

AT SE corner SW 1/4 SE 1/4 found blue stone on fence line to north and 8' East of fence to South. Found stone tipped on side. Set

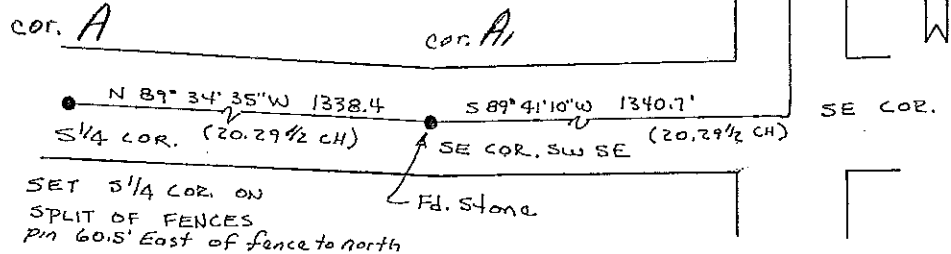
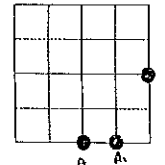
upright and at split of fence lines. Set 1/2" pipe with cap on top of point on stone. Set 1/2" pin/cap at South 1/4 cor. and at distance from stone found. Distance from information obtained PLAN - VIEW from County Eng. Office

(Show a minimum of three reference ties to durable physical objects, relevant monuments and physical conditions that will enable recovery of the corner)

✓ SE COR. SW 1/4 SE 1/4
 37.95' NW to "x" nails in brace post
 33.05' North to "x" nails in cor. post
 56.40' SW to " " " power pole

✓ South 1/4 COR.
 65.90' "x" Cor. post N.W.
 57.85' "x" nails in brace post NW
 31.15' "x" nails in wood post NW

✓ E 1/4 COR.
 33.50' west to "x" nails in wood post
 33.95' SW to "x" nails in wood post
 42.40' SW to "x" nails in wood post



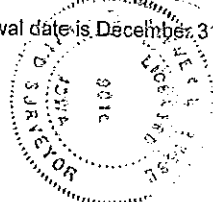
I hereby certify that the survey work was completed and this land surveying document was prepared by me or under my direct personal supervision and that I am a duly licensed land surveyor under the laws of the state of Iowa

Signature: Steve Busse
 Name typed or printed STEVE BUSSE

Date: 10/14/99 Reg. No. 9018

My license renewal date is December 31, 2000

SEAL



Corners	Section	Twp	Range
S 1/4 COR.	25	97	13 COR A
E 1/4 COR.	25	97	13 COR C
SE COR SW 1/4 SE 1/4	25	97	13 C1

*Placed in tie book
 10/20/99 SFM*