

2005-2439
11-4-2005

Section 24-97-13
As referred to in
Engr. Title Book

TeKIPPE ENGINEERING, P.C., 128 South Vine Street, West Union, Iowa 52176 Phone (563) 422-5131

UNITED STATES PUBLIC LAND SURVEY CORNER CERTIFICATE

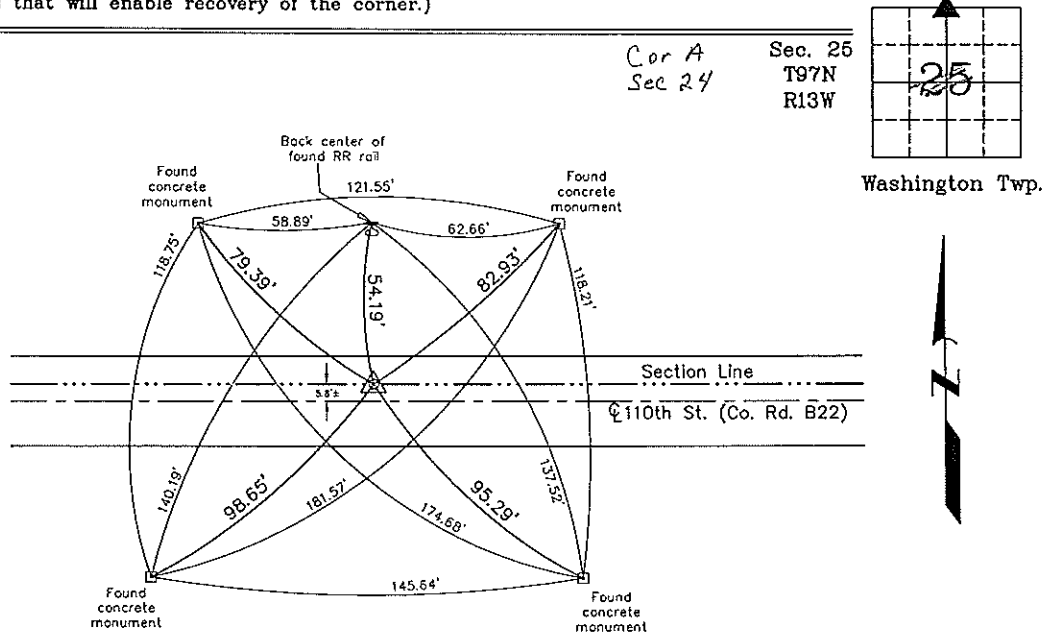
OF 24
25
Land Survey Monuments situated in Section 25, Township 97 North, Range 13 West of the Fifth Principal Meridian, CHICKASAW County, Iowa.
Previously recorded in none in County Recorder's Office.
(book, page, document number, etc.)

(Show reason for preparing this certificate, the evidence and detailed procedures used in establishing the corner positions and monumentation found or placed.)

Monument Description and Remarks: N 1/4 CORNER SECTION 25 T97N R13W: Found PK nail, 5.8'± North of centerline of 110th Street (County Road B22), with information obtained from the Chickasaw County Engineer's Office in Plat Book #1.

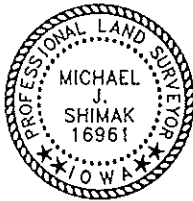
PLAN - VIEW

(Show a minimum of three reference ties to durable physical objects, relevant monuments and physical conditions that will enable recovery of the corner.)



Cor A
24-97-13

N 1/4 Corner Section 25 T97N R13W
Found PK nail, 5.8'± North of centerline of 110th Street
(County Road B22)



I hereby certify that this land surveying document was prepared and the related survey work was performed by me or under my direct personal supervision and that I am a duly licensed Land Surveyor under the laws of the State of Iowa.

Michael J. Shimak November 3, 2005
Michael J. Shimak Date

License number 16961
My license renewal date is December 31, 2005.
Sheets covered by this seal: Individual

List Corners to be Indexed			
Corners	Section	Twp.	Range
N 1/4	25	97N	13W

Project Number 05192.1S
FB. 46L PG. 53-54
X:\Section Corners\Sec. 25\25-97-13c.dwg