

Herold - Reicks Surveying, 10 East Main Street, New Hampton, IA 50659, Ph. 641-394-2725, Fax. 641-394-2718

UNITED STATES PUBLIC LAND SURVEY CORNER CERTIFICATE

Land Survey Monuments situated in Section ²⁵25, Township 97 North, Range 13 West of the Fifth Principal Meridian, Chickasaw County, Iowa. Previously recorded in Bk. 152-Deed, Pg. 450 in the County Recorder's office.

This certificate is being prepared in compliance with Iowa Code Chapter 355.11 because:



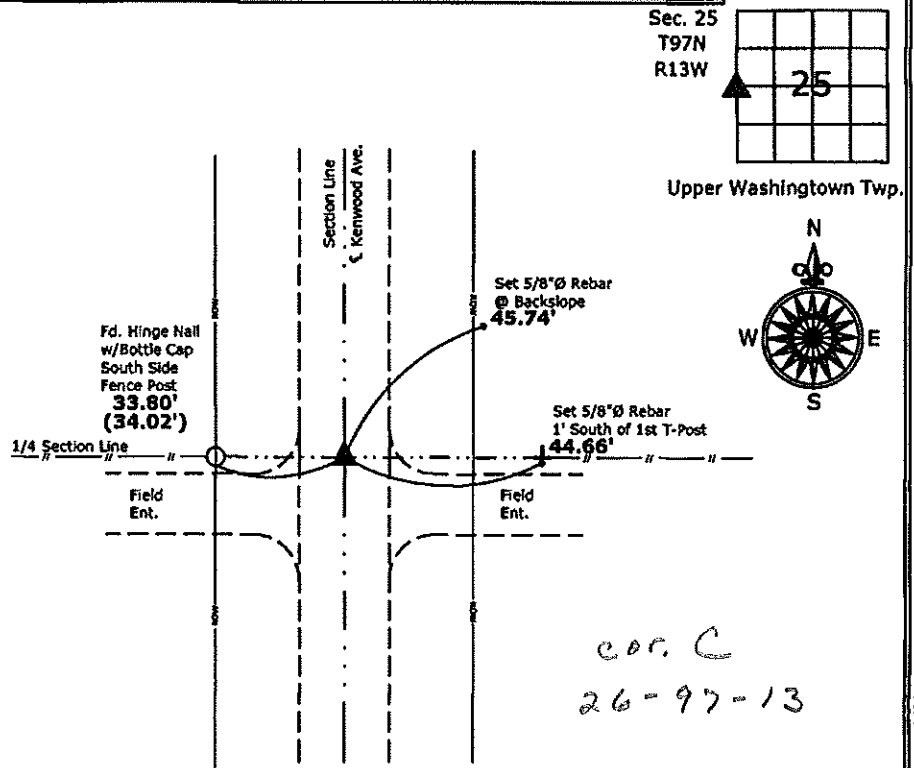
- There is no certificate on file for this corner.
- There are no longer three valid ties of record.
- There are changes to reference ties of record.
- There is change of monumentation of record.
- To clarify description of record monument (ties).

Monument Description and Remarks:

West 1/4 Corner: Found 3/4" square bar (bent) with information from the previous Section Corner certificate, replaced with 5/8"Ø rebar with 2"Ø aluminum PLS 19211 at straight portion location.

PLAN - VIEW

(Show a minimum of three reference ties to durable physical objects, relevant monuments and physical conditions that will enable recovery of the corner.)



cor. C
26-97-13

West 1/4 Corner Section 25-97-13
 Found 3/4" square bar (bent), Replaced with 5/8"Ø rebar w/2"Ø aluminum cap
 PLS 19211 at straight portion location



I hereby certify that this land surveying document was prepared and the related survey work was performed by me or under my direct personal supervision and that I am a duly licensed Land Surveyor under the laws of the State of Iowa.
Kirk D. Reicks 12-8-10
 Kirk D. Reicks Date:
 License number 19211
 My license renewal date is December 31, 2010.
 Sheets covered by this seal: Individual sheet only

List Corners to be Indexed			
Corners	Section	Twp.	Range
W 1/4	25	97	13
Project Number: 2010-166			
FB: Chickasaw County 2, Pg. 56			

UNITED STATES PUBLIC LAND SURVEY CORNER CERTIFICATE

OF

Land Survey Monuments situated in Section 26, Township 97, Range 13, of the Fifth Principal Meridian, Chickasaw County, Iowa. Previously recorded in _____ in County Recorder's Office.

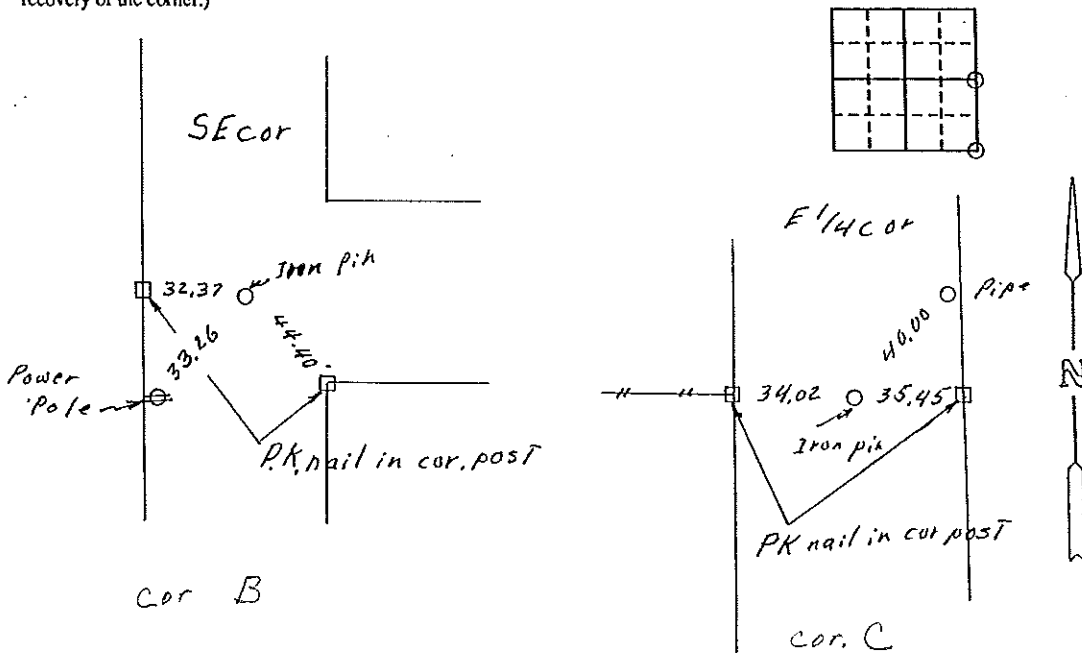
(book, page, document number, etc.)

(Show reason for preparing this certificate, the evidence and detailed procedures used in establishing the corner positions and monumentation found or placed.)

Monument Description and Remarks: Found iron pin in both corners

PLAN - VIEW

(Show a minimum of three reference ties to durable physical objects, relevant monuments and physical conditions that will enable recovery of the corner.)



I hereby certify that the survey work was completed and this certificate was prepared by me or under my direct personal supervision and that I am a duly registered land surveyor under the laws of the state of Iowa.

Signature: Robert L. Haylock
 Name typed or printed: Robert L. Haylock
 Date: 8-14-93 Reg. No. 5680

SEAL



Corners	Section	Twp	Range
SE cor	26	97	13
E 1/4 cor	26	97	13

*Cor B + C of 26-9
 Placed in the
 Book 8/20/93*