

2003 AUG 13 AM 8 52

CINDY MESSERSMITH
 COUNTY RECORDER

TEKIPPE ENGINEERING, P.C., 128 South Vine Street, West Union, Iowa 52176 Phone (563) 422-5131

UNITED STATES PUBLIC LAND SURVEY CORNER CERTIFICATE

OF

Land Survey Monuments situated in Section 23, Township 97 North, Range 13 West of the Fifth Principal Meridian, CHICKASAW County, Iowa. Previously recorded in none in County Recorder's Office. (book, page, document number, etc.)

(Show reason for preparing this certificate, the evidence and detailed procedures used in establishing the corner positions and monumentation found or placed.)

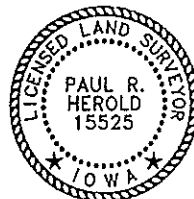
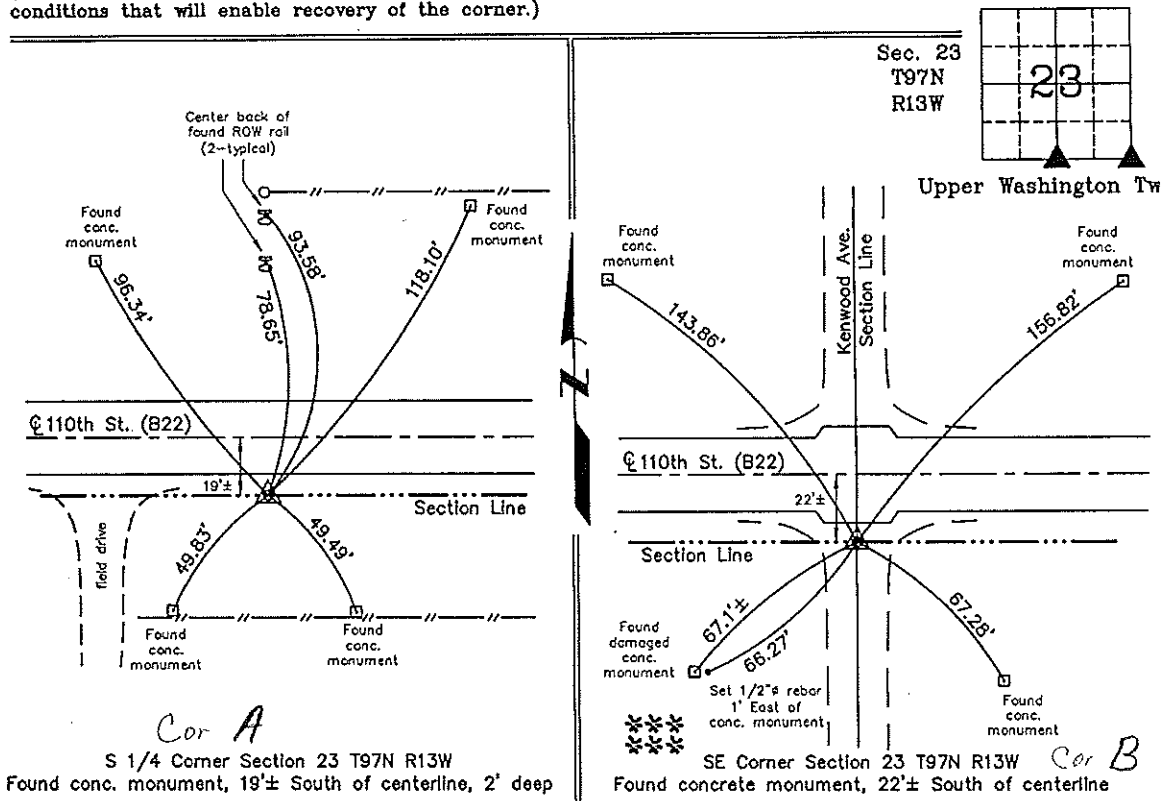
Monument Description and Remarks: S 1/4 Corner Section 23 T97N R13W: Found concrete monument, 2' deep 19'± South of centerline, with information obtained from the Chickasaw County Engineer's Office in Field Book Upper Washington Twp. Corner Ties, Corner 'A'.

SE Corner Section 23 T97N R13W: Found concrete monument, 22'± South of centerline, with information obtained from the Chickasaw County Engineer's Office in Field Book Upper Washington Twp. Corner Ties, Corner 'B'.

PLAN - VIEW

Project Number 03148.IS
 FB. 46K PG. 16-17

(Show a minimum of three reference ties to durable physical objects, relevant monuments and physical conditions that will enable recovery of the corner.)



I hereby certify that this land surveying document was prepared and the related survey work was performed by me or under my direct personal supervision and that I am a duly licensed Land Surveyor under the laws of the State of Iowa.

Paul R. Harold 8-4-03
 Paul R. Harold Date

License number 15525
 My license renewal date is December 31, 2004.
 Sheets covered by this seal: Individual

List Corners to be Indexed			
Corners	Section	Twp.	Range
S 1/4	23	97N	13W
SE	23	97N	13W

Filed 8-28-03

X:\Section Corners\Sec. 23\23-97-13wy.dwg

County Engineer's Copy