

UNITED STATES PUBLIC LAND SURVEY CORNER CERTIFICATE

OF

Land Survey Monuments situated in Section 27, Township 97 North, Range 13 West, of the Fifth Principal Meridian, CHICKASAW County, Iowa. Previously recorded in NONE in County Recorder's Office.
(book, page, document number, etc.)

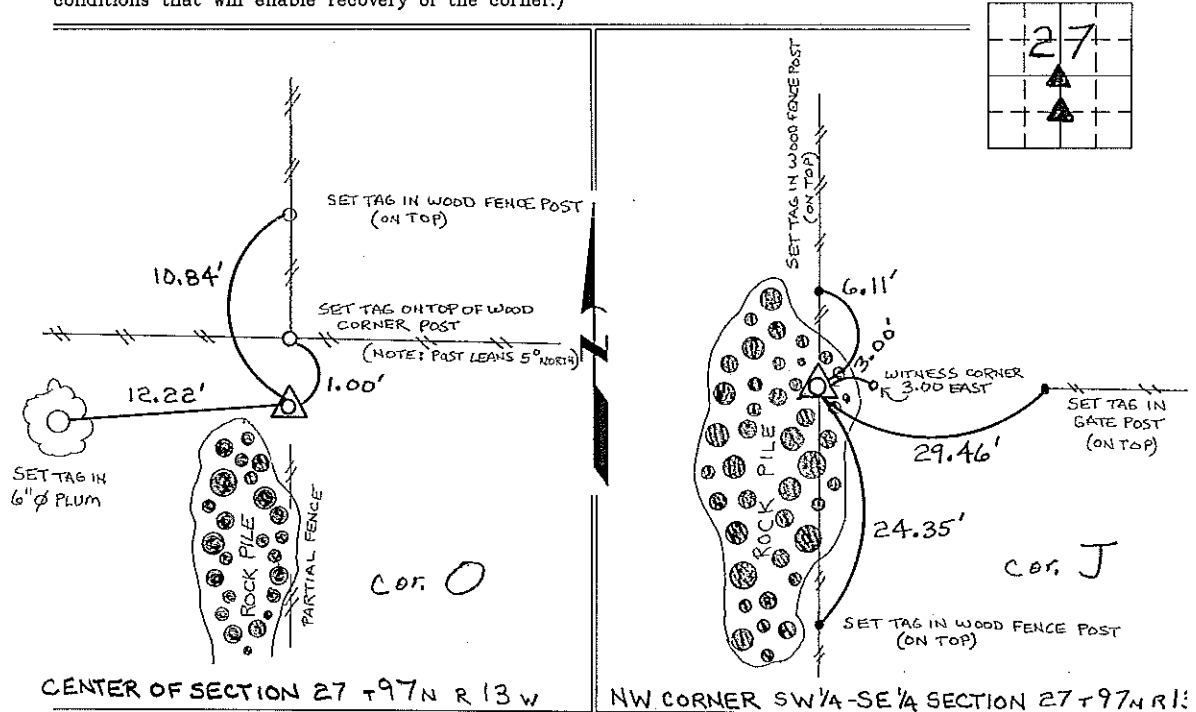
(Show reason for preparing this certificate, the evidence and detailed procedures used in establishing the corner positions and monumentation found or placed.)

Monument Description and Remarks: CENTER OF SECTION 27 T 97N R 13W: FOUND 5/8" Ø IRON PIN, FROM INFORMATION OBTAINED FROM THE CHICKASAW COUNTY ENGINEERS OFFICE.

NW CORNER SW 1/4 - SE 1/4 SECTION 27 T 97N R 13W: CORNER COULD NOT BE SET, COMPUTED POSITION EQUADISTANT AND ON LINE BETWEEN CENTER AND S 1/4 CORNER, THEN SET WITNESS CORNER (1/2" Ø REBAR W/ CAP 7060) 3.00 EAST ON 1/4 - 1/4 SECTION LINE, WHICH WAS ESTABLISHED EQUADISTANT AND ON LINE BETWEEN E 1/4 CORNER AND SE CORNER.

PLAN - VIEW

(Show a minimum of three reference ties to durable physical objects, relevant monuments and physical conditions that will enable recovery of the corner.)



CENTER OF SECTION 27 T 97N R 13 W

NW CORNER SW 1/4 - SE 1/4 SECTION 27 T 97N R 13 W

I hereby certify that the survey work was completed and this certificate was prepared by me or under my direct personal supervision and that I am a duly registered land surveyor under the laws of the state of Iowa.

Signature: Lyle G. TeKippe
 Lyle G. TeKippe

Date: 12-26-95 Reg. No. 7060
 My Registration Renewal Date is December 31, 1998

Seal



List Corners to be Indexed			
Corners	Section	Twp.	Range
CENTER	27	97N	13 W
NW-SW-SE	27	97N	13 W

Placed in the Book 1/23/96