

UNITED STATES PUBLIC LAND SURVEY CORNER CERTIFICATE

SLSI 9-90

OF 20  
 Land Survey Monuments situated in Section 28, Township 97, Range 13,  
 of the Fifth Principal Meridian, CHICKASAW County, Iowa.  
 Previously recorded in NONE in County Recorder's Office.  
(book, page, document number, etc.)

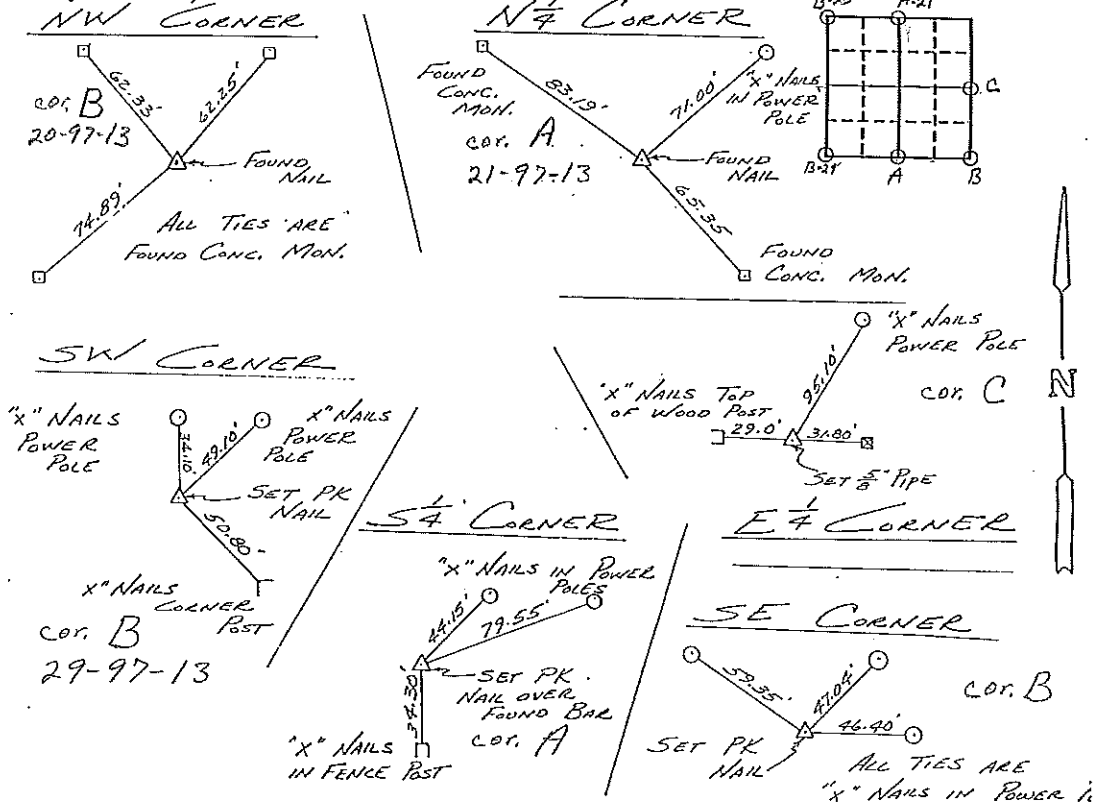
(Show reason for preparing this certificate, the evidence and detailed procedures used in establishing the corner positions and monumentation found or placed.)

Monument Description and Remarks: SEE SKETCH

Section 20-97-13  
 As referred to in  
 Engr. Tie Book.

PLAN - VIEW

(Show a minimum of three reference ties to durable physical objects, relevant monuments and physical conditions that will enable recovery of the corner.)



I hereby certify that the survey work was completed and this certificate was prepared by me or under my direct personal supervision and that I am a duly registered land surveyor under the laws of the state of Iowa.

Signature: L. P. Erdman  
 Name typed or printed: L. P. ERDMAN

Date: 2-15-93 Reg. No. 2886

SEAL

Corners	List Corners to be Indexed		
	Section	Twp	Range
✓ NW	28	97	13 B-1
✓ N 1/4	28	97	13 A-2
✓ SW	28	97	13 C-1
✓ S 1/4	28	97	13 A-2
✓ SE	28	97	13 B-2
✓ E 1/4	28	97	13 C-1

Placed in the B  
 2/22/93