

DOCUMENT No. **03893** FILED FOR RECORD THE 3rd DAY OF November 1999 AT 9:53 STATE OF IOWA, CHICKASAW COUNTY.  
 RECORDING FEE \$ 6.00 By Cindy Messer-Smith Recorder  
 TRANSFER FEE - \$ \_\_\_\_\_ O'CLOCK A M. BOOK 173 PAGE 446 By Shirley M. Payne Deputy

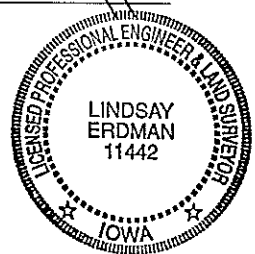
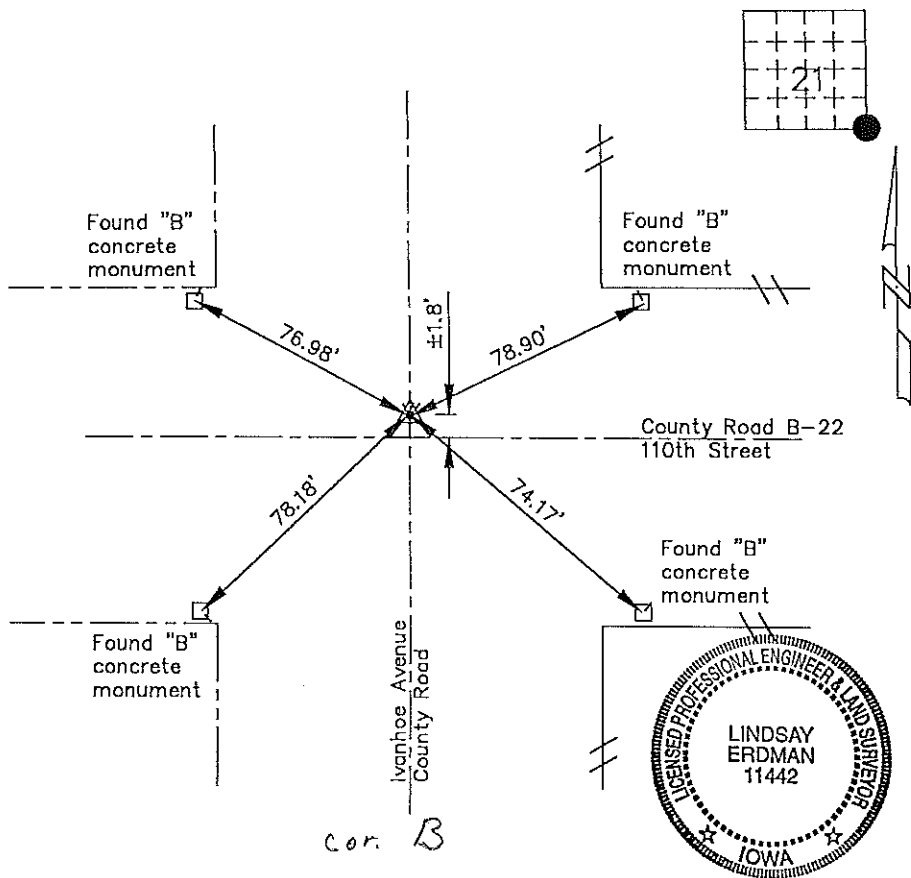
Prepared by: Erdman Engineering, P.C. 708 Commerce Drive, P.O. Box 246, Decorah, Iowa 52101  
 Phone (319)382-4194, Fax (319)382-3623

### United States Public Land Survey Corner Certificate of

Land Survey Monuments situated in Section 21 Township 97 Range 13 of the Fifth Principle Meridian,  
 Chickasaw County, Iowa. Previously recorded in does not apply in County Recorders Office.

Monument Description and Remarks: This certificate is prepared in accordance with Section 355.11  
 of the 1995 Code of Iowa. No previous certificate has been filed for this corner location. Based on  
 Chickasaw County Engineer's Reference Ties we found four type "B" concrete monuments used as  
 tie markers. From these ties we found a P.K. nail that matches the description of the monument  
 being used as the SE Corner of Section 21, Township 97 North, Range 13 West.  
 The P.K. nail is  $\pm 1.8'$  north of the centerline of County Road B-22 (110th Street) and at the  
 approximate centerline of Ivanhoe Avenue.

### Plan-View



I hereby certify that the survey work was completed  
 and this certificate was prepared by me or under my  
 direct supervision and that I am a duly registered  
 land surveyor under the laws of the State of Iowa.

Signature Lindsay Erdman  
 (Lindsay Erdman, P.E. and L.S.)

Date: 4/1/99 Reg. No. 11442

My license renewal date is December 31, 2000.

List Corners to be Indexed			
Corners	Section	Twp.	Range
SE	21	97	13

Corner B 29-97-13

Placed In Tie Book 11/8/99

m:\c\veg\act\chick\69099\69099.s