

TEKIPPE ENGINEERING, P.C., 128 South Vine Street, West Union, Iowa 52175 Phone (563) 422-6131

UNITED STATES PUBLIC LAND SURVEY CORNER CERTIFICATE

OF 20

Land Survey Monuments situated in Section 29, Township 97 North, Range 13 West of the Fifth Principal Meridian, Chickasaw County, Iowa.  
 Previously recorded in (1) Bk. 154, Pg. 496 (2) Doc. #2004-0373 in County Recorder's Office.  
 (book page, document number, etc.)

(Show reason for preparing this certificate, the evidence and detailed procedures used in establishing the corner positions and monumentation found or placed.)

Monument Description and Remarks: (1) N1/4 Corner of Section 29-T97N-R13W:

Found rusted off nail in hole of H.M.A. roadway matching two remaining ties of record. Reestablished monument with 1/2" rebar w/2" aluminum cap LS 7060. Updating certificate because one tie of record was missing and existing monumentation was not adequate.

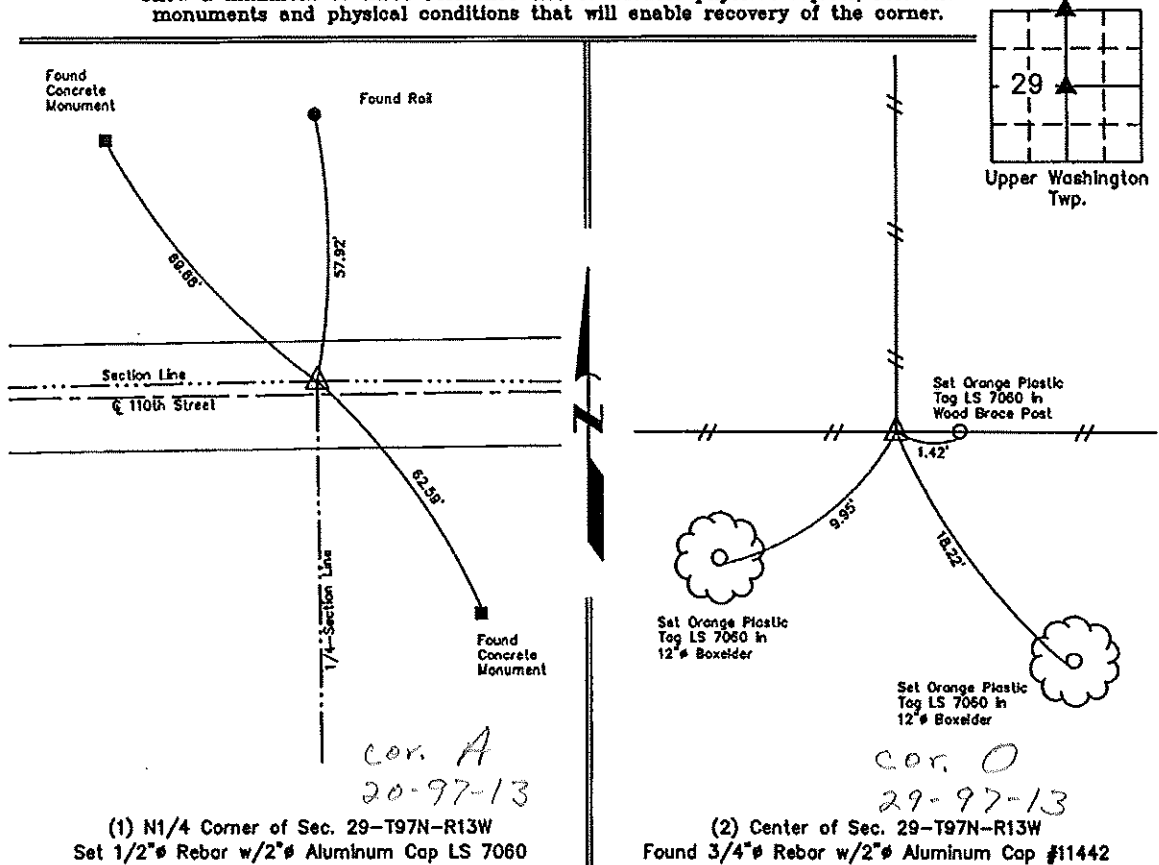
(2) Center of Section 29-T97N-R13W:

Found 3/4" rebar with 2" aluminum cap #11442. Updating certificate because all ties of record had been grown over, so set three new ties.

PLAN VIEW

Project Number 121019.LS  
 Field Book: 46M, Pages 75-76

Show a minimum of three reference ties to durable physical objects, relevant monuments and physical conditions that will enable recovery of the corner.



(1) N1/4 Corner of Sec. 29-T97N-R13W  
 Set 1/2" Rebar w/2" Aluminum Cap LS 7060

(2) Center of Sec. 29-T97N-R13W  
 Found 3/4" Rebar w/2" Aluminum Cap #11442

	I hereby certify that this land surveying document was prepared and the related survey work was performed by me or under my direct personal supervision and that I am a duly licensed Land Surveyor under the laws of the State of Iowa.	<b>List Corners to be Indexed</b>											
	Lyle G. Tekippe, P.E. & P.L.S. License Number 7060 My license renewal date is December 31, 2012. Sheets covered by this seal: This Sheet Only	<table border="1"> <thead> <tr> <th>Corners</th> <th>Section</th> <th>Twp.</th> <th>Range</th> </tr> </thead> <tbody> <tr> <td>N1/4</td> <td>29</td> <td>97N</td> <td>13W</td> </tr> <tr> <td>Center of</td> <td>29</td> <td>97N</td> <td>13W</td> </tr> </tbody> </table>	Corners	Section	Twp.	Range	N1/4	29	97N	13W	Center of	29	97N
Corners	Section	Twp.	Range										
N1/4	29	97N	13W										
Center of	29	97N	13W										

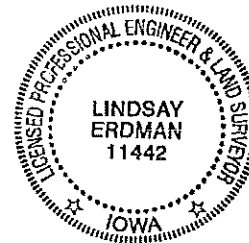
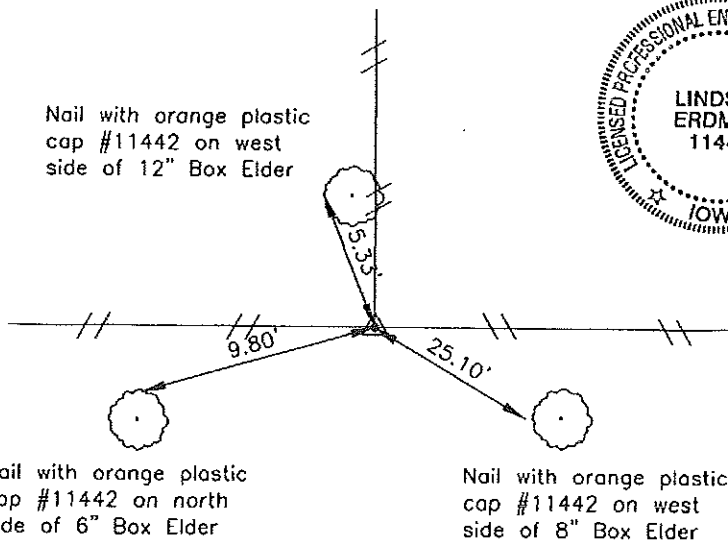
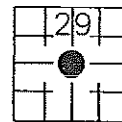
Prepared by: Erdman Engineering, P.C. 708 Commerce Drive, P.O. Box 246 Decorah, Iowa 52101, (563)382-4194

United States Public Land Survey Corner Certificate  
 of

Land Survey Monuments situated in Section 29, Township 97, Range 13 West of the 5th Principal Meridian in Chickasaw County, Iowa. Previously recorded in does not apply in the county Recorder's Office.

Monument Description and Remarks: This certificate is prepared in accordance with Section 193C of the Code of Iowa. No previous certificate has been filed for this corner location. We found no record of the Center of Section 29 being set. We found no evidence of a monument in the field other than a fence corner with fence line running north, east and west. We found the N ¼ Corner, SE Corner, NE Corner, S ¼ Corner and W ¼ Corner. We computed the location of the E ¼ Corner based on previous survey work. From these monuments we computed the theoretical location for the Center of Section 29. This location is 31' south and 27' east of the fence corner. We accepted the fence corner as the Center of Section 29, Township 97 North, Range 13 West, and set a ¾" diameter steel bar with 2" aluminum cap #11442 on the south side of the wood post.

Plan-View



Nail with orange plastic cap #11442 on west side of 12" Box Elder

Nail with orange plastic cap #11442 on north side of 6" Box Elder

Nail with orange plastic cap #11442 on west side of 8" Box Elder

Cor. O

I hereby certify that the survey work was completed and this certificate was prepared by me or under my direct supervision and that I am a duly registered land surveyor under the laws of the State of Iowa.

Signature Lindsay Erdman  
 Lindsay Erdman, P.E. and P.L.S.

Date: 2/10/04 Reg. No. 11442

My license renewal date is December 31, 2004

Corner(s) to be Indexed

Corner	Section	Township	Range
C.S.	29	97	13