

TEKIPPE ENGINEERING, P.C., 128 South Vine Street, West Union, Iowa 52175 Phone (563) 422-5131

UNITED STATES PUBLIC LAND SURVEY CORNER CERTIFICATE

OF 20

Land Survey Monuments situated in Section 29, Township 97 North, Range 13 West of the Fifth Principal Meridian, Chickasaw County, Iowa.  
 Previously recorded in (1) Bk. 154, Pg. 496 (2) Doc. #2004-0373 in County Recorder's Office.  
 (book page, document number, etc.)

(Show reason for preparing this certificate, the evidence and detailed procedures used in establishing the corner positions and monumentation found or placed.)

Monument Description and Remarks: (1) N1/4 Corner of Section 29-T97N-R13W:

Found rusted off nail in hole of H.M.A. roadway matching two remaining ties of record. Reestablished monument with 1/2" rebar w/2" aluminum cap LS 7060. Updating certificate because one tie of record was missing and existing monumentation was not adequate.

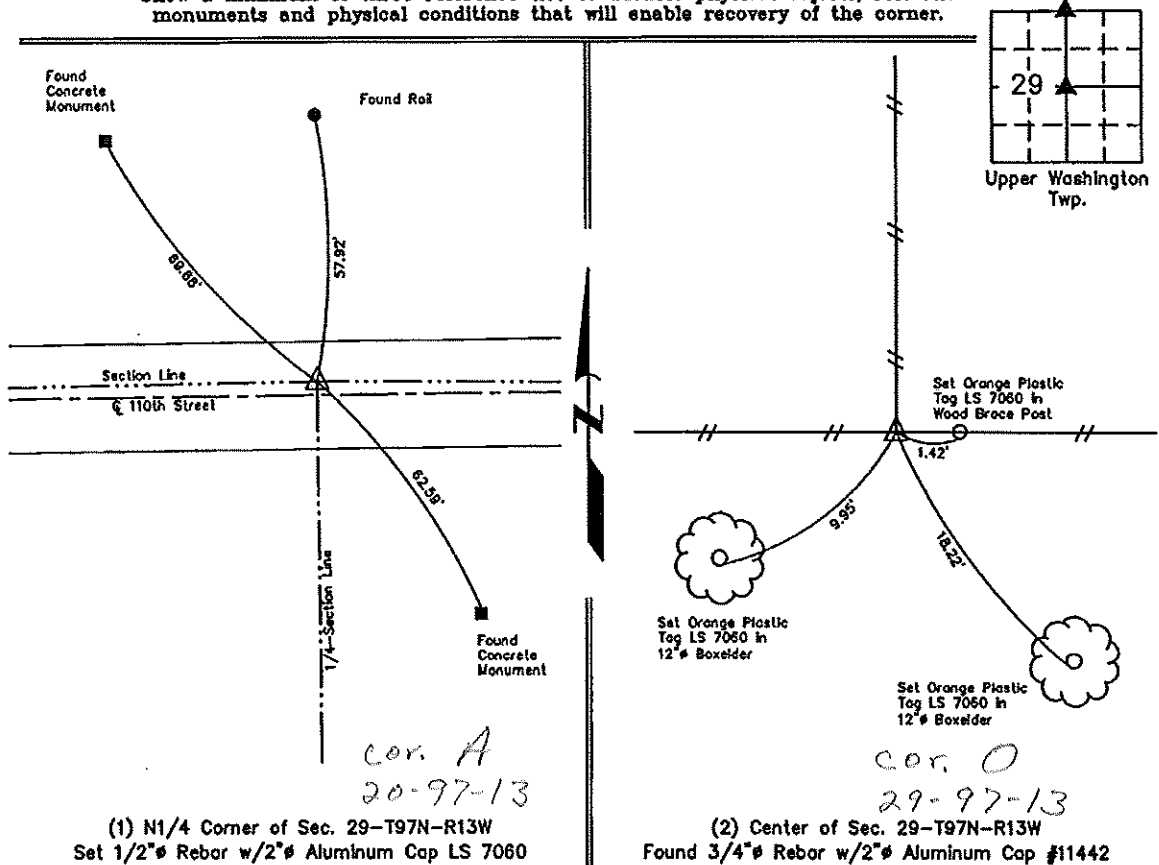
(2) Center of Section 29-T97N-R13W:

Found 3/4" rebar with 2" aluminum cap #11442. Updating certificate because all ties of record had been grown over, so set three new ties.

PLAN VIEW

Project Number 121019.LS  
 Field Book: 46M, Pages 75-76

Show a minimum of three reference ties to durable physical objects, relevant monuments and physical conditions that will enable recovery of the corner.



	I hereby certify that this land surveying document was prepared and the related survey work was performed by me or under my direct personal supervision and that I am a duly licensed Land Surveyor under the laws of the State of Iowa.	<b>List Corners to be Indexed</b>											
	Lyle G. Tekippe, P.E. & P.L.S. License Number 7060 My license renewal date is December 31, 2012. Sheets covered by this seal: This Sheet Only	<table border="1"> <thead> <tr> <th>Corners</th> <th>Section</th> <th>Twp.</th> <th>Range</th> </tr> </thead> <tbody> <tr> <td>N1/4</td> <td>29</td> <td>97N</td> <td>13W</td> </tr> <tr> <td>Center of</td> <td>29</td> <td>97N</td> <td>13W</td> </tr> </tbody> </table>	Corners	Section	Twp.	Range	N1/4	29	97N	13W	Center of	29	97N
Corners	Section	Twp.	Range										
N1/4	29	97N	13W										
Center of	29	97N	13W										

UNITED STATES PUBLIC LAND SURVEY CORNER CERTIFICATE

OF 20

Land Survey Monuments situated in Section 29, Township 97 NORTH, Range 13 WEST, of the Fifth Principal Meridian, CHICKASAW County, Iowa. Previously recorded in Deeds Book 150, Pg. 373 in County Recorder's Office.

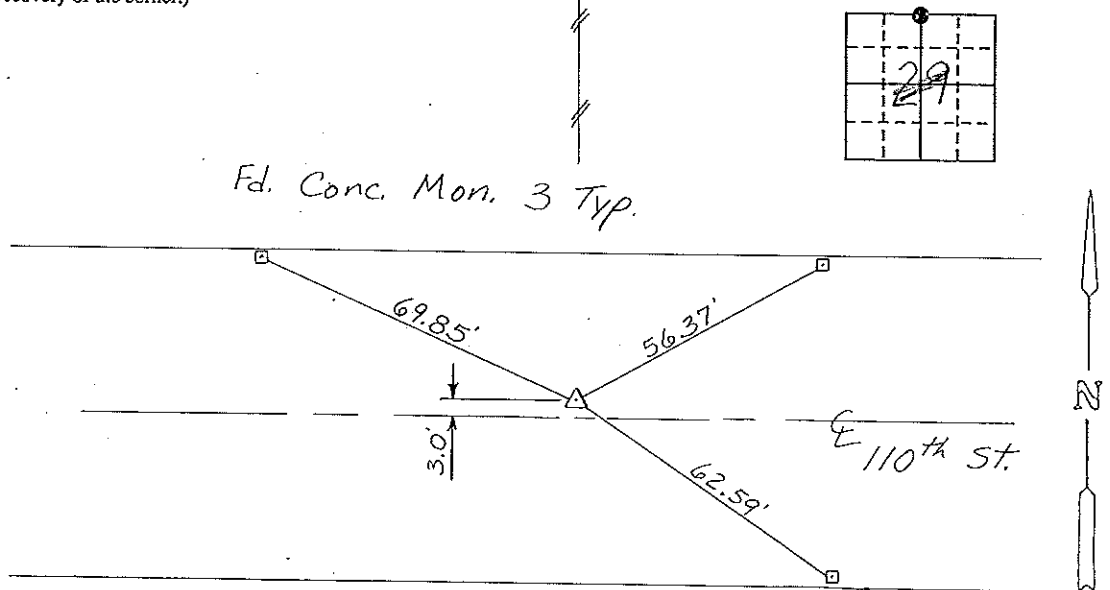
(Show reason for preparing this certificate, the evidence and detailed procedures used in establishing the corner positions and monumentation found or placed.)

Monument Description and Remarks: N 1/4 CORNER, SECTION 29-T97N-R13W: Set PK Nail from Ties & Mag. Reading. Previously recorded cert. did not show dist. to conc. monuments.

Section 20-97-13 As referred to in Engr Tie Book

PLAN - VIEW

(Show a minimum of three reference ties to durable physical objects, relevant monuments and physical conditions that will enable recovery of the corner.)



Fd. Conc. Mon. 3 Typ.

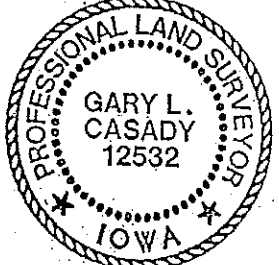
Cor. A 20-97-13

N 1/4 Corner, Section 29-T97N-R13W

I hereby certify that the survey work was completed and this certificate was prepared by me or under my direct personal supervision and that I am a duly registered land surveyor under the laws of the state of Iowa.

Signature: Gary L. Casady Name typed or printed: Gary L. Casady

Date: 4-26-94 Reg. No. 12532 My Registration Expires December 31, 1994



SEAL

Corners	List Corners to be Indexed		
	Section	Twp	Range
N 1/4	29	97N	13W
Corner A	20-97-13		

Placed in tie book 5/24/94 JPM

154-496