

Prepared by S. Return to Herold - Reicks Surveying, 18 East Main Street, New Hampton, IA 50659, Ph. 641-394-2725

UNITED STATES PUBLIC LAND SURVEY CORNER CERTIFICATE

Land Survey Monuments situated in Section 30, Township 97 North, Range 13 West of the Fifth Principal Meridian, Chickasaw County, Iowa. Previously recorded in Bk. 164, Pg. 161 in the County Recorder's office.

This certificate is being prepared in compliance with Iowa Code Chapter 355.11 because:

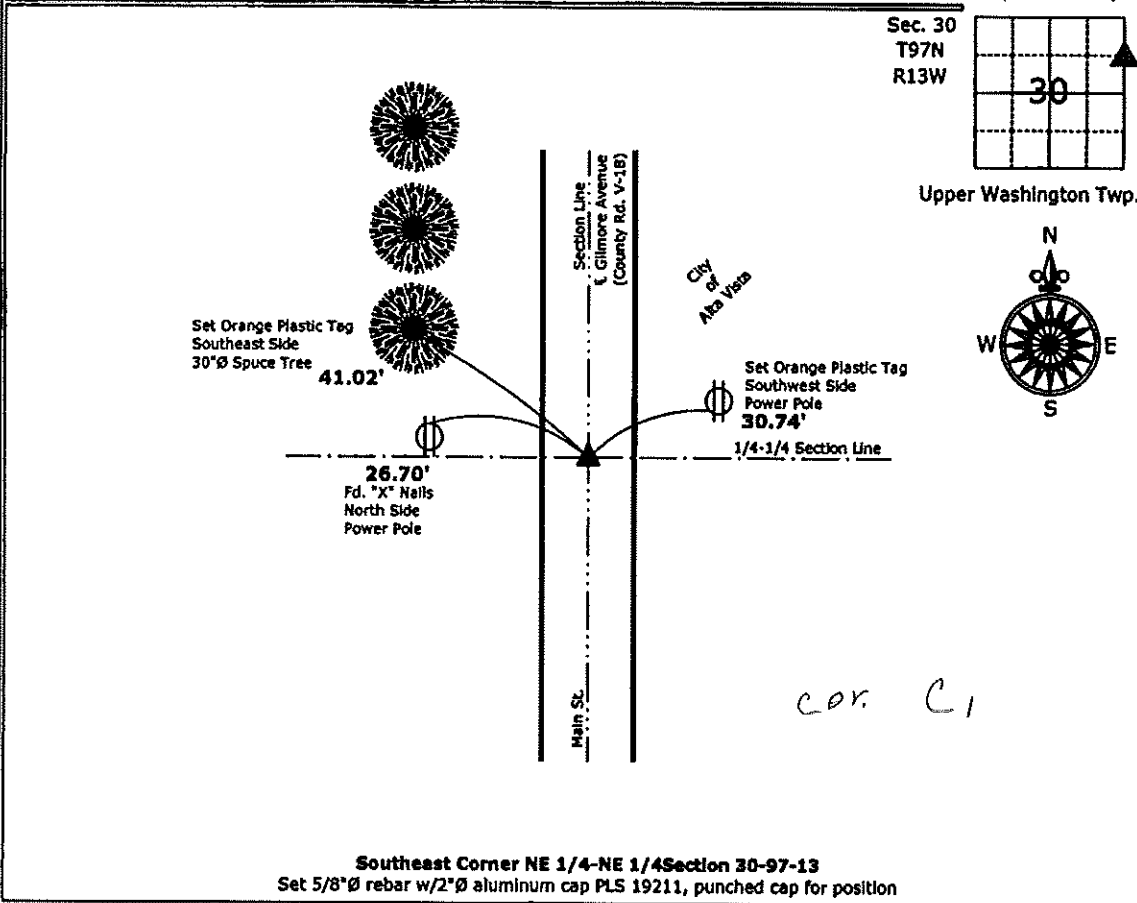
- There is no certificate on file for this corner.
- There are no longer three valid ties of record.
- There are changes to reference ties of record.
- There is change of monumentation of record.
- To clarify description of record monument (ties).

Monument Description and Remarks:

Southeast Corner NE 1/4-NE 1/4: Could not locate cut "X" per previous Corner Certificate. I staked a position of the SE-NE-NE midway and online between the Northeast Corner and the East 1/4 Corner and it landed in the centerline joint of the P.C.C. paving, drilled 5/8"Ø rebar w/2"Ø aluminum cap PLS 19211 in the P.C.C. paving and punched 0.05' West of the Centerline of cap for position.

PLAN - VIEW

(Show a minimum of three reference ties to durable physical objects, relevant monuments and physical conditions that will enable recovery of the corner.)



Southeast Corner NE 1/4-NE 1/4 Section 30-97-13
 Set 5/8"Ø rebar w/2"Ø aluminum cap PLS 19211, punched cap for position



I hereby certify that this land surveying document was prepared and the related survey work was performed by me or under my direct personal supervision and that I am a duly licensed Land Surveyor under the laws of the State of Iowa.

Kirk D. Reicks 3-17-11
 Kirk D. Reicks Date:
 License number 19211
 My license renewal date is December 31, 2012.
 Sheets covered by this seal: Individual sheet only

List Corners to be Indexed			
Corners	Section	Twp.	Range
SE-NE-NE	30	97	13
Project Number: 2011-008			
FB: Alta Vista 1, Pgs. 66-67			

Section 30-97-13
 is referred to in
 Engr. Tie Book

Prepared by: Erdman Engineering P.C. 708 Commerce Drive, P.O. Box 246, Decora Iowa, 52101
 Phone (319)382-4194, Fax (319)382-3623

United States Public Land Survey Corner Certificate

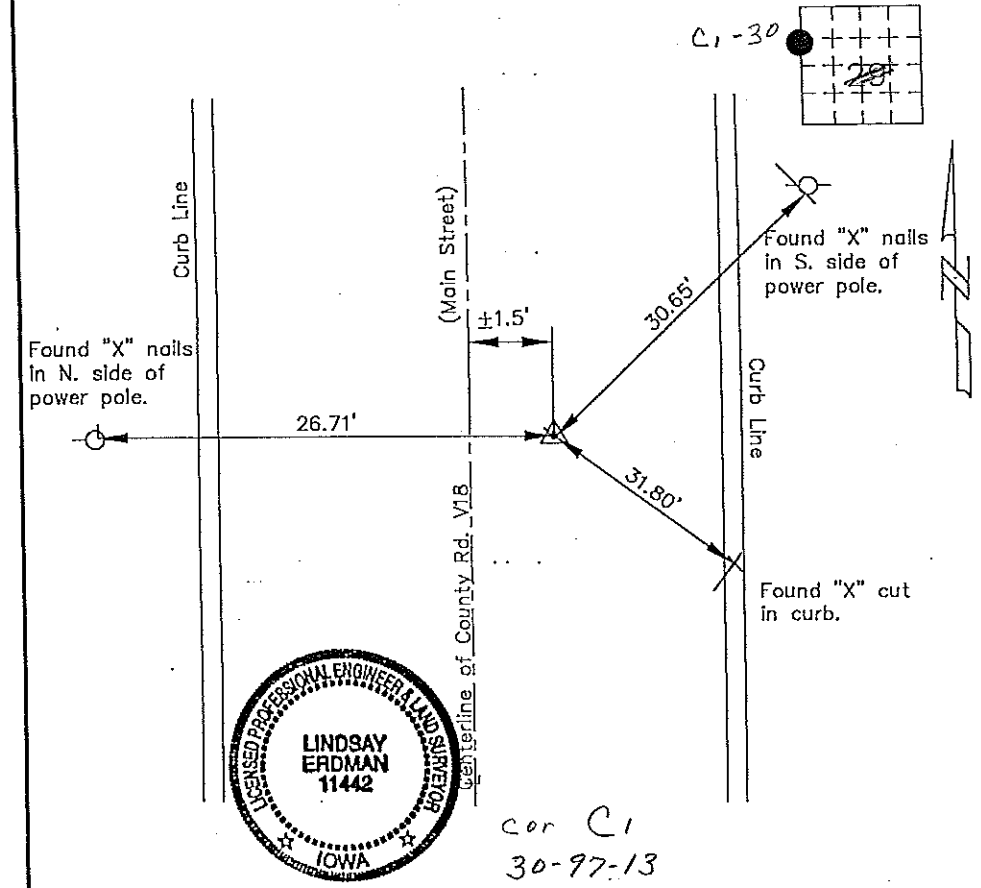
30 of

Land Survey Monuments situated in Section 29 Township 97 Range 13 of the Fifth Principle Meridian, Chickasaw County, Iowa. Previously recorded in does not apply in County Recorders Office.

(Show reason for preparing this certificate, the evidence and detailed procedures used in establishing the corner positions and monumentation found or placed.)

Monument Description and Remarks: This certificate is prepared in accordance with Section 355.11 of the 1995 Code of Iowa. No previous certificate has been filed for this corner location. Based on County Engineer's Reference Ties we found one set of "X" nails, one "X" cut in the curb and one nail in a power pole, all used as tie markers. We did not find any evidence of the corner remaining. Based on this we cut an "X" in the paving from the tie markers at the WNW 1/8 corner of Section 29-97-13.

Plan-View
 (Show a minimum of three reference ties to durable physical objects, relevant monuments and physical conditions that will enable recovery of the corner.)



I hereby certify that the survey work was completed and this certificate was prepared by me or under by direct supervision and that I am a duly registered land surveyor under the laws of the State of Iowa.

Signature: [Signature]
 Lindsay Erdman, P.E. and L.S.

Date: 5/13/97 Reg. No. 11442

My license renewal date is December 31, 1998

List Corners to be Indexed			
Corners	Section	Twp.	Range
WNW 1/8	29	97	13

In Book 6-25-01

ts7-wr97030 5-2-97