

Section 25-97-14
 As referred to in
 Engr. Fee Book

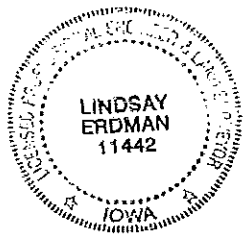
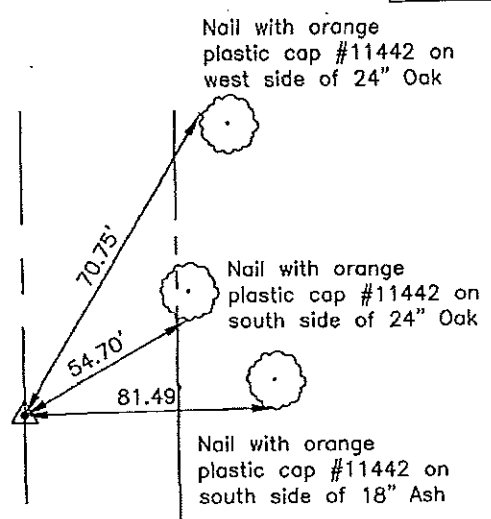
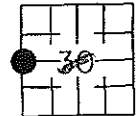
Prepared by: Erdman Engineering, P.C., 708 Commerce Drive, P.O. Box 246, Decorah, Iowa 52101 (563) 382-4194

United States Public Land Survey Corner Certificate
 of 25

Land Survey Monuments situated in Section 30, Township 97, Range 13 West of the 5th Principal Meridian in Chickasaw County, Iowa. Previously recorded in does not apply in the county Recorder's Office.

Monument Description and Remarks: This certificate is prepared in accordance with Section 193C of the Code of Iowa. No previous certificate has been filed for this corner location. Chickasaw County Engineer's Reference ties show that a iron pin had been set in line with section corner and in line with $\frac{1}{4}$ line fence to west. We made a magnetic locator search of a $\pm 20'$ diameter area at the approximate center line of the county road and in line with the fence line to the west. We did not find the iron pin as it appears to have been graded out. We found the SW Corner and Set the NW corner from ties. From these monuments we set a $\frac{1}{2}$ " diameter steel bar with 1 $\frac{1}{2}$ " aluminum cap #11442 on line and equidistant between the NW corner and the SW as the W $\frac{1}{4}$ Corner of Section 30, Township 97 North, Range 13 West. The monument is located a the approximate centerline of the county road and in line with the fence line to the west.

Plan-View



cor C
 25-97-14

I hereby certify that this land surveying document was prepared and the related survey work was performed by me or under my direct personal supervision and that I am a duly licensed Land Surveyor under the laws of the State of Iowa.

Signature: Lindsay Erdman
 Lindsay Erdman, P.E. and P.L.S. Iowa License Number 11442

Date: 10/19/07

My license renewal date is December 31, 2008

Corner(s) to be Indexed

Corner	Section	Township	Range
W 1/4	30	97	13