

Prepared by & Return to Harold - Reicks Surveying, 10 East Main Street, New Hampton, IA 50658, Ph. 641-391-2725

### UNITED STATES PUBLIC LAND SURVEY CORNER CERTIFICATE

Land Survey Monuments situated in Section 30, Township 97 North, Range 13 West of the Fifth Principal Meridian, Chickasaw County, Iowa. 1.) & 2.) Not previously recorded in the County Recorder's office.

This certificate is being prepared in compliance with Iowa Code Chapter 355.11 because:

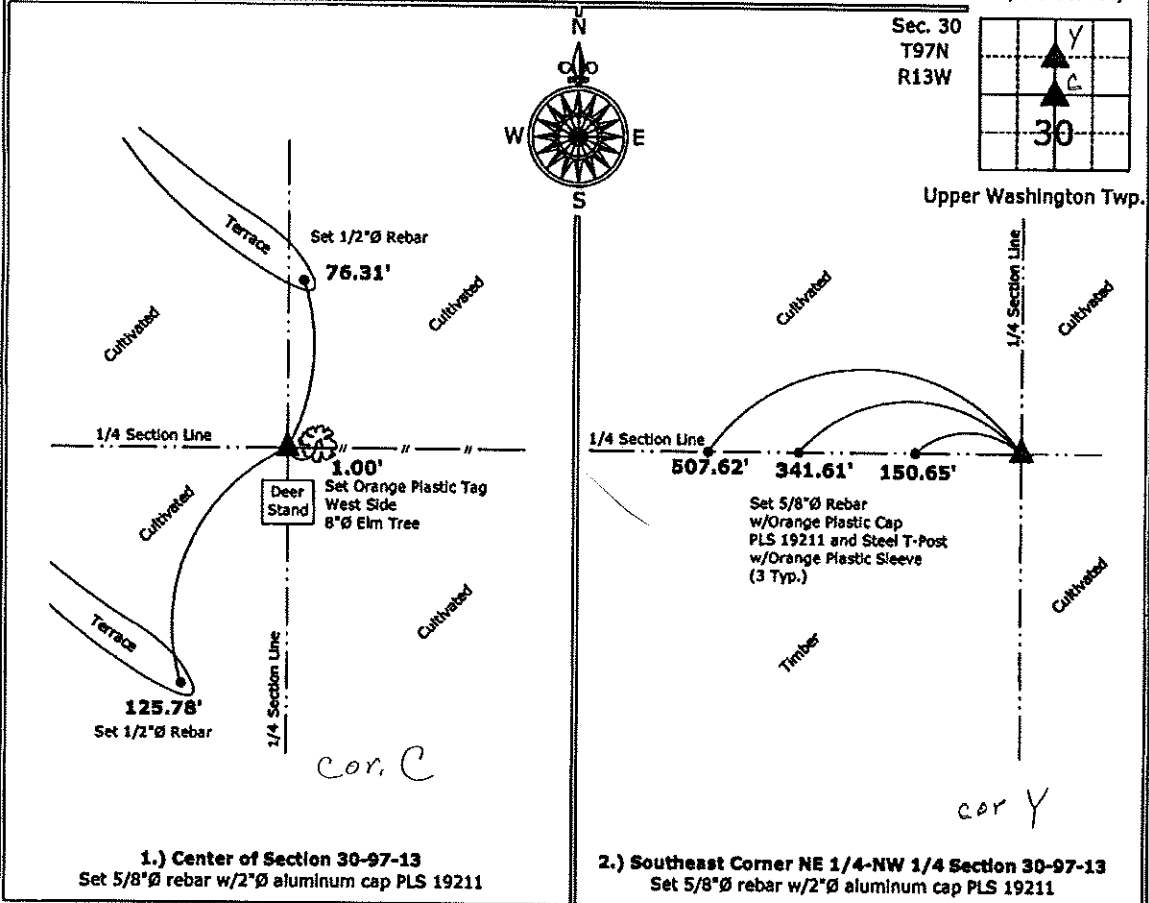
- 1.) & 2.) There are no certificates on file for these corners.
- There are no longer three valid ties of record.
- There are changes to reference ties of record.
- There is change of monumentation of record.
- To clarify description of record monument (ties).

Monument Description and Remarks:

- 1.) **Center of Section:** Set 5/8"Ø rebar with 2"Ø aluminum cap PLS 19211 at the Intersection of Quarter Section Lines.
- 2.) **Southeast Corner NE 1/4-NW 1/4:** Set 5/8"Ø rebar with 2"Ø aluminum cap PLS 19211 at the intersection of the North-South Quarter Section Line and the South line of Lot 1 of 13.

#### PLAN - VIEW

(Show a minimum of three reference ties to durable physical objects, relevant monuments and physical conditions that will enable recovery of the corner.)



I hereby certify that this land surveying document was prepared and the related survey work was performed by me or under my direct personal supervision and that I am a duly licensed Land Surveyor under the laws of the State of Iowa.

*Kirk D. Reicks* 3-17-11  
 Kirk D. Reicks Date:  
 License number 19211  
 My license renewal date is December 31, 2012.  
 Sheets covered by this seal: Individual sheet only

List Corners to be Indexed			
Corners	Section	Twp.	Range
CTR	30	97	13
SE-NE-NW	30	97	13

Project Number: 2011-008  
 FB: Chickasaw County 2, Pgs. 66-67