

Section 30-97-13
As referred to in
Engr. Tie Book

UNITED STATES PUBLIC LAND SURVEY CORNER CERTIFICATE

OF 30

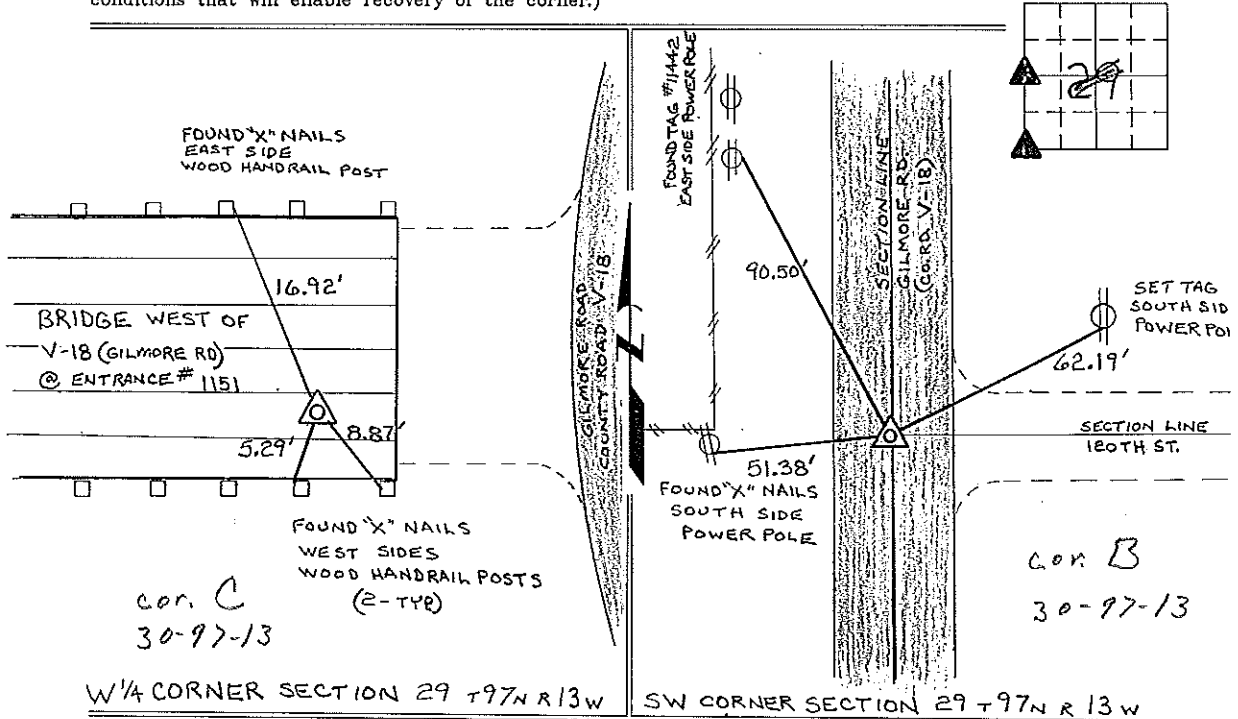
Land Survey Monuments situated in Section 29, Township 97 North, Range 13 West, of the Fifth Principal Meridian, CHICKASAW County, Iowa. Previously recorded in NONE in County Recorder's Office.
(book, page, document number, etc.)

(Show reason for preparing this certificate, the evidence and detailed procedures used in establishing the corner positions and monumentation found or placed.)

Monument Description and Remarks: W 1/4 CORNER SECTION 29 T 97N R 13W: SET PK NAIL AT RECORD POSITION, BASED ON A SURVEY AND PLAT MADE BY STEVEN L. BUSSE, RECORDED MAY 4, 1993, AND A SURVEY AND PLAT MADE BY L.P. ERDMAN, DATED NOVEMBER 5, 1992, RECORDED FEBRUARY 8, 1995, AFTER LOCKING INTO THE 2 SURVEYS IT WAS OBVIOUS THEY BOTH USED THE SAME CORNER, HOWEVER NEITHER SURVEYOR FILED A SECTION CORNER CERTIFICATE.
SW CORNER SECTION 29 T 97N R 13W: FOUND CEMENT NAIL AS SHOWN ON A SURVEY AND PLAT MADE BY L.P. ERDMAN, RECORDED FEBRUARY 8, 1995, NO PREVIOUS SECTION CORNER CERTIFICATE ON FILE.

PLAN - VIEW

(Show a minimum of three reference ties to durable physical objects, relevant monuments and physical conditions that will enable recovery of the corner.)



W 1/4 CORNER SECTION 29 T 97N R 13W

SW CORNER SECTION 29 T 97N R 13W

I hereby certify that the survey work was completed and this certificate was prepared by me or under my direct personal supervision and that I am a duly registered land surveyor under the laws of the state of Iowa.

Signature Lyle G. TeKippe
Lyle G. TeKippe
Date: 11-18-96 Reg. No. 7060
My Registration Renewal Date is December 31, 1996

Seal



List Corners to be Indexed			
Corners	Section	Twp.	Range
W 1/4	29	97N	13W
COR C 30-97-13			
SW	29	97N	13W
COR B-30-97-13			

Placed in tie Book
12/13/96