

Prepared by & Return to: Herold - Reicks Surveying, 10 East Main Street, New Hampton, IA 50659, Ph. 641-394-2725

UNITED STATES PUBLIC LAND SURVEY CORNER CERTIFICATE

Land Survey Monuments situated in Section ²⁴19, Township ¹³97 North, Range 12 West of the Fifth Principal Meridian, Chickasaw County, Iowa, 1., 2.) Previously unrecorded in the County Recorder's office.

This certificate is being prepared in compliance with Iowa Code Chapter 355.11 because:

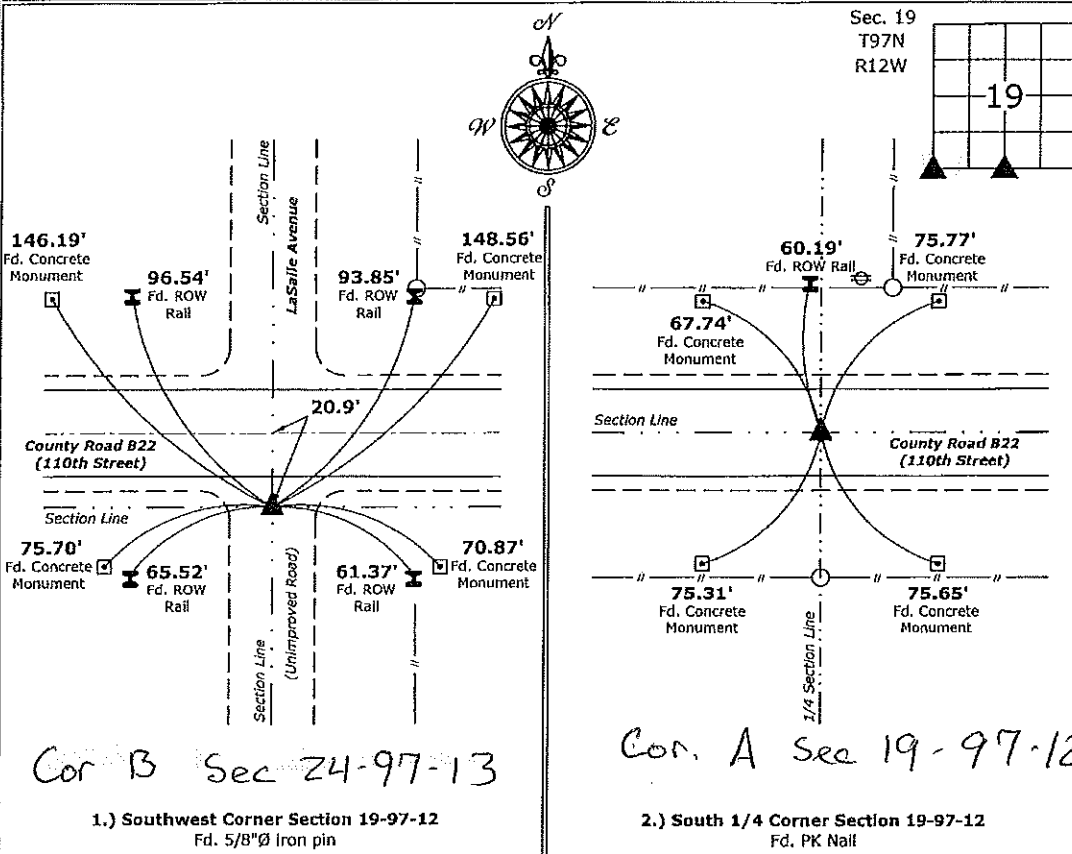
- 1 & 2 There is no certificate on file for this corner.
 There are no longer three valid ties of record.
 There are changes to reference ties of record.
 There is change of monumentation of record.
 To clarify description of record monument (ties).

Monument Description and Remarks:

- 1.) Southwest Corner: Fd. 5/8"Ø iron pin with information obtained from the County Engineers office.
- 2.) South 1/4 Corner: Fd. PK Nail with information obtained from the County Engineers office.

PLAN - VIEW

(Show a minimum of three reference ties to durable physical objects, relevant monuments and physical conditions that will enable recovery of the corner.)



I hereby certify that this land surveying document was prepared and the related survey work was performed by me or under my direct personal supervision and that I am a duly licensed Land Surveyor under the laws of the State of Iowa.
Kirk D. Reicks 6-17-16
 Kirk D. Reicks Date:
 License number 19211
 My license renewal date is December 31, 2016.
 Sheets covered by this seal: Individual sheet only

List Corners to be Indexed			
Corners	Section	Twp.	Range
SW	19	97	12
S 1/4	19	97	12

Project Number: 2016-023
 FB: Chickasaw 7, Pgs. 65-67

Section 24-97-14
 As referred to in
 Engr. Tie Book

Chickasaw Co. Recorder
 Cindy Messersmith
Fee Book 2007-2121
 10/31/2007 @0951AM
 SCC SEC COR CERT # Pages: 1
 Book: Page: \$7.00
 Total Fees:

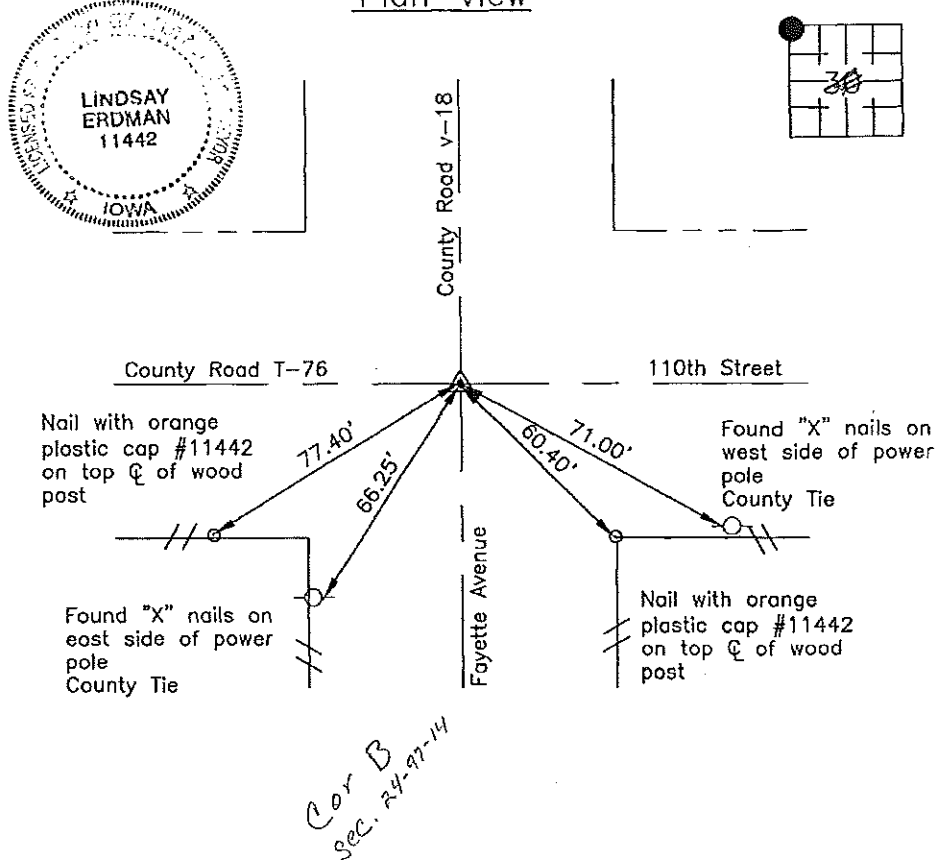
Prepared by: Erdman Engineering, P.C., 708 Commerce Drive, P.O. Box 246, Decatur, Iowa 52101 (563) 382-4194

United States Public Land Survey Corner Certificate

of ²⁴/₃₀, Township ¹⁴/₉₇, Range ¹⁴/₁₃ West of the 5th Principal Meridian in Chickasaw County, Iowa. Previously recorded in does not apply in the county Recorder's Office.

Monument Description and Remarks: This certificate is prepared in accordance with Section 193C of the Code of Iowa. No previous certificate has been filed for this corner location. Based on Chickasaw County Engineer's Reference Ties we found two power poles with "X" nails that have been used previously as tie markers. From these ties we made a visual search for the nail that had been previously set in the asphalt mat in 1971. We did not find the nail due to the road being paved recently. From the remaining ties we cut an "X" in the concrete paving as the NW corner of Section 30, Township 97 North, Range 13 West. The monument is located 1.1' north and 0.5' west of the centerline-centerline intersection of the county roads.

Plan-View



I hereby certify that this land surveying document was prepared and the related survey work was performed by me or under my direct personal supervision and that I am a duly licensed Land Surveyor under the laws of the State of Iowa.

Signature: *Lindsay Erdman*
 Lindsay Erdman, P.E. and P.L.S. Iowa License Number 11442

Date: 10/15/07

My license renewal date is December 31, 2008

Corner(s) to be Indexed

Corner	Section	Township	Range
NW	30	97	13