

Prepared by & Return to Harold - Reicks Surveying, 13 East Main Street, New Hampton, IA 50659, Ph. 641-394-2725

### UNITED STATES PUBLIC LAND SURVEY CORNER CERTIFICATE

Land Survey Monuments situated in Section 30, Township 97 North, Range 13 West of the Fifth Principal Meridian, Chickasaw County, Iowa. 1.) & 2.) Not previously recorded in the County Recorder's office.

This certificate is being prepared in compliance with Iowa Code Chapter 355.11 because:

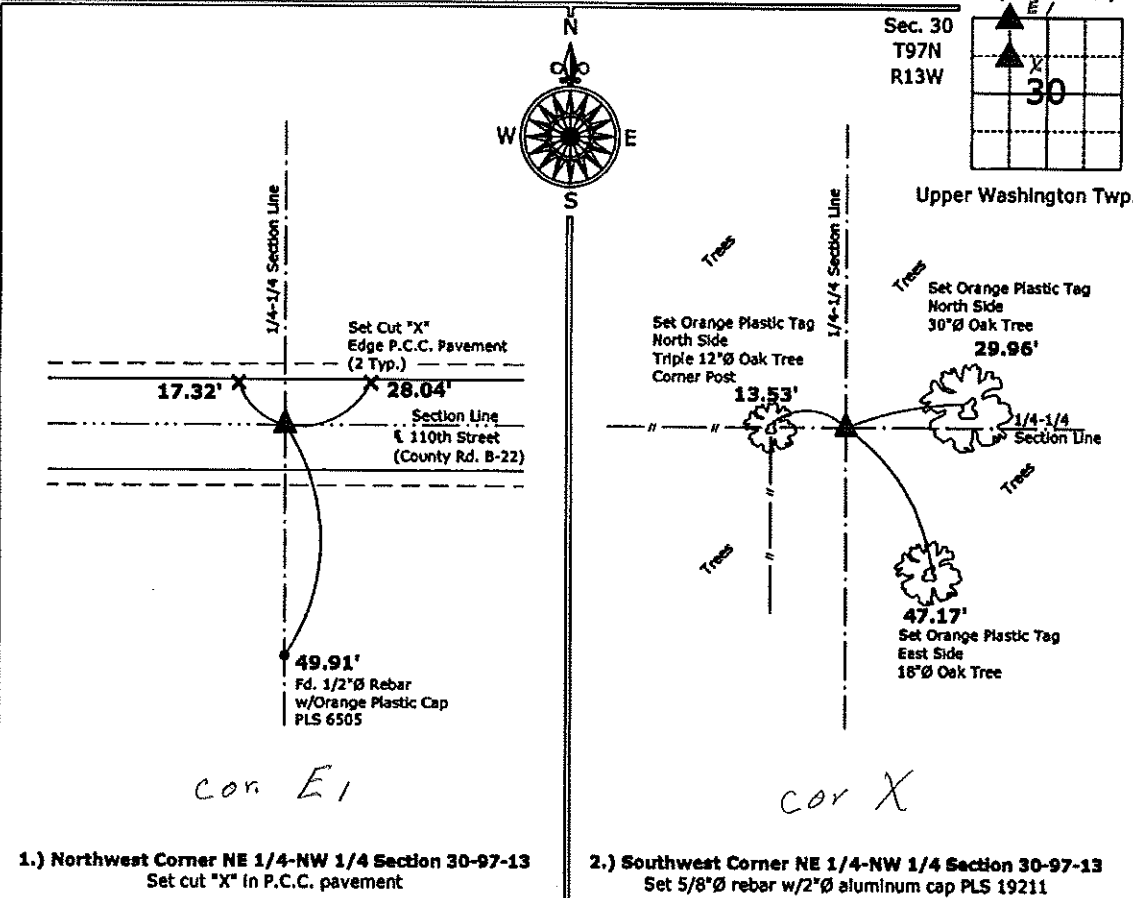
- 1.) & 2.)  There are no certificates on file for these corners.  
 There are no longer three valid ties of record.  
 There are changes to reference ties of record.  
 There is change of monumentation of record.  
 To clarify description of record monument (ties).

**Monument Description and Remarks:**

- Northwest Corner NE 1/4-NW 1/4:** Set cut "X" in P.C.C. pavement at the intersection of a line between the Northwest and the North 1/4 Corner and the West line of the West 3/8 (15 acres) of the NE 1/4-NW 1/4.
- Southwest Corner NE 1/4-NW 1/4:** Set 5/8"Ø rebar with 2"Ø aluminum cap PLS 19211 by using single proportion methods of the previously monumented Southeast Corner of the West 3/8 (15 acres) of the NE 1/4-NW 1/4 and the Southeast Corner of the NE 1/4-NW 1/4.

**PLAN - VIEW**

(Show a minimum of three reference ties to durable physical objects, relevant monuments and physical conditions that will enable recovery of the corner.)



I hereby certify that this land surveying document was prepared and the related survey work was performed by me or under my direct personal supervision and that I am a duly licensed Land Surveyor under the laws of the State of Iowa.  
*Kirk D. Reicks* 3-17-11  
 Kirk D. Reicks Date:  
 License number 19211  
 My license renewal date is December 31, 2012.  
 Sheets covered by this seal: Individual sheet only

List Corners to be Indexed			
Corners	Section	Twp.	Range
NW-NE-NW	30	97	13
SW-NE-NW	30	97	13

Project Number: 2011-008  
 FB: Chickasaw County 2, Pgs. 66-67

File: S:\Projects\2011\2011-008\dwg\2011-008-SEC.dwg, 3/15/2011 04:33:27