

Prepared by & Return to: Herold - Reicks Surveying, 10 East Main Street, New Hampton, IA 50659, Ph. 641-394-2725

UNITED STATES PUBLIC LAND SURVEY CORNER CERTIFICATE

Land Survey Monuments situated in Section ²⁴19, Township ¹³97 North, Range 12 West of the Fifth Principal Meridian, Chickasaw County, Iowa. 1., 2.) Previously unrecorded in the County Recorder's office.

This certificate is being prepared in compliance with Iowa Code Chapter 355.11 because:

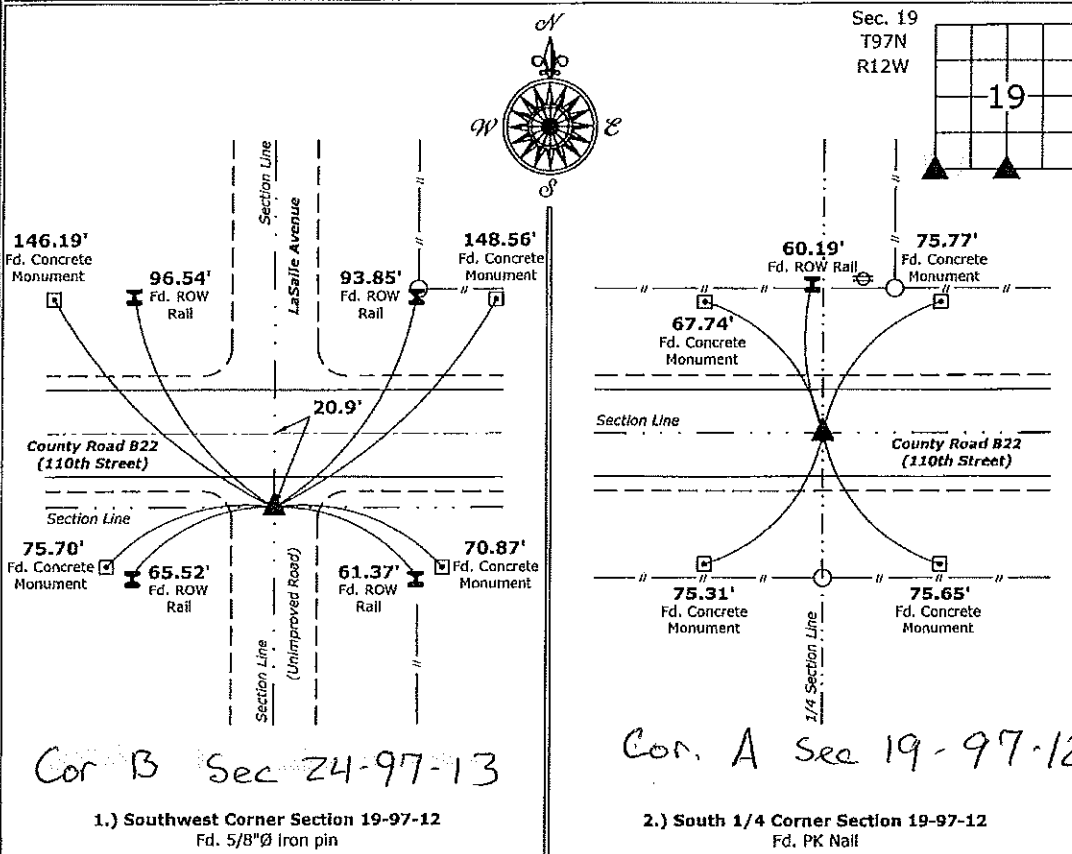
- 1 & 2 There is no certificate on file for this corner.
 There are no longer three valid ties of record.
 There are changes to reference ties of record.
 There is change of monumentation of record.
 To clarify description of record monument (ties).

Monument Description and Remarks:

- 1.) Southwest Corner: Fd. 5/8"Ø iron pin with information obtained from the County Engineers office.
- 2.) South 1/4 Corner: Fd. PK Nail with information obtained from the County Engineers office.

PLAN - VIEW

(Show a minimum of three reference ties to durable physical objects, relevant monuments and physical conditions that will enable recovery of the corner.)



I hereby certify that this land surveying document was prepared and the related survey work was performed by me or under my direct personal supervision and that I am a duly licensed Land Surveyor under the laws of the State of Iowa.
Kirk D. Reicks 6-17-16
 Kirk D. Reicks Date:
 License number 19211
 My license renewal date is December 31, 2016.
 Sheets covered by this seal: Individual sheet only

List Corners to be Indexed			
Corners	Section	Twp.	Range
SW	19	97	12
S 1/4	19	97	12

Project Number: 2016-023
 FB: Chickasaw 7, Pgs. 65-67

File: S:\CSD Projects\County Control Systems\CHICKASAW\CHICK-5.dwg, 6/13/2016 8:50:00 AM

Section 19-97-13
 As referred to in
 Engr. Tie Book

Chickasaw Co. Recorder
 Cindy Messersmith
Fee Book 2007-2120
 10/31/2007 0950AM
 SCC SEC COR CERT # Pages: 1
 Book: Page:
 Total Fees: \$7.00

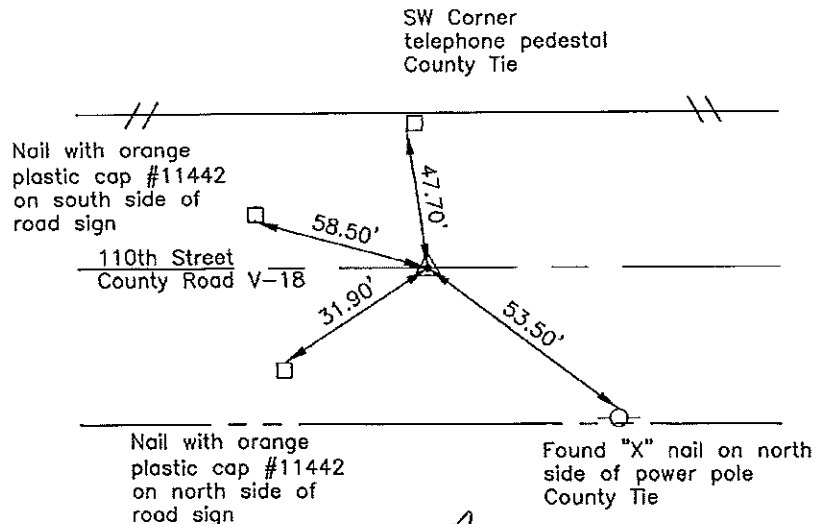
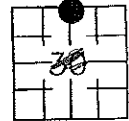
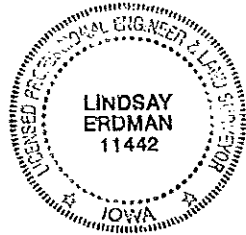
Prepared by: Erdman Engineering, P.C., 708 Commerce Drive, P.O. Box 246, Decorah, Iowa 52101 (563) 382-4194

United States Public Land Survey Corner Certificate
 of 19

Land Survey Monuments situated in Section 30, Township 97, Range 13 West of the 5th Principal Meridian in Chickasaw County, Iowa. Previously recorded in does not apply in the county Recorder's Office.

Monument Description and Remarks: This certificate is prepared in accordance with Section 193C of the Code of Iowa. No previous certificate has been filed for this corner location. Based on Chickasaw County Engineer's Reference ties we found a telephone pedestal and a power pole with "X" nails that had been used previously as tie markers. From these ties we found an "X" in the concrete paving 0.5' south of the centerline joint. County Engineer's Reference Ties show that a nail had been set in 1971. The road has been recently paved. Based on this we used the "X" as the best evidence of the location of the N 1/4 Corner of Section 30, Township 97 North, Range 13 West.

Plan-View



cor. A
 19-97-13

I hereby certify that this land surveying document was prepared and the related survey work was performed by me or under my direct personal supervision and that I am a duly licensed Land Surveyor under the laws of the State of Iowa.

Signature: [Signature]
 Lindsay Erdman, P.E. and P.L.S. Iowa License Number 11442

Date: 10/19/07

My license renewal date is December 31, 2008

Corner(s) to be indexed

Corner	Section	Township	Range
N 1/4	30	97	13