

Herold - Reicks Surveying, 25 1/2 East Main Street, Suite 204, New Hampton, IA 50659, Ph. 641-394-2725

### UNITED STATES PUBLIC LAND SURVEY CORNER CERTIFICATE

Land Survey Monuments situated in Section 19, Township 97 North, Range 13 West of the Fifth Principal Meridian, **Chickasaw** County, Iowa. Previously recorded in 1.) Bk. 154 , Pg.495, in the **Chickasaw** County Recorder's office, 2.) Not Recorded

This certificate is being prepared in compliance with Iowa Code Chapter 355.11 because:

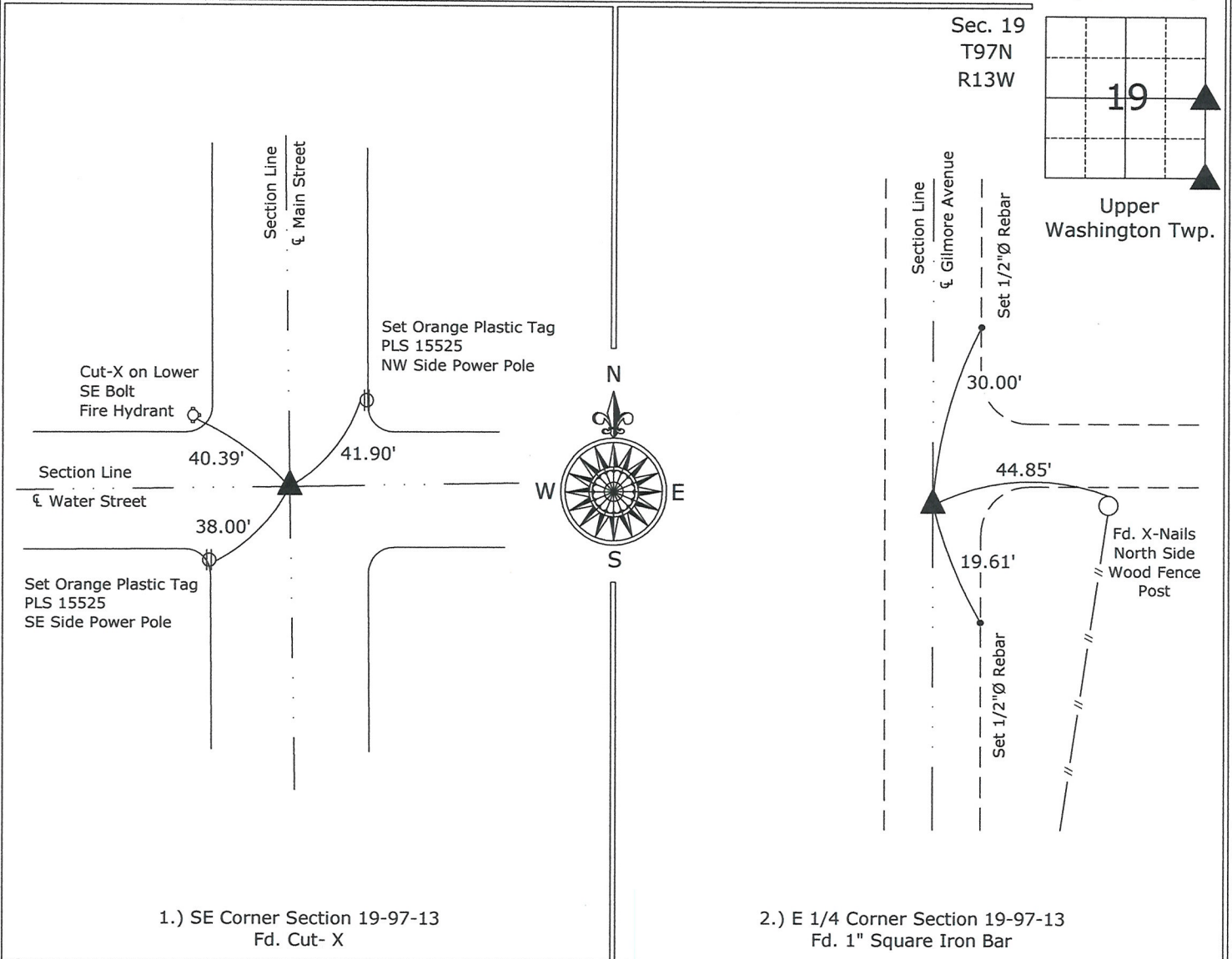
- 2.  There is no certificate on file for this corner.
- 1.  There are no longer three valid ties of record.
- 1.  There are changes to reference ties of record.
- There is change of monumentation of record.
- 1.  To clarify description of record monument (ties).

Monument Description and Remarks:

- 1.) SE Corner Section 19-97-13: Fd. Cut-X from information on the previous Section Corner Certificate and the information obtained from the County Engineers Office, in Field Book Upper Washington Corner Ties, Section 19, Corner "B", all of the previous ties are gone, established new ties.
- 2.) E 1/4 Corner Section 19-97-13: Fd. 1" Square Iron Bar from information obtained from the Chickasaw County Engineer's Office, in Field Book Upper Washington Corner Ties, Section 19, Corner "C".

#### PLAN - VIEW

(Show a minimum of three reference ties to durable physical objects, relevant monuments and physical conditions that will enable recovery of the corner.)



1.) SE Corner Section 19-97-13  
Fd. Cut- X

2.) E 1/4 Corner Section 19-97-13  
Fd. 1" Square Iron Bar



I hereby certify that this land surveying document was prepared and the related survey work was performed by me or under my direct personal supervision and that I am a duly licensed Land Surveyor under the laws of the State of Iowa.

*Paul R. Herold* 10-31-08  
Paul R. Herold Date:

License number 15525  
My license renewal date is December 31, 2008.  
Sheets covered by this seal: Individual sheet only

List Corners to be Indexed			
Corners	Section	Twp.	Range
SE	19	97	13
E 1/4	19	97	13

Project Number: 2008-127

FB: Alta Vista 1, Pg. 2

Corner B  
 Section 19-97-13  
 As referred to in  
 Engr Tie Book

UNITED STATES PUBLIC LAND SURVEY CORNER CERTIFICATE

OF 19

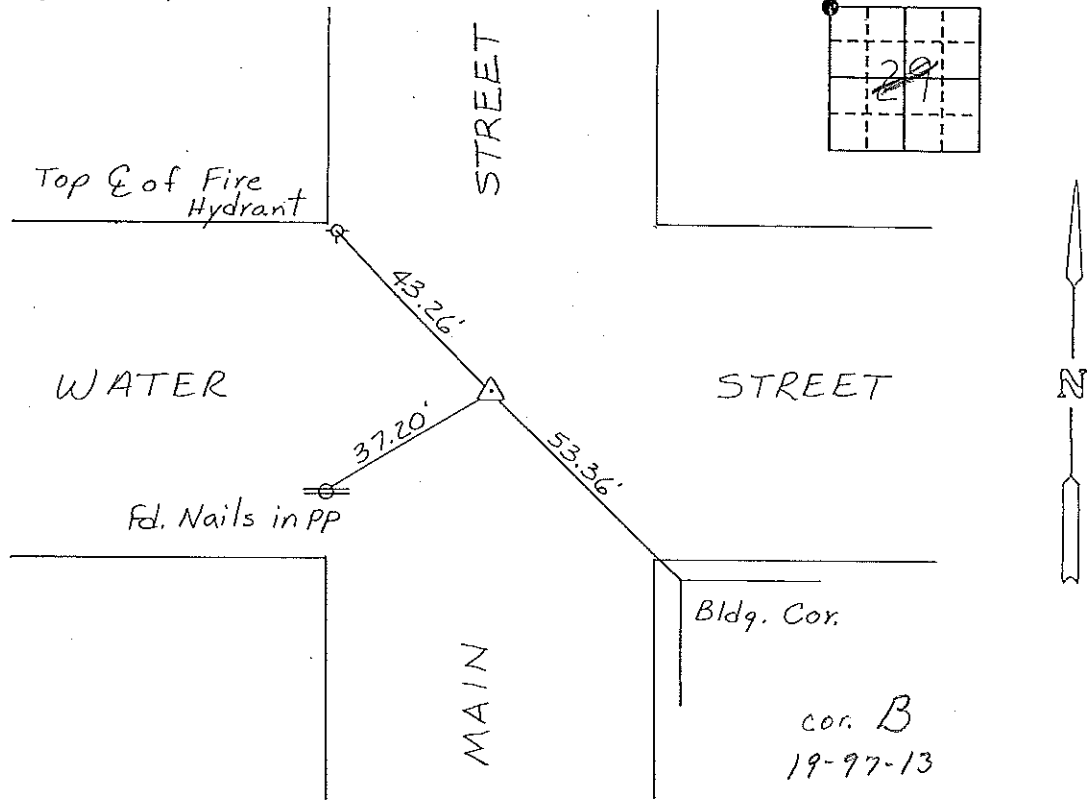
Land Survey Monuments situated in Section 29, Township 97 NORTH, Range 13 WEST, of the Fifth Principal Meridian, CHICKASAW County, Iowa. Previously recorded in Deeds Book 150, page 373 in County Recorder's Office.

(Show reason for preparing this certificate, the evidence and detailed procedures used in establishing the corner positions and monumentation found or placed.)

Monument Description and Remarks: NW CORNER, SECTION 29-T97N-R13W:  
Cut 'X' in Concrete from Ties - No Mon. found at Cor.

PLAN - VIEW

(Show a minimum of three reference ties to durable physical objects, relevant monuments and physical conditions that will enable recovery of the corner.)

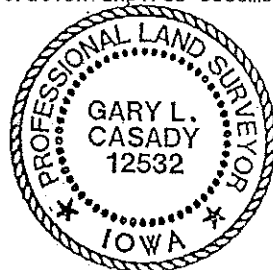


NW CORNER, SECTION 29-T97N-R13W

I hereby certify that the survey work was completed and this certificate was prepared by me or under my direct personal supervision and that I am a duly registered land surveyor under the laws of the state of Iowa.

Signature: Gary L. Casady  
 Name typed or printed: Gary L. Casady  
 Date: 4-26-94 Reg. No. 12532  
 My Registration Expires December 31, 1994

Comers	List Corners to be Indexed Section	Twsp	Range
NW	29	97N	13W
Corner B	#9-97-13		



SEAL

Placed in Tie Book  
 5/27/94  
 JFW