

Section 25-97-14  
 As referred to in  
 Engr. Fee Book

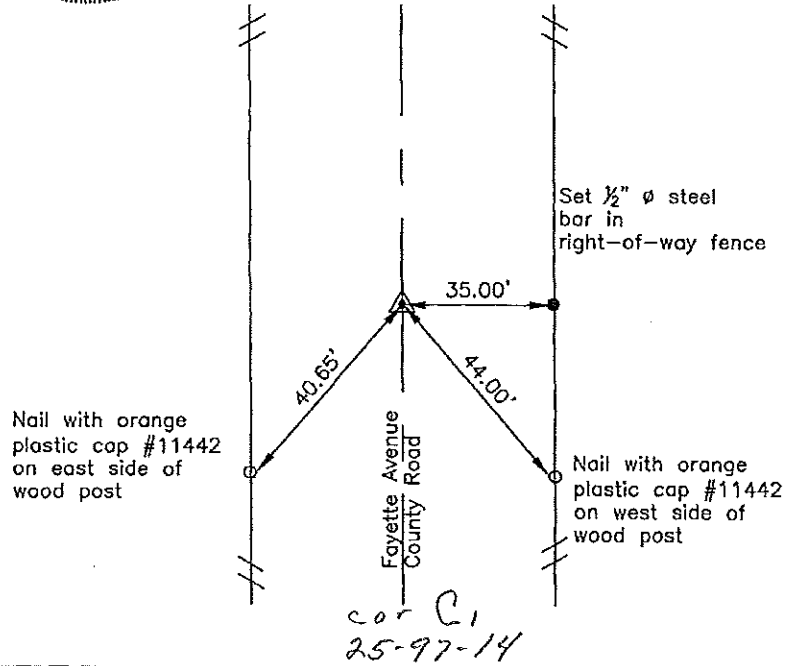
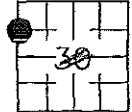
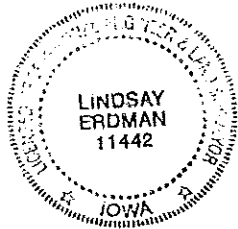
Prepared by: Erdman Engineering, P.C., 708 Commerce Drive, P.O. Box 246, Decaroh, Iowa 52101 (563) 382-4194

United States Public Land Survey Corner Certificate  
 of 25

Land Survey Monuments situated in Section 30, Township 97, Range 13 West of the 5th Principal Meridian in Chickasaw County, Iowa. Previously recorded in does not apply in the county Recorder's Office.

Monument Description and Remarks: This certificate is prepared in accordance with Section 193C of the Code of Iowa. No previous certificate has been filed for this corner location. We found no record of the WNW 1/8 Corner being set. We found no evidence of a monument in the field other than the centerline of the county road. We found the NW corner and the SW Corner. We set the W 1/4 Corner. Based on these monuments we set a 1/2" diameter steel bar with 1 1/2" aluminum cap #11442 on line and equidistant between the NW corner and the W 1/4 Corner as the WNW 1/8 Corner of Section 30, Township 97 North, Range 13 West.

Plan-View



I hereby certify that this land surveying document was prepared and the related survey work was performed by me or under my direct personal supervision and that I am a duly licensed Land Surveyor under the laws of the State of Iowa.

Signature: Lindsay Erdman  
 Lindsay Erdman, P.E. and P.L.S., Iowa License Number 11442

Date: 10/13/07

My license renewal date is December 31, 2008

Corner(s) to be Indexed

Corner	Section	Township	Range
WNW 1/8	30	97	13