

DOCUMENT No. 00999 FILED FOR RECORD THE 6th DAY OF STATE OF IOWA, CHICKASAW COUNTY,
 RECORDING FEE \$ 6.00 December, 19 95 AT 8:30
 TRANSFER FEE \$ --- O'CLOCK A.M. BOOK 159 Deed PAGE 296
 By: Leitha M. Ross Recorder
 LEITHA M. ROSS Deputy

*Section 31-97-13
 As referred to in
 Engr. Tie Book*

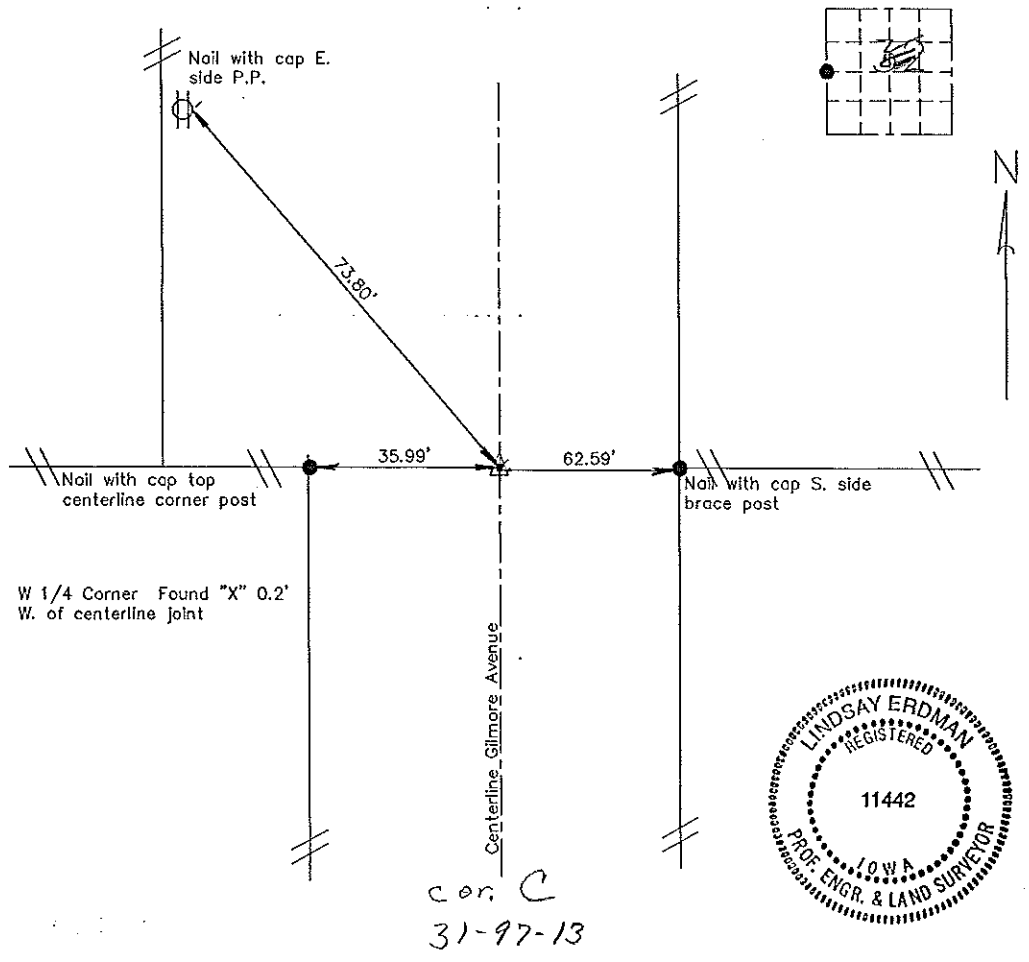
United States Public Land Survey Corner Certificate
 of

Land Survey Monuments situated in Section 31 Township 97N Range 13W of the Fifth Principle Meridian,
Chickasaw County, Iowa. Previously recorded in does not apply in County Recorders Office.

(Show reason for preparing this certificate, the evidence and detailed procedures used in establishing the corner positions and monumentation found or placed.)

Monument Description and Remarks: This certificate is prepared in accordance with Section 355.11 of the 1995 Code of Iowa. No previous certificate has been filed for this corner location. Based on recorded plot from 1990 in Book 146, page 194 at the Chickasaw County Recorder's office we found a cut "X" in paving described previously as the W 1/4 corner, Section 32-97-13.

Plan-View
 (Show a minimum of three reference ties to durable physical objects, relevant monuments and physical conditions that will enable recovery of the corner.)



I hereby certify that the survey work was completed and this certificate was prepared by me or under by direct supervision and that I am a duly registered land surveyor under the laws of the State of Iowa.

Signature Lindsay Erdman
 Lindsay Erdman, P.E. and L.S.
 Date: 12/5/95 Reg. No. 11442
 My license will be renewed January 1, 1997

List Corners to be Indexed
 Corners Section Twp. Range
 W 1/4 32 97 13

Cor C 31-97-13

Placed in tie book

DOCUMENT No. 01085 FILED FOR RECORD THE 2nd DAY OF December, 1991 AT 10:21 O'CLOCK A.M. BOOK 148 DEED PAGE 252
 RECORDING FEE \$ 5.00 BY Mary C. Murray MARY C. MURRAY
 TRANSFER FEE \$ _____

UNITED STATES PUBLIC LAND SURVEY CORNER CERTIFICATE

SLSI 9-90

OF

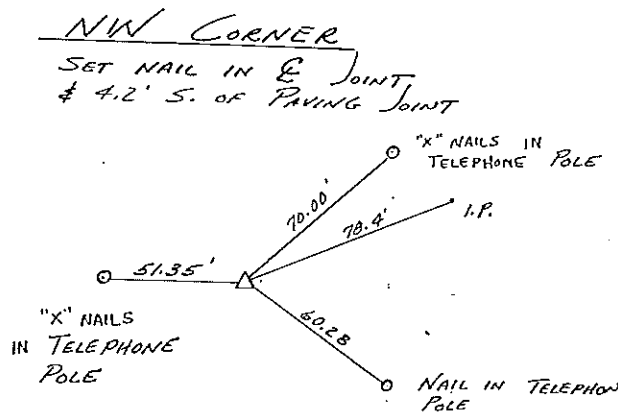
Land Survey Monuments situated in Section 30, Township 97, Range 13,
 of the Fifth Principal Meridian, CHICKASAW County, Iowa.
 Previously recorded in Does Not Apply in County Recorder's Office.

(Show reason for preparing this certificate, the evidence and detailed procedures used in establishing the corner positions and monumentation found or placed.)
 Monument Description and Remarks: _____

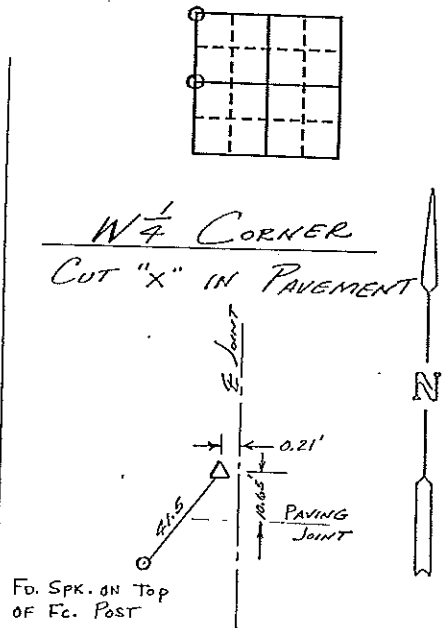
Section 30-97-13
 As referred to in
 Engr Tie Book

PLAN - VIEW

(Show a minimum of three reference ties to durable physical objects, relevant monuments and physical conditions that will enable recovery of the corner.)



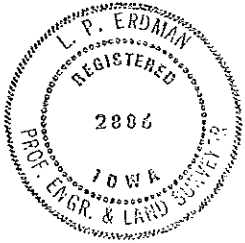
Cor B 30-97-13



Cor C of 31-97-13

I hereby certify that the survey work was completed and this certificate was prepared by me or under my direct personal supervision and that I am a duly registered land surveyor under the laws of the state of Iowa.

Signature: L.P. Erdman
 Name typed or printed: L.P. ERDMAN
 Date: 10-03-91 Reg. No. 2886



SEAL

Corners	List Corners to be Indexed Section	Twp	Range
NW	32	97	13
W 1/4	32	97	13

Placed in the Book 12/3/91