

Section 25-97-14
As returned to in
Engr. Tie Book

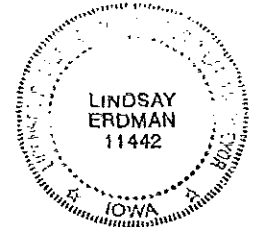
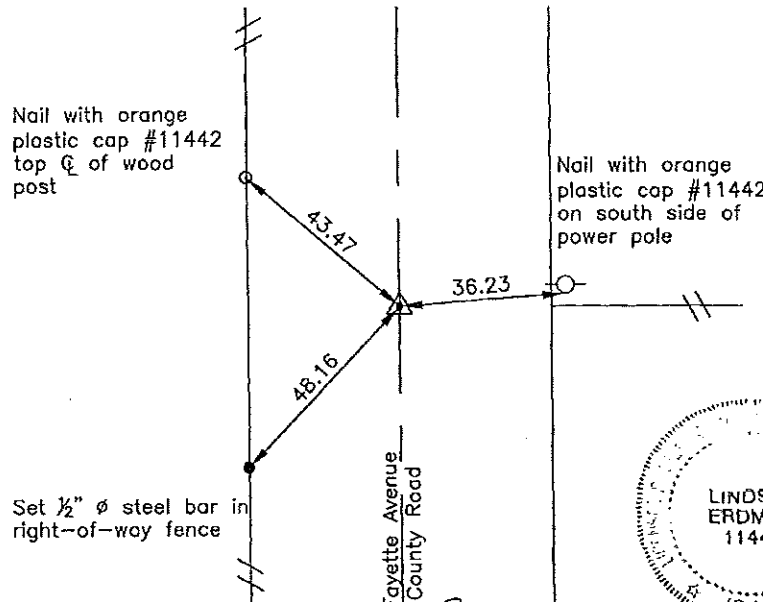
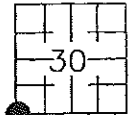
Prepared by: Erdman Engineering, P.C., 708 Commerce Drive, P.O. Box 246, Decorah, Iowa 52101 (563) 382-4194

United States Public Land Survey Corner Certificate

of ²⁵~~30~~
Land Survey Monuments situated in Section ~~30~~, Township 97, Range ~~13~~ West of the 5th Principal Meridian in Chickasaw County, Iowa. Previously recorded in does not apply in the county Recorder's Office.

Monument Description and Remarks: This certificate is prepared in accordance with Section 193C of the Code of Iowa. No previous certificate has been filed for this corner location. Chickasaw County Engineer's Reference Ties show that a stone had been set previously at the SE Corner of Section 25 of Dearfield Township. We made a search with a magnetic locator at the approximate centerline of the county road and in line with the fence line running east. We found a 5/8" diameter steel bar on the NW Corner of a 4" X 3" stone down ±6" below the crushed rock surface of the county road. We used the center of the stone as the best evidence of the location of the SW Corner of Section 30, Township 97 North, Range 13 West.

Plan-View



cor B
25-97-14

I hereby certify that this land surveying document was prepared and the related survey work was performed by me or under my direct personal supervision and that I am a duly licensed Land Surveyor under the laws of the State of Iowa.

Signature *Lindsay Erdman*
Lindsay Erdman, P.E. and P.L.S. Iowa License Number 11442

Date: 10/19/07

My license renewal date is December 31, 2008

Corner(s) to be Indexed

Corner	Section	Township	Range
SW	30	97	13