

Chickasaw Co. Recorder  
 Cindy Messersmith  
**Fee Book 2007-0786**  
 04/23/2007 @1000AM  
 SCC SEC COR CERT  
 Book: Page: # Pages: 1  
 Total Fees: \$7.00

Herold - Recks Surveying, 25 1/2 East Main Street, Suite 204, New Hampton, IA 50659, Ph. 641-394-2725

**UNITED STATES PUBLIC LAND SURVEY CORNER CERTIFICATE**

Land Survey Monuments situated in:  
 Section 31, Township 97 North, Range 13 West of the Fifth Principal Meridian,  
Chickasaw County, Iowa. Previously recorded in None  
 In County Recorder's Office. (book, page, document number, etc.)

(Show reason for preparing this certificate, the evidence and detailed procedures used in establishing the corner positions and monumentation found or placed.)

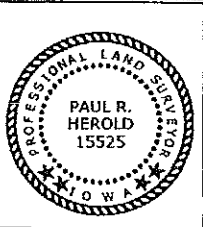
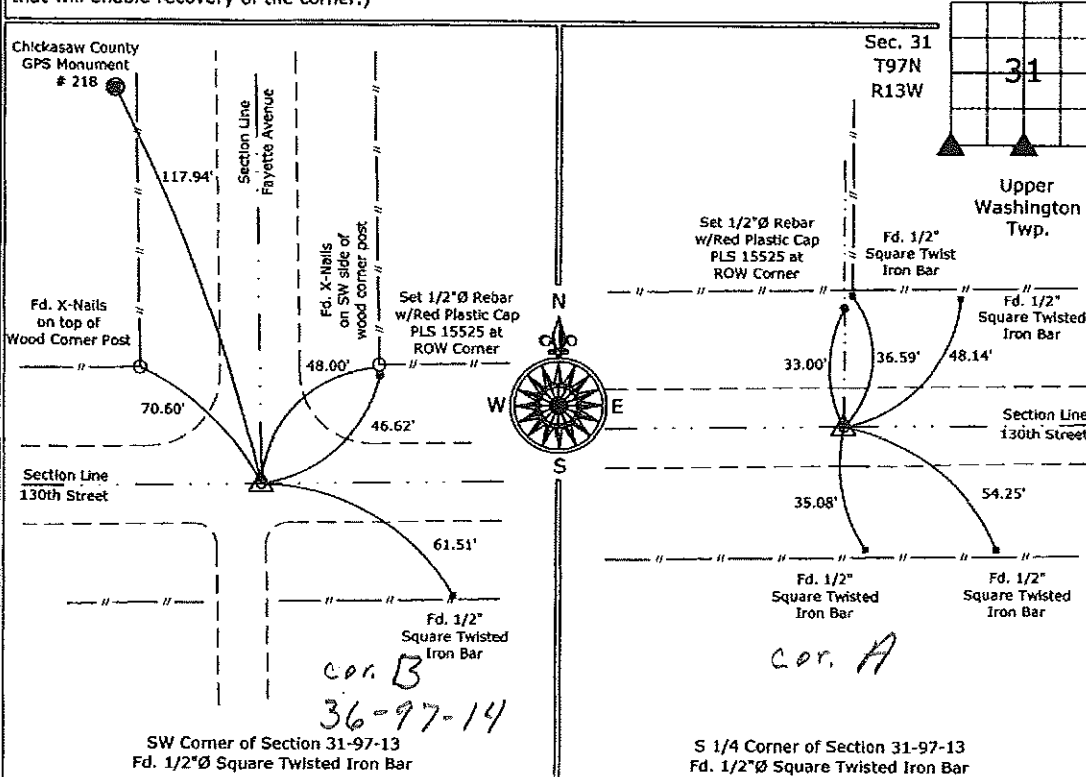
**Monument Description and Remarks:**

SW Corner of Section 31-97-13, Fd. 1/2"Ø Square Twisted Iron Bar from information obtained from the County Engineer's office, in Field Book Upper Deerfield Twp., Section 36, Corner "B"

S 1/4 Corner of Section 31-97-13, Fd. 1/2"Ø Square Twisted Iron Bar from information obtained from the County Engineer's office, in Field Book Upper Washington Twp., Section 31, Corner "A"

**PLAN - VIEW**

(Show a minimum of three reference ties to durable physical objects, relevant monuments and physical conditions that will enable recovery of the corner.)



I hereby certify that this land surveying document was prepared and the related surveying work was performed by me or under my direct personal supervision and that I am a duly licensed Land Surveyor under the laws of the State of Iowa.  
*Paul R. Herold* 4-20-07  
 Paul R. Herold Date:  
 License number 15525  
 My license renewal date is December 31, 2008.  
 Sheets covered by this seal: Sheet P1

List Corners to be Indexed			
Corners	Section	Twp.	Range
SW	31	97	13
S 1/4	31	97	13

Project Number: 2007-036  
 FB: Chickasaw County 1, Pgs. 11-12

File: S:\Projects\2007\2007-036\dwg\2007-036.dwg, 4/20/2007 3:21:46 PM