

Section 30-97-13  
 As referred to in  
 Engr. Tie Book

UNITED STATES PUBLIC LAND SURVEY CORNER CERTIFICATE

OF 30

Land Survey Monuments situated in Section 29, Township 97 North, Range 13 West, of the Fifth Principal Meridian, CHICKASAW County, Iowa. Previously recorded in NONE in County Recorder's Office.

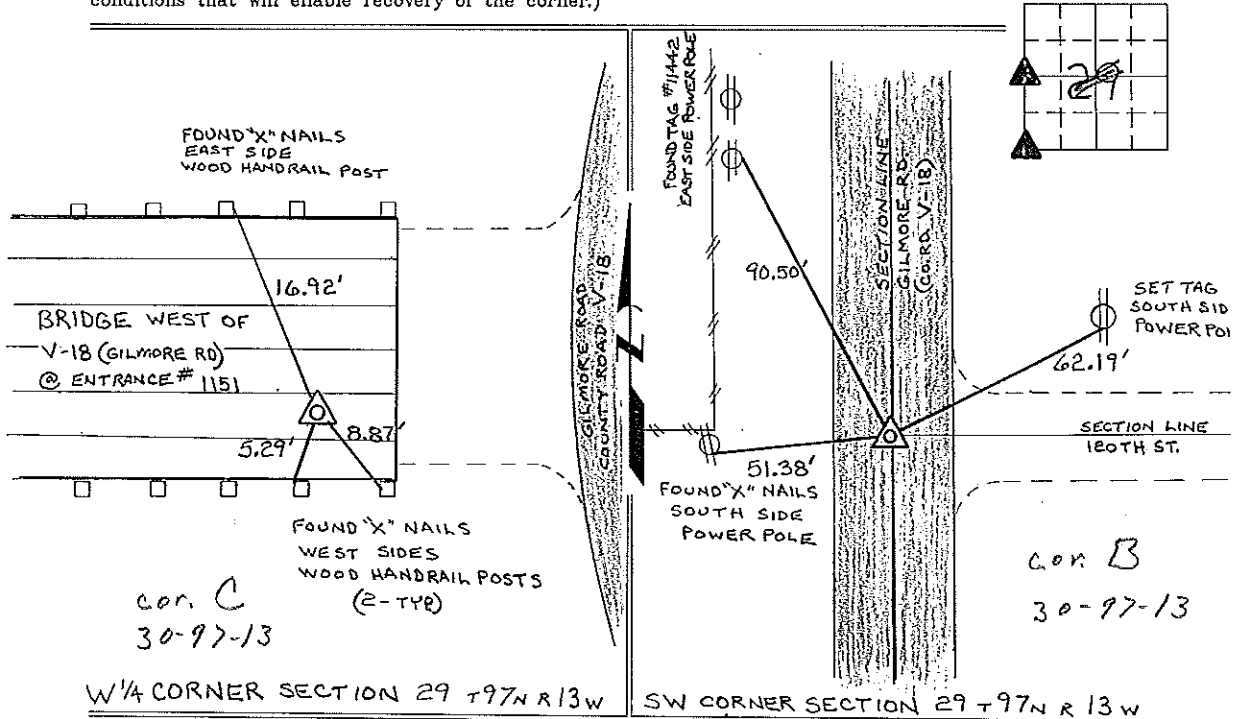
(book, page, document number, etc.)

(Show reason for preparing this certificate, the evidence and detailed procedures used in establishing the corner positions and monumentation found or placed.)

Monument Description and Remarks: W 1/4 CORNER SECTION 29 T97N R13W: SET PK NAIL AT RECORD POSITION, BASED ON A SURVEY AND PLAT MADE BY STEVEN L. BUSSE, RECORDED MAY 4, 1993, AND A SURVEY AND PLAT MADE BY L.P. ERDMAN, DATED NOVEMBER 5, 1992, RECORDED FEBRUARY 8, 1995, AFTER LOCKING INTO THE 2 SURVEYS IT WAS OBVIOUS THEY BOTH USED THE SAME CORNER, HOWEVER NEITHER SURVEYOR FILED A SECTION CORNER CERTIFICATE.  
SW CORNER SECTION 29 T97N R13W: FOUND CEMENT NAIL AS SHOWN ON A SURVEY AND PLAT MADE BY L.P. ERDMAN, RECORDED FEBRUARY 8, 1995, NO PREVIOUS SECTION CORNER CERTIFICATE ON FILE.

PLAN - VIEW

(Show a minimum of three reference ties to durable physical objects, relevant monuments and physical conditions that will enable recovery of the corner.)



I hereby certify that the survey work was completed and this certificate was prepared by me or under my direct personal supervision and that I am a duly registered land surveyor under the laws of the state of Iowa.

Signature Lyle G. TeKippe  
 Lyle G. TeKippe  
 Date: 11-18-96 Reg. No. 7060  
 My Registration Renewal Date is December 31, 1996

Seal



List Corners to be Indexed			
Corners	Section	Twp.	Range
W 1/4	29	97N	13W
Cor C 30-97-13			
SW	29	97N	13W
Cor B-30-97-13			

*Placed in tie Book  
 12/13/96*

Section 30-97-13  
 As referred to in  
 Twp. Trc Book

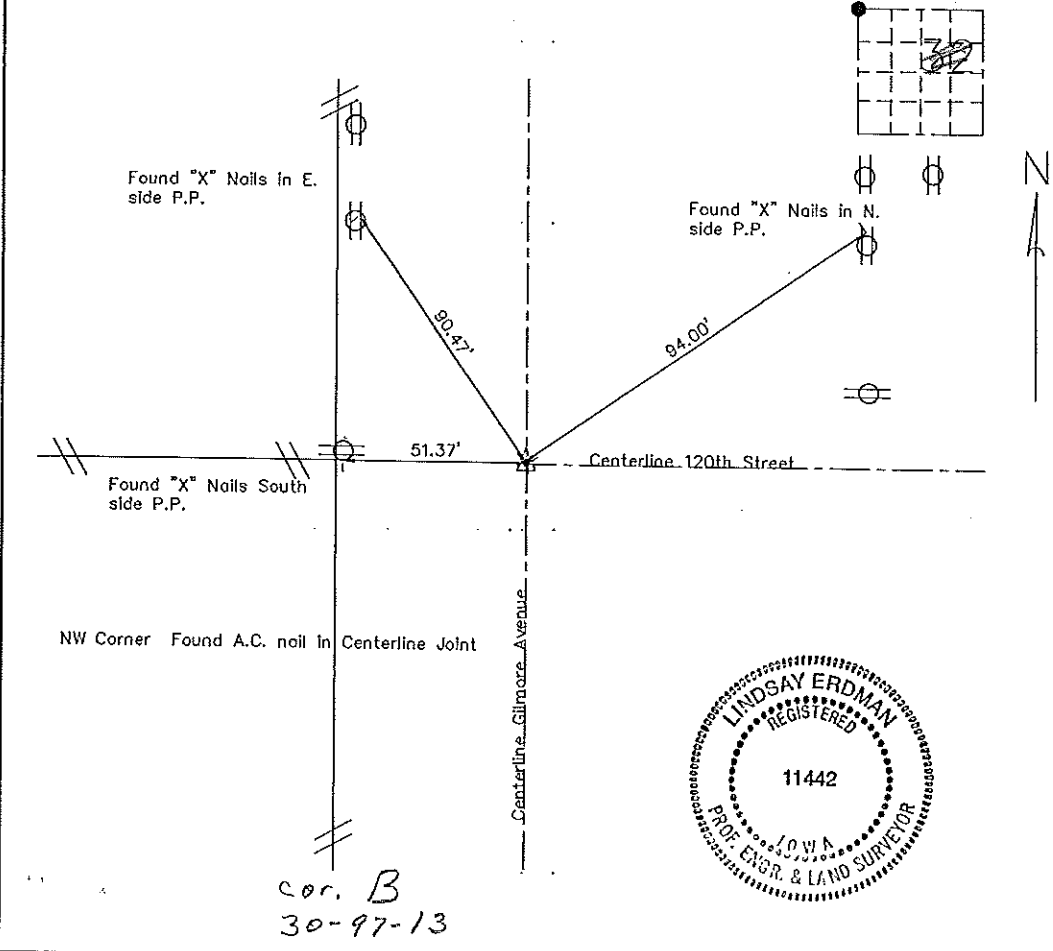
United States Public Land Survey Corner Certificate  
 30 of

Land Survey Monuments situated in Section 32 Township 97N Range 13W of the Fifth Principle Meridian, Chickasaw County, Iowa. Previously recorded in does not apply in County Recorders Office.

(Show reason for preparing this certificate, the evidence and detailed procedures used in establishing the corner positions and monumentation found or placed.)

Monument Description and Remarks: This certificate is prepared in accordance with Section 355.11 of the 1995 Code of Iowa. No previous certificate has been filed for this corner location. Based on recorded plat from 1990 in Book 146, page 194 at the Chickasaw County Recorder's office we found an A.C. nail in the centerline paving joint described previously as the NW corner of Section 32-97-13. The A.C. nail location was verified by overall distance to the W 1/4 corner measured as 2810.89' (2810.89' rec.)

Plan-View  
 (Show a minimum of three reference ties to durable physical objects, relevant monuments and physical conditions that will enable recovery of the corner.)



I hereby certify that the survey work was completed and this certificate was prepared by me or under by direct supervision and that I am a duly registered land surveyor under the laws of the State of Iowa.

Signature *Lindsay Erdman*  
 Lindsay Erdman, P.E. and L.S.  
 Date: 12/5/95 Reg. No. 11442  
 My license will be renewed January 1, 1997

Corners	Section	Twp.	Range
NW Corner	32	97	13

Cor B - 30-97-13  
 Placed in the Book

DOCUMENT No. 01085 FILED FOR RECORD THE 2nd DAY OF December, 1991 AT 10:21 O'CLOCK A.M. BOOK 148 DEED PAGE 252  
 RECORDING FEE \$ 5.00 BY Mary C. Murray MARY C. MURRAY  
 TRANSFER FEE \$ \_\_\_\_\_

UNITED STATES PUBLIC LAND SURVEY CORNER CERTIFICATE

SLSI 9-90

OF

Land Survey Monuments situated in Section 30, Township 97, Range 13,  
 of the Fifth Principal Meridian, CHICKASAW County, Iowa.  
 Previously recorded in Does Not Apply in County Recorder's Office.

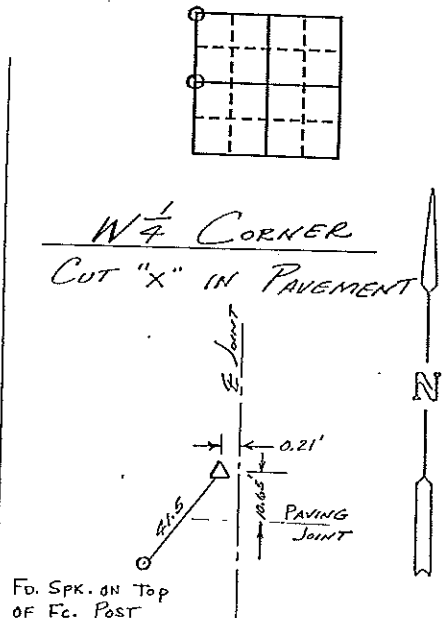
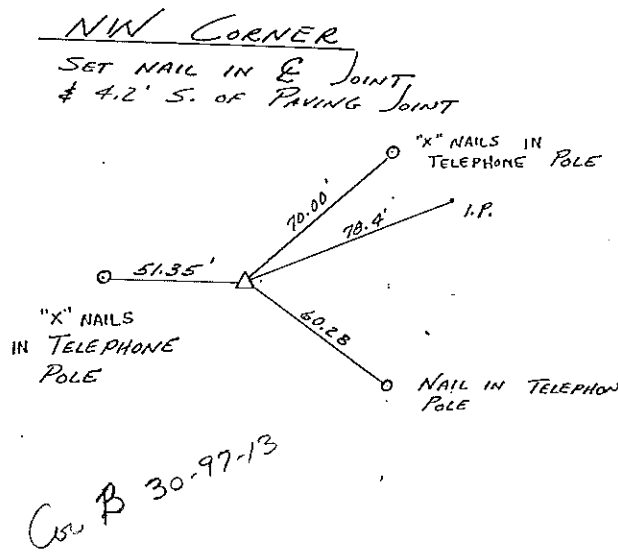
(Show reason for preparing this certificate, the evidence and detailed procedures used in establishing the corner positions and monumentation found or placed.)

Monument Description and Remarks:

Section 30-97-13  
 As referred to in  
 Engr Tie Book

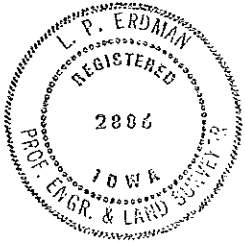
PLAN - VIEW

(Show a minimum of three reference ties to durable physical objects, relevant monuments and physical conditions that will enable recovery of the corner.)



I hereby certify that the survey work was completed and this certificate was prepared by me or under my direct personal supervision and that I am a duly registered land surveyor under the laws of the state of Iowa.

Signature: L.P. Erdman  
 Name typed or printed: L.P. ERDMAN  
 Date: 10-03-91 Reg. No. 2886



SEAL

Corners	List Corners to be Indexed Section	Twp	Range
NW	32	97	13
W 1/4	32	97	13

Placed in the Book 12/3/91