

Herold - Reicks Surveying, 10 East Main Street, New Hampton, IA 50659, Ph. 641-394-2725, Fax. 641-394-2718

UNITED STATES PUBLIC LAND SURVEY CORNER CERTIFICATE

Land Survey Monuments situated in Section 32, Township 97 North, Range 13 West of the Fifth Principal Meridian, Chickasaw County, Iowa. 1.) & 2.) Not previously recorded in the County Recorder's office.

This certificate is being prepared in compliance with Iowa Code Chapter 355.11 because:



- 1.) & 2.) There are no certificates on file for these corners.
- There are no longer three valid ties of record.
- There are changes to reference ties of record.
- There is change of monumentation of record.
- To clarify description of record monument (ties).

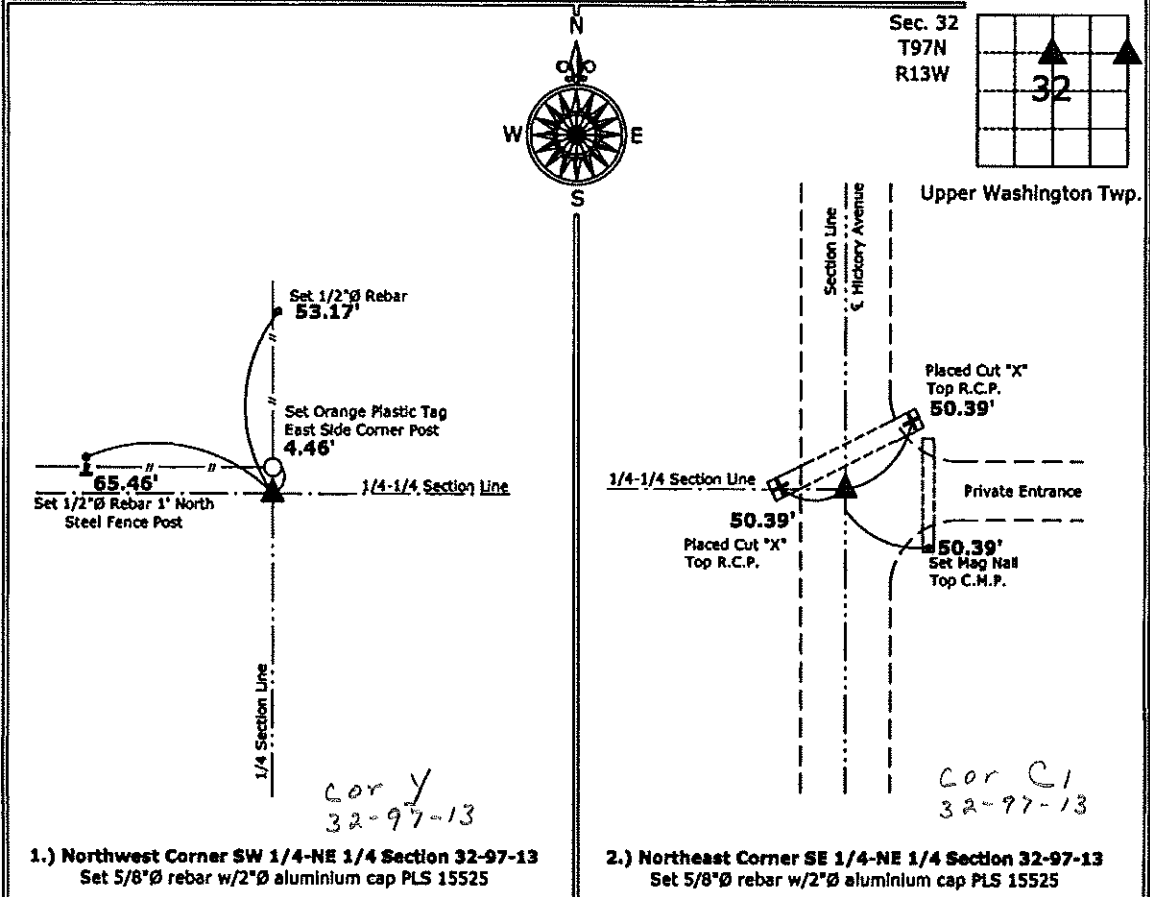
Monument Description and Remarks:

1.) Northwest Corner SW 1/4-NE 1/4: Set 5/8"Ø rebar with 2"Ø aluminium cap PLS 15525 equidistant and online between the North 1/4 Corner and the Center of Section.

2.) Northeast Corner SE 1/4-NE 1/4: Set 5/8"Ø rebar with 2"Ø aluminium cap PLS 15525 equidistant and online between the Northeast and the East 1/4 Corners of Section.

PLAN - VIEW

(Show a minimum of three reference ties to durable physical objects, relevant monuments and physical conditions that will enable recovery of the corner.)



I hereby certify that this land surveying document was prepared and the related survey work was performed by me or under my direct personal supervision and that I am a duly licensed Land Surveyor under the laws of the State of Iowa.

Paul R. Herold 11-9-10
 Paul R. Herold Date:
 License number 15525
 My license renewal date is December 31, 2010.
 Sheets covered by this seal: Individual sheet only

List Corners to be Indexed			
Corners	Section	Twp.	Range
NW-SW-NE	32	97	13
NE-SE-NE	32	97	13

Project Number: 2010-133
 FB: Chickasaw County 2, Pg. 48