

Herold - Reicks Surveying, 18 East Main Street, New Hampton, IA 50655, Ph. 641-394-2725, Fax. 641-394-2718

### UNITED STATES PUBLIC LAND SURVEY CORNER CERTIFICATE

Land Survey Monuments situated in Section 32, Township 97 North, Range 13 West of the Fifth Principal Meridian, Chickasaw County, Iowa. 1.) & 2.) Not previously recorded in the County Recorder's office.

This certificate is being prepared in compliance with Iowa Code Chapter 355.11 because:



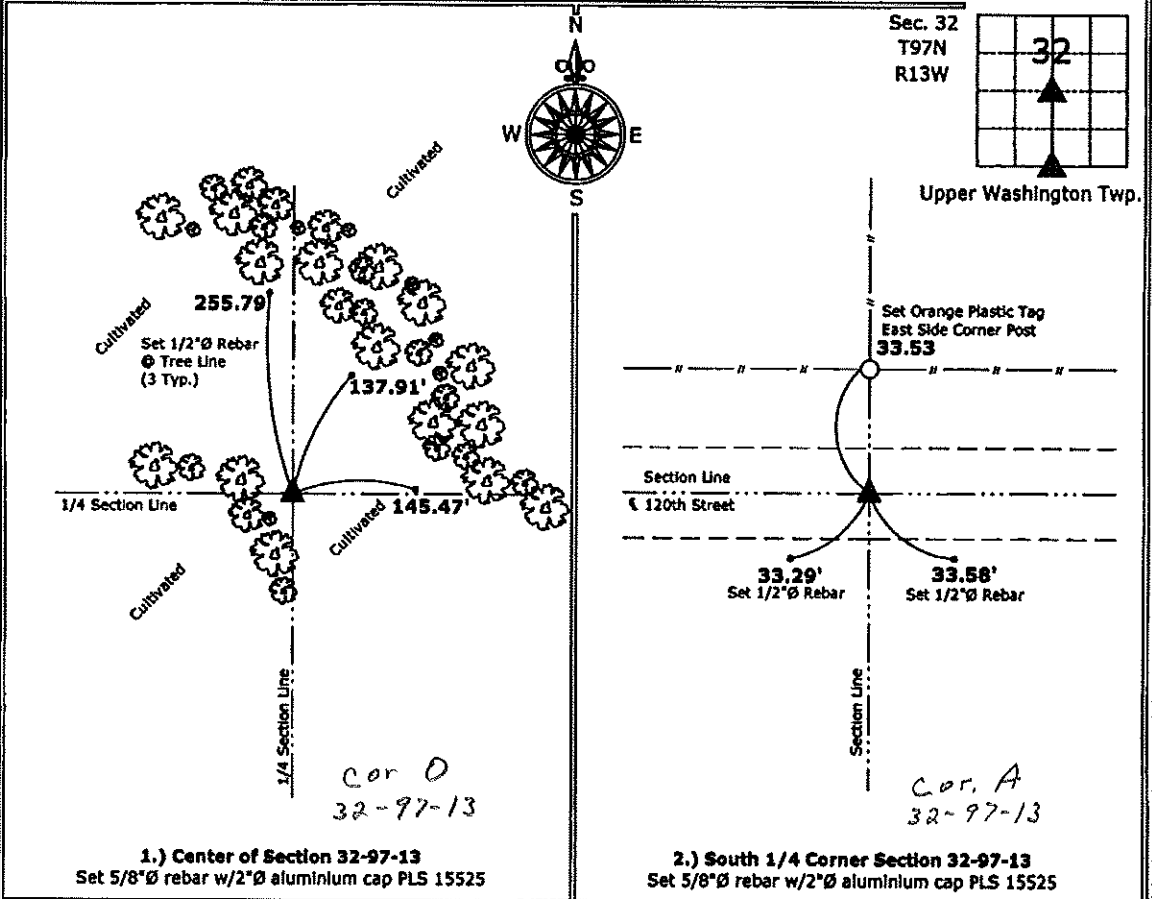
- 1.) & 2.)  There are no certificates on file for these corners.
- There are no longer three valid ties of record.
- There are changes to reference ties of record.
- There is change of monumentation of record.
- To clarify description of record monument (ties).

**Monument Description and Remarks:**

- 1.) **Center:** Set 5/8"Ø rebar with 2"Ø aluminium cap PLS 15525 at the intersection of the Quarter Section Lines.
- 2.) **South 1/4 Corner:** Set 5/8"Ø rebar with 2"Ø aluminium cap PLS 15525 at the center of the Right-of-Way of 120th Street on the line of possession fences after comparing the position to adjacent corners in the section.

#### PLAN - VIEW

(Show a minimum of three reference ties to durable physical objects, relevant monuments and physical conditions that will enable recovery of the corner.)



1.) **Center of Section 32-97-13**  
Set 5/8"Ø rebar w/2"Ø aluminium cap PLS 15525

2.) **South 1/4 Corner Section 32-97-13**  
Set 5/8"Ø rebar w/2"Ø aluminium cap PLS 15525



I hereby certify that this land surveying document was prepared and the related survey work was performed by me or under my direct personal supervision and that I am a duly licensed Land Surveyor under the laws of the State of Iowa.

*Paul R. Herold 11-9-10*  
Paul R. Herold Date:

License number 15525  
My license renewal date is December 31, 2010.  
Sheets covered by this seal: Individual sheet only

List Corners to be Indexed			
Corners	Section	Twp.	Range
CTR	32	97	13
S 1/4	32	97	13

Project Number: 2010-133  
FB: Chickasaw County 2, Pg. 48