

*Sec 29-97-13.  
 As referred to in  
 Engr. Tie Book*

*Herold - Reicks Surveying, 18 East Main Street, New Hampton, IA 50658, Ph. 641-394-2725, Fax. 641-394-2718*

**UNITED STATES PUBLIC LAND SURVEY CORNER CERTIFICATE**

Land Survey Monuments situated in Section <sup>29</sup>32, Township 97 North, Range 13 West of the Fifth Principal Meridian, Chickasaw County, Iowa. 1.) Previously recorded in Bk. 151, Pg. 182 in the County Recorder's office. 2.) Not Previously recorded in the County Recorder's office.

This certificate is being prepared in compliance with Iowa Code Chapter 355.11 because:

- 2.)  There is no certificate on file for this corner.
- 1.)  There are no longer three valid ties of record.
- There are changes to reference ties of record.
- 1.)  There is change of monumentation of record.
- To clarify description of record monument (ties).

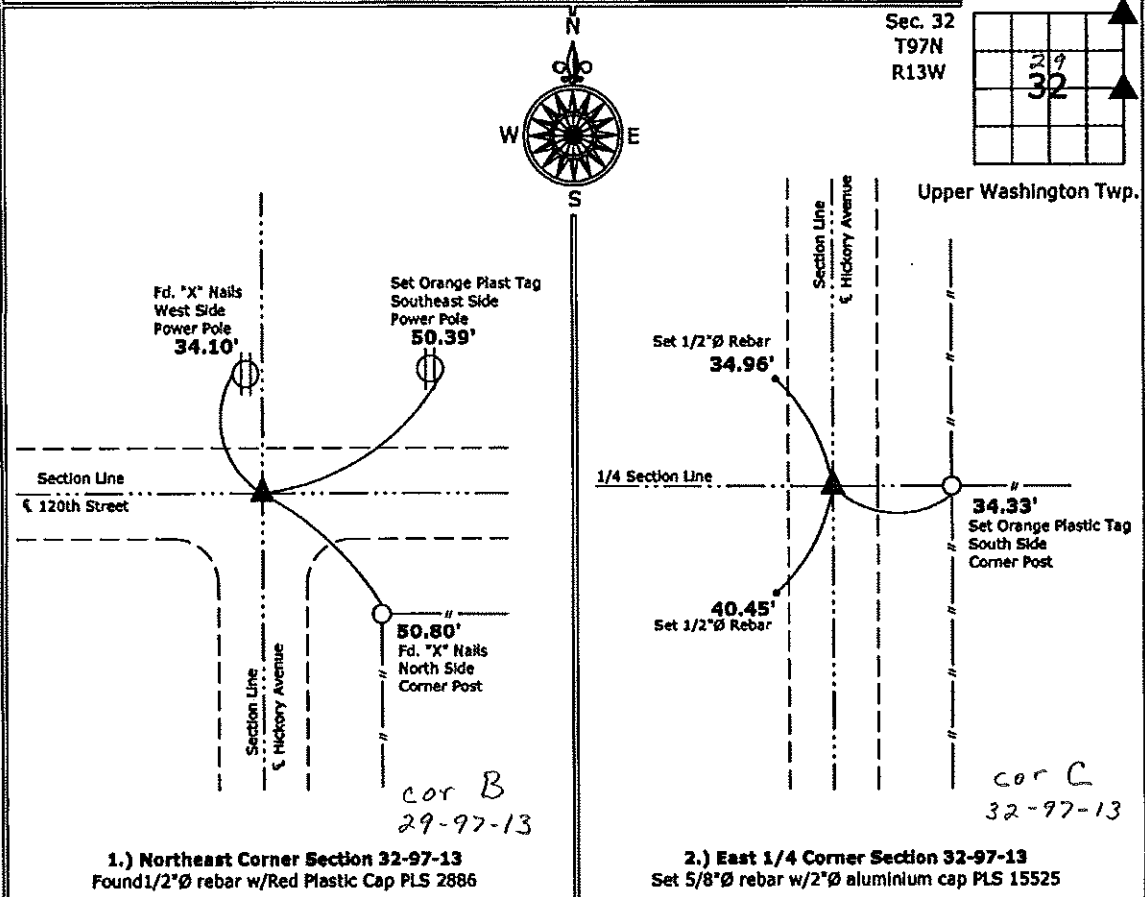
Monument Description and Remarks:

**1.) Northeast Corner:** Found 1/2"Ø rebar with Red Plastic Cap PLS 2886 with information obtained from previous Section Corner Certificate.

**2.) East 1/4 Corner:** Set 5/8"Ø rebar with 2"Ø aluminium cap PLS 15525 at the center of the Right-of-Way of Hickory Avenue on the line of possession fences after comparing the position to adjacent corners in the section.

**PLAN - VIEW**

(Show a minimum of three reference ties to durable physical objects, relevant monuments and physical conditions that will enable recovery of the corner.)



**1.) Northeast Corner Section 32-97-13**  
 Found 1/2"Ø rebar w/Red Plastic Cap PLS 2886

**2.) East 1/4 Corner Section 32-97-13**  
 Set 5/8"Ø rebar w/2"Ø aluminium cap PLS 15525



I hereby certify that this land surveying document was prepared and the related survey work was performed by me or under my direct personal supervision and that I am a duly licensed Land Surveyor under the laws of the State of Iowa.

*Paul R. Herold 11-9-10*  
 Paul R. Herold Date:

License number 15525  
 My license renewal date is December 31, 2010.  
 Sheets covered by this seal: Individual sheet only

List Corners to be Indexed			
Corners	Section	Twp.	Range
NE	32	97	13
E 1/4	32	97	13

Project Number: 2010-133  
 FB: Chickasaw County 2, Pg. 48