

FILED 2 3 3024  
 RECORDER'S OFFICE  
 CHICKASAW COUNTY, IOWA  
*fee \$1100*  
 2003 SEP 25 AM 9 35

CINDY MESSERSMITH  
 COUNTY RECORDER

Prepared by: Erdman Engineering, P.C., 708 Commerce Drive, P.O. Box 246, Decorah, Iowa 52101 (563) 382-4194

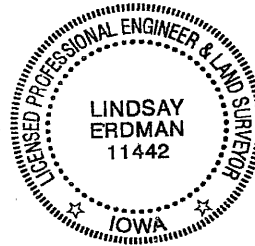
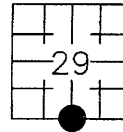
United States Public Land Survey Corner Certificate  
 of

Land Survey Monuments situated in Section 29, Township 97, Range 13 West of the 5th Principal Meridian in Chickasaw County, Iowa. Previously recorded in does not apply in the county Recorder's Office.

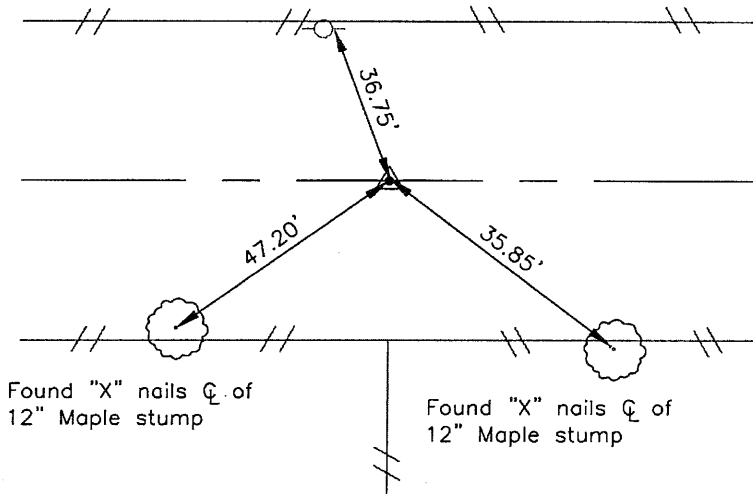
Monument Description and Remarks: This certificate is prepared in accordance with Section 193C of the Code of Iowa. No previous certificate has been filed for this corner location. We found no record of the S 1/4 corner being set. We found a 60d steel spike at the approximate centerline of the county road that is in line with the fence line running south. We found the SW Corner and the SE Corner of Section 29. The measured distance from the SE Corner to the spike is 2627.81'. The measured distance from the SW corner to the spike is 2627.85'. We used the spike as the best evidence of the location for the S 1/4 Corner of Section 29, Township 97 North, Range 13 West. We replaced the spike with a 3/4" diameter steel bar with 2" aluminum cap #11442.

Plan-View

NOTE: We found no record of the "X" nails being set.



Found "X" nails on east side of power pole



Found "X" nails C. of 12" Maple stump

Found "X" nails C. of 12" Maple stump

I hereby certify that the survey work was completed and this certificate was prepared by me or under my direct supervision and that I am a duly registered land surveyor under the laws of the State of Iowa.

Signature: *Lindsay Erdman*  
 Lindsay Erdman, P.E. and P.L.S.

Date: 9/22/03 Reg. No. 11442

My license renewal date is December 31, 2004

Corner(s) to be Indexed

Corner	Section	Township	Range
S 1/4	29	97	13