

Instrument #: 2020-2721
 11/24/2020 03:53:57 PM - Total Pages: 1
 SCC SECTION CORNER CERTIFICATES
 Recording Fee: \$ 7.00
 Shirley Troyna, Recorder, Chickasaw County Iowa



Prepared by & Return to: Herold - Reicks Surveying, 10 East Main Street, New Hampton, IA 50659, Ph. 641-394-2725

United States Public Land Survey Corner Certificate

Land Survey Monument situated in
 Section 33, Township 97 North, Range 13 West of the Fifth Principal Meridian, Chickasaw County, Iowa.
 On file in **Book 151, Page 182** in the County Recorder's office.

This certificate is being prepared in compliance with Iowa Code Chapter 355.11 because:

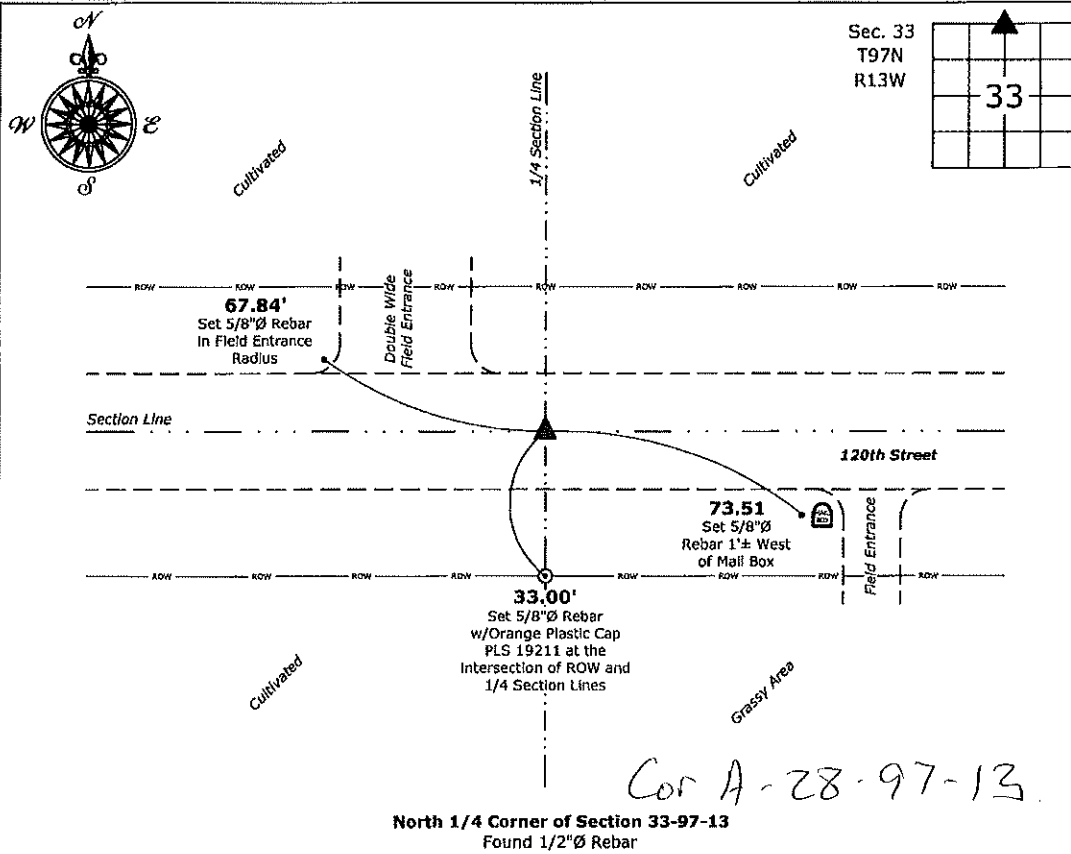
- There is no certificate on file for this corner.
- There are no longer three valid ties of record.
- There are changes to reference ties of record.
- There is change of monumentation of record.
- To clarify description of record monument (ties).

Monument Description and Remarks:

North 1/4 Corner: Found 1/2"Ø Rebar with information obtained from the previously recorded Section Corner Certificate.

Plan View

(Show a minimum of three reference ties to durable physical objects, relevant monuments and physical conditions that will enable recovery of the corner.)



North 1/4 Corner of Section 33-97-13
 Found 1/2"Ø Rebar



I hereby certify that this land surveying document was prepared and the related survey work was performed by me or under my direct personal supervision and that I am a duly licensed Land Surveyor under the laws of the State of Iowa.
Kirk D. Reicks 11-24-2020
 Kirk D. Reicks Date:
 License number 19211
 My license renewal date is December 31, 2020.
 Sheets covered by this seal: Individual sheet only

List Corner to be Indexed			
Corner	Section	Twp.	Range
N 1/4	33	97	13
Project Number: 2020-132			
FB: Chickasaw 10, Pgs. 42-43			

File: S:_Projects - NHO\County Control Systems - NHO\CHICKASAW\CHICK-3 (Alta Vista)\CHICK-3 - 2020.dwg, 11/24/2020 1:10:26 PM

UNITED STATES PUBLIC LAND SURVEY CORNER CERTIFICATE

SLSI 9-90

OF 20
 Land Survey Monuments situated in Section 28, Township 97, Range 13,
 of the Fifth Principal Meridian, CHICKASAW County, Iowa.
 Previously recorded in NONE in County Recorder's Office.
(book, page, document number, etc.)

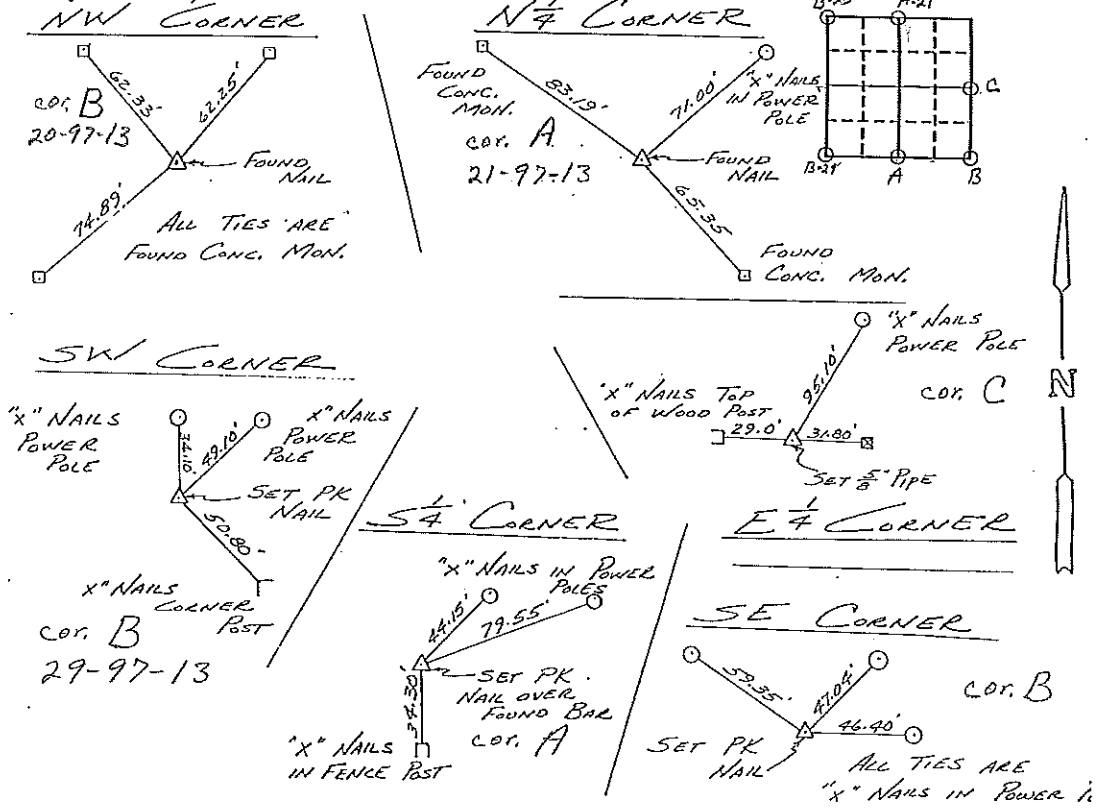
(Show reason for preparing this certificate, the evidence and detailed procedures used in establishing the corner positions and monumentation found or placed.)

Monument Description and Remarks: SEE SKETCH

Section 20-97-13
 As referred to in
 Engr. Tie Book.

PLAN - VIEW

(Show a minimum of three reference ties to durable physical objects, relevant monuments and physical conditions that will enable recovery of the corner.)



I hereby certify that the survey work was completed and this certificate was prepared by me or under my direct personal supervision and that I am a duly registered land surveyor under the laws of the state of Iowa.

Signature: L. P. Erdman
 Name typed or printed: L. P. ERDMAN
 Date: 2-15-93 Reg. No. 2886

Corners	List Corners to be Indexed		
	Section	Twp	Range
✓ NW	28	97	13 B-1
✓ N 1/4	28	97	13 A-2
✓ SW	28	97	13 C-1
✓ S 1/4	28	97	13 A-1
✓ SE	28	97	13 B-2
✓ E 1/4	28	97	13 C-1

SEAL

Placed in the B's
 2/22/93