

Instrument #: 2022-1901
 10/14/2022 03:34:21 PM Total Pages: 2
 SCC SECTION CORNER CERTIFICATES
 Recording Fee: \$ 12.00
 Shirley Troyna, Recorder, Chickasaw County Iowa



Prepared by: Kyle A. Johnson Address: 1900 MEDICAL ARTS AVE S, SUITE 100 SARTELL, MN Phone: 1-888-937-5150

UNITED STATES PUBLIC LAND SURVEY CORNER CERTIFICATE FOR

Land survey monuments situated in Section 34, Township 97 NORTH
 Range 13 WEST, of the Fifth Principal Meridian, CHICKASAW County, Iowa.
 Previously Recorded in _____ in County Recorder's Office.

(Show reason for preparing this certificate, the evidence and detailed procedures used in establishing the corner positions and monumentation found or placed.)

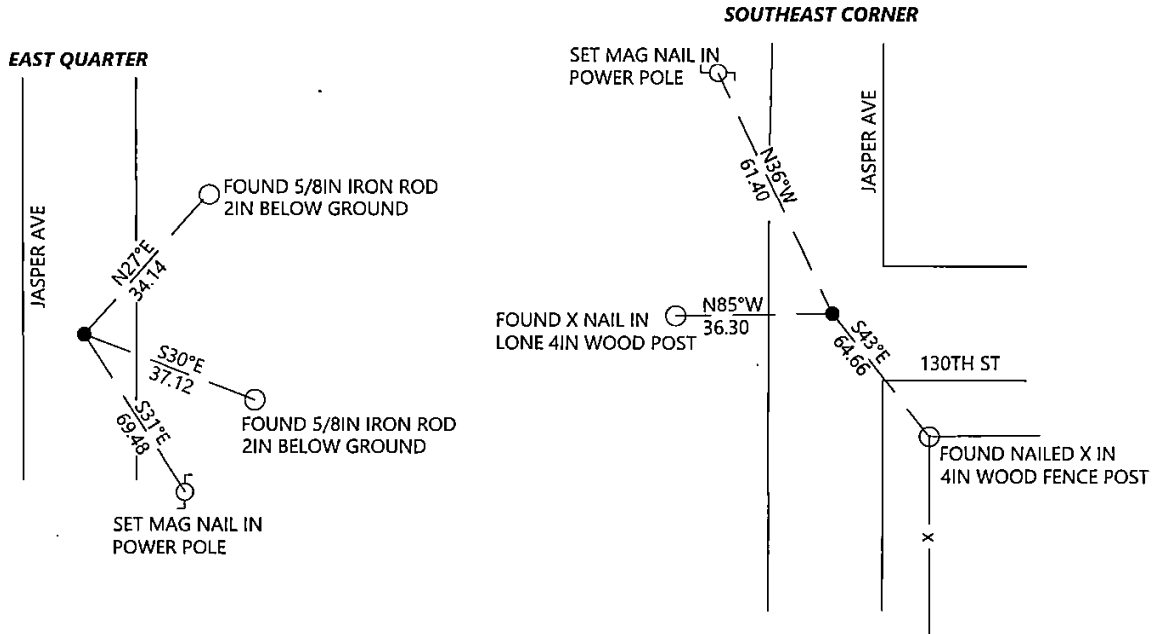
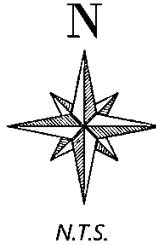
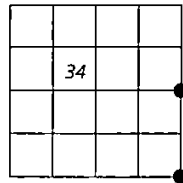
MONUMENT DESCRIPTION AND REMARKS:

EAST QUARTER: Westwood Professional Services found a 5/8" rebar with illegible aluminum cap and 2 ties per 2015 record. Accepting corner location and set 1 tie. Filing corner record as there are no longer 3 valid ties of reference.

SOUTHEAST CORNER: Westwood Professional Services found a 3/4" 0.8' deep and 2 ties per 1993 corner record and engineers tie book and set 1 tie. Accepting corner location. Filing corner record as there are no longer three valid ties of record.

PLAN - VIEW

(Show a minimum of three reference ties to durable physical objects, relevant monuments and physical conditions that will enable recovery of the corner.)



I hereby certify that this land surveying document was prepared and the related survey work was performed by me or under my direct personal supervision and that I am a duly licensed Land Surveyor under the laws of the state of Iowa.

Signature: Kyle Johnson Date: 10/4/2022
 Typed/Printed Name: Kyle A. Johnson
 License Number: 25725
 My license renewal date is December 31, 2022
 Pages or sheets covered by this seal: THIS SHEET

Corners to be Indexed

Corners	Section	Twp.	Range
EQ	34	97	13
SE	34	97	13

Prepared by: Kyle A. Johnson Address: 1900 MEDICAL ARTS AVE S, SUITE 100 SARTELL, MN Phone: 1-888-937-5150

UNITED STATES PUBLIC LAND SURVEY CORNER CERTIFICATE FOR

Land survey monuments situated in Section 34, Township 97 NORTH
 Range 13 WEST, of the Fifth Principal Meridian, CHICKASAW County, Iowa.
 Previously Recorded in _____ in County Recorder's Office.

(Show reason for preparing this certificate, the evidence and detailed procedures used in establishing the corner positions and monumentation found or placed.)

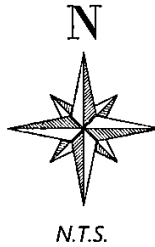
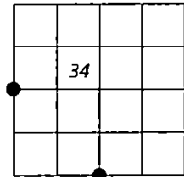
MONUMENT DESCRIPTION AND REMARKS:

WEST QUARTER: Westwood Professional Services searched area and did not recover a monument. Dug for stone referenced in the Chickasaw County Engineers records, without a recovery of the stone. Set a 1/2" rebar with orange LS 25725 cap on the section line angle per found monuments on the 2004 Lindsay Erdman survey, filed in 2004-1739 in Chickasaw County recorders office, and on line with fence line extension from the west. This position lands 4.6 ft. south of the mid point location. Filing due to no found monument.

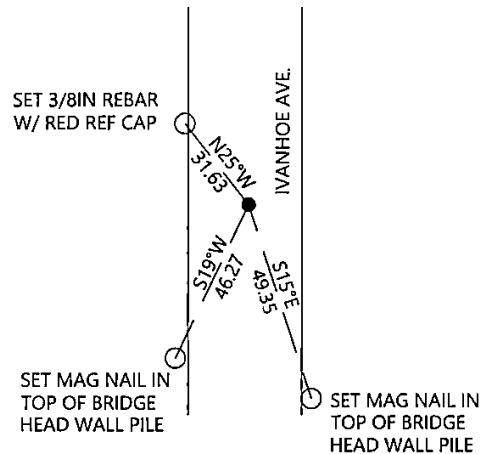
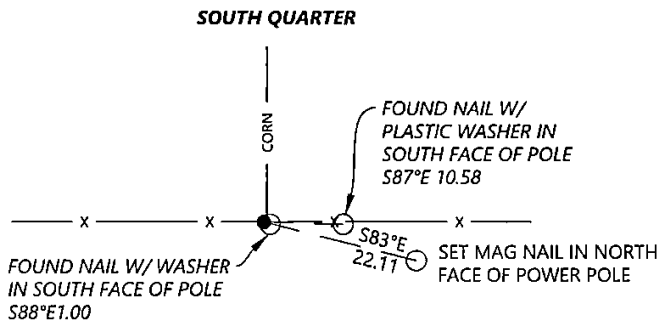
SOUTH QUARTER: Westwood Professional Services found a 5/8" rebar with 2" aluminum cap LS15525 and 2 ties per 2003 corner record. Accepting corner location and set 1 tie. Filing corner record as there are no longer 3 valid ties of record.

PLAN - VIEW

(Show a minimum of three reference ties to durable physical objects, relevant monuments and physical conditions that will enable recovery of the corner.)



WEST QUARTER



I hereby certify that this land surveying document was prepared and the related survey work was performed by me or under my direct personal supervision and that I am a duly licensed Land Surveyor under the laws of the state of Iowa.

Signature: Kyle Johnson Date: 10/14/2022
 Typed/Printed Name: Kyle A. Johnson
 License Number: 25725
 My license renewal date is December 31, 2022
 Pages or sheets covered by this seal: THIS SHEET

Corners to be Indexed

Corners	Section	Twp.	Range
WQ	34	97	13
SQ	34	97	13