

FILED 2004-0374

RECORDER'S OFFICE  
CHICKASAW COUNTY, IOWA

2004 FEB 20 <sup>fee 11.00</sup> PM 9 03

CINDY MESSERSMITH  
COUNTY RECORDER

Prepared by: Erdman Engineering, P.C., 708 Commerce Drive, P.O. Box 246, Decorah, Iowa 52101 (563) 382-4194

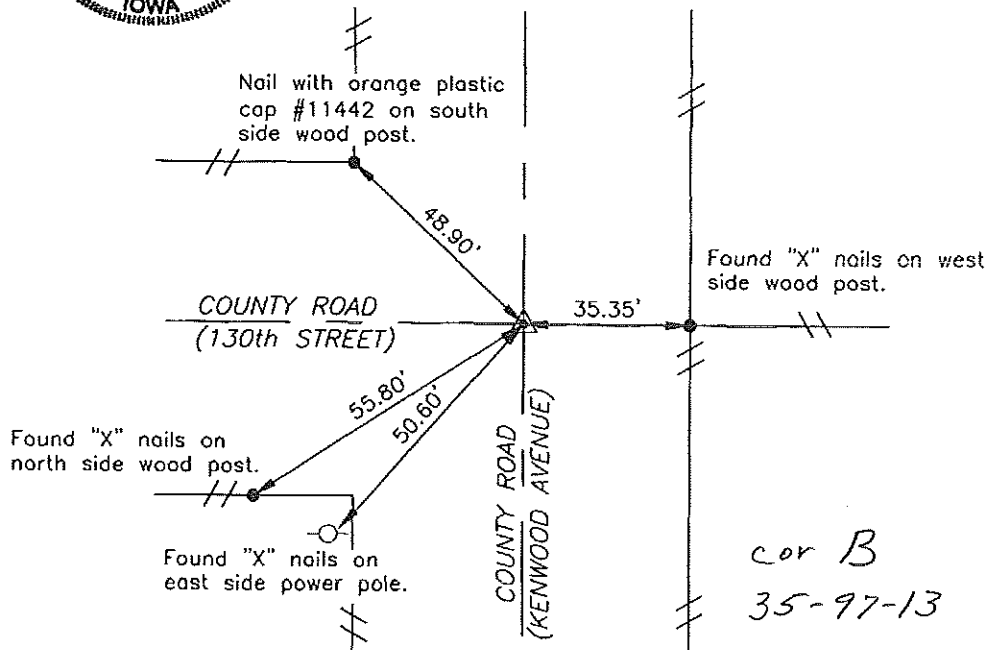
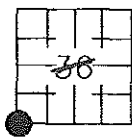
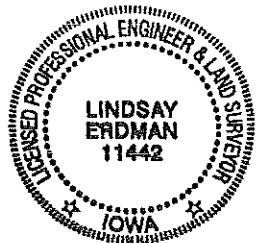
### United States Public Land Survey Corner Certificate

of  
Land Survey Monuments situated in Section 36, Township 97 North, Range 13 West of the 5th Principal Meridian in Chickasaw County, Iowa. Previously recorded in does not apply in the county Recorder's Office.

Monument Description and Remarks: This certificate is prepared in accordance with Section 193C of the Code of Iowa. No previous certificate has been filed for this corner location. Based on Reference Ties found in the Chickasaw County Engineer's Office, we found and accepted a 1" twisted steel bar as the SW Corner of Section 36, Township 97 North, Range 13 West.

*Section 35-97-13  
As referred to in  
Engr. Tie Book*

### Plan-View



I hereby certify that the survey work was completed and this certificate was prepared by me or under my direct supervision and that I am a duly registered land surveyor under the laws of the State of Iowa.

Signature: *Lindsay Erdman*  
Lindsay Erdman, P.E. and P.L.S.  
Date: *4/2/04* Reg. No. 11442

My license renewal date is December 31, 2004

### Corner(s) to be Indexed

Corner	Section	Township	Range
SW	36	97N	13W